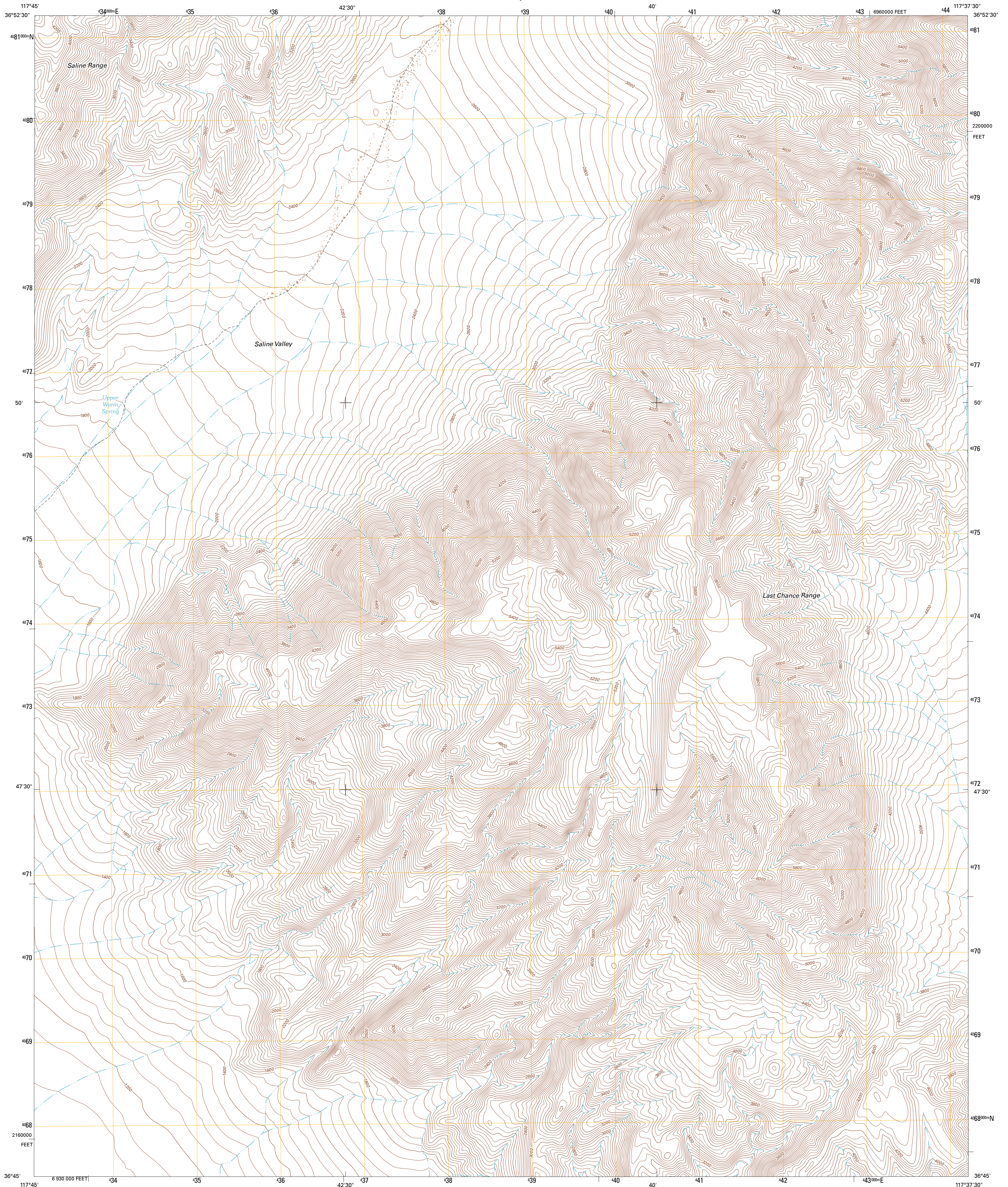




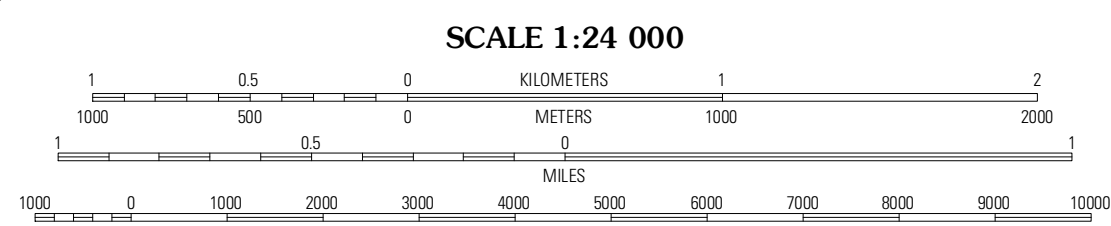
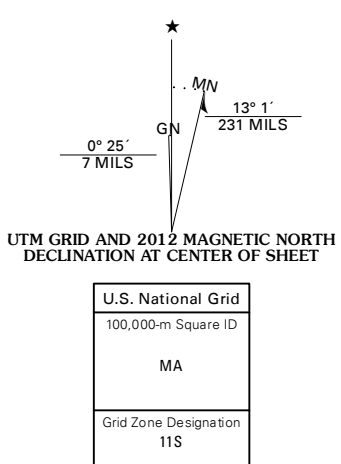
U.S. DEPARTMENT OF THE INTERIOR
U. S. GEOLOGICAL SURVEY



WEST OF TEAKETTLE JUNCTION QUADRANGLE
CALIFORNIA-INYO CO.
7.5-MINUTE SERIES



Produced by the United States Geological Survey
North American Datum of 1983 (NAD83)
World Geodetic System of 1984 (WGS84). Projection and
1 000-meter grid: Universal Transverse Mercator, Zone 11S
10 000-foot ticks: California Coordinate System of 1983
(zone 4)



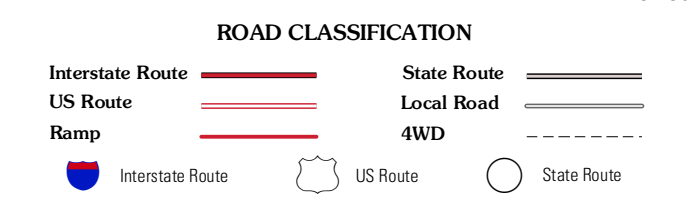
CONTOUR INTERVAL 40 FEET
NORTH AMERICAN VERTICAL DATUM OF 1988

This map was produced to conform with the
National Geospatial Program US Topo Product Standard, 2011.
A metadata file associated with this product is draft version 0.6.1



QUADRANGLE LOCATION

East of Wanaboa Canyon	Saline Peak	Dry Mountain
Lower Warm Springs	West of Teakettle Junction	Teakettle Junction
Craig Canyon	West of Ubehebe Peak	Ubehebe Peak



WEST OF TEAKETTLE JUNCTION, CA
2012

ADJOINING 7.5' QUADRANGLES