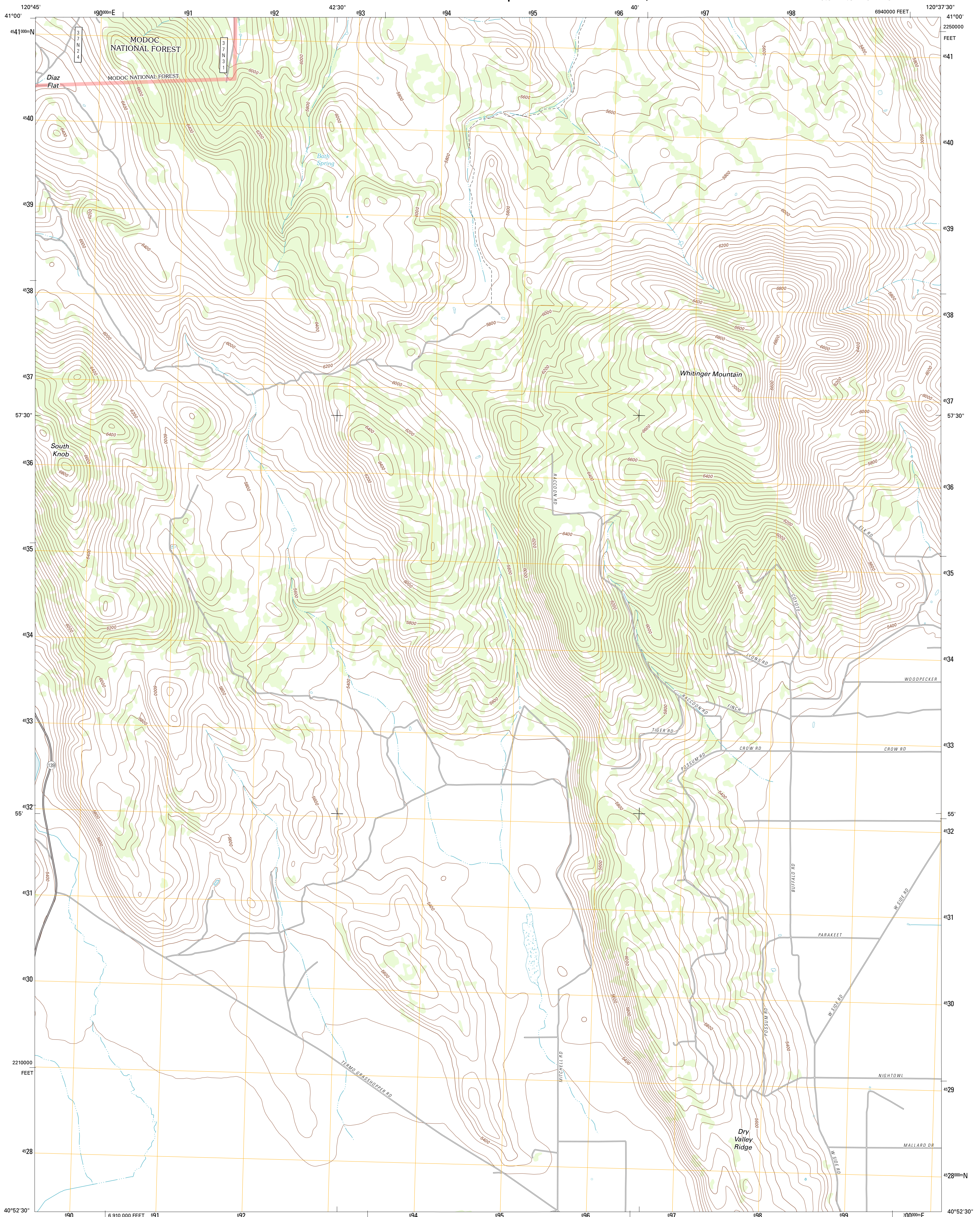




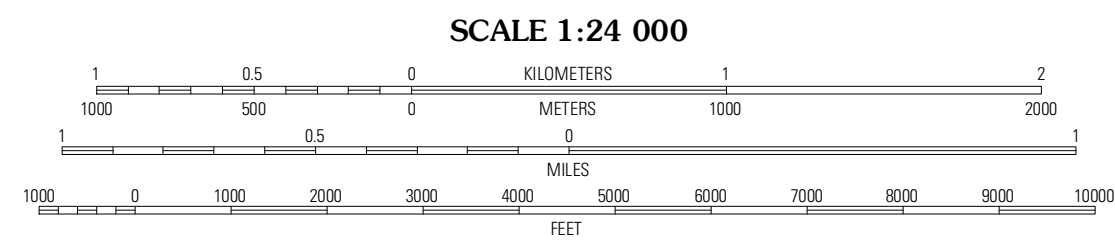
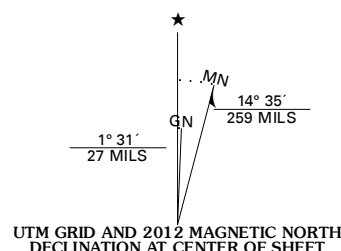
U.S. DEPARTMENT OF THE INTERIOR  
U. S. GEOLOGICAL SURVEY



WHITINGER MOUNTAIN QUADRANGLE  
CALIFORNIA-LASSEN CO.  
7.5-MINUTE SERIES



Produced by the United States Geological Survey  
North American Datum of 1983 (NAD83)  
World Geodetic System of 1984 (WGS84). Projection and  
1 000-meter grid: Universal Transverse Mercator, Zone 10T  
10 000-foot ticks: California Coordinate System of 1983  
(zone 1)



QUADRANGLE LOCATION

Lane Reservoir	Ash Valley	Holbrook Canyon
Said Valley	Whiting Mountain	Anderson Mountain
Sheephead	Grasshopper Valley	Cleghorn Flat

**ROAD CLASSIFICATION**

Interstate Route	State Route
US Route	Local Road
Ramp	4WD
Interstate Route	US Route
FS Primary Route	FS Passenger Route
	FS High Clearance Route

Check with local Forest Service unit for current travel conditions and restrictions.

**WHITINGER MOUNTAIN, CA**  
2012

Imagery.....NAIP, June 2010 - July 2010  
Roads.....02/2006-2011 TomTom  
Roads within US Forest Service Lands.....FS Topo Data  
with limited Forest Service updates, 2009  
Names.....GNIS, 2011  
Hydrography.....National Hydrography Dataset, 2010  
Contours.....National Elevation Dataset, 1999  
Boundaries.....Census, IBWC, IBC, USGS, 1972 - 2010

U.S. National Grid	100,000-m Square ID
FL GL	
Grid Zone Designation	10T

CONTOUR INTERVAL 40 FEET  
NORTH AMERICAN VERTICAL DATUM OF 1988

This map was produced to conform with the  
National Geospatial Program US Topo Product Standard, 2011.  
A metadata file associated with this product is draft version 0.6.1

ADJOINING 7.5 QUADRANGLES