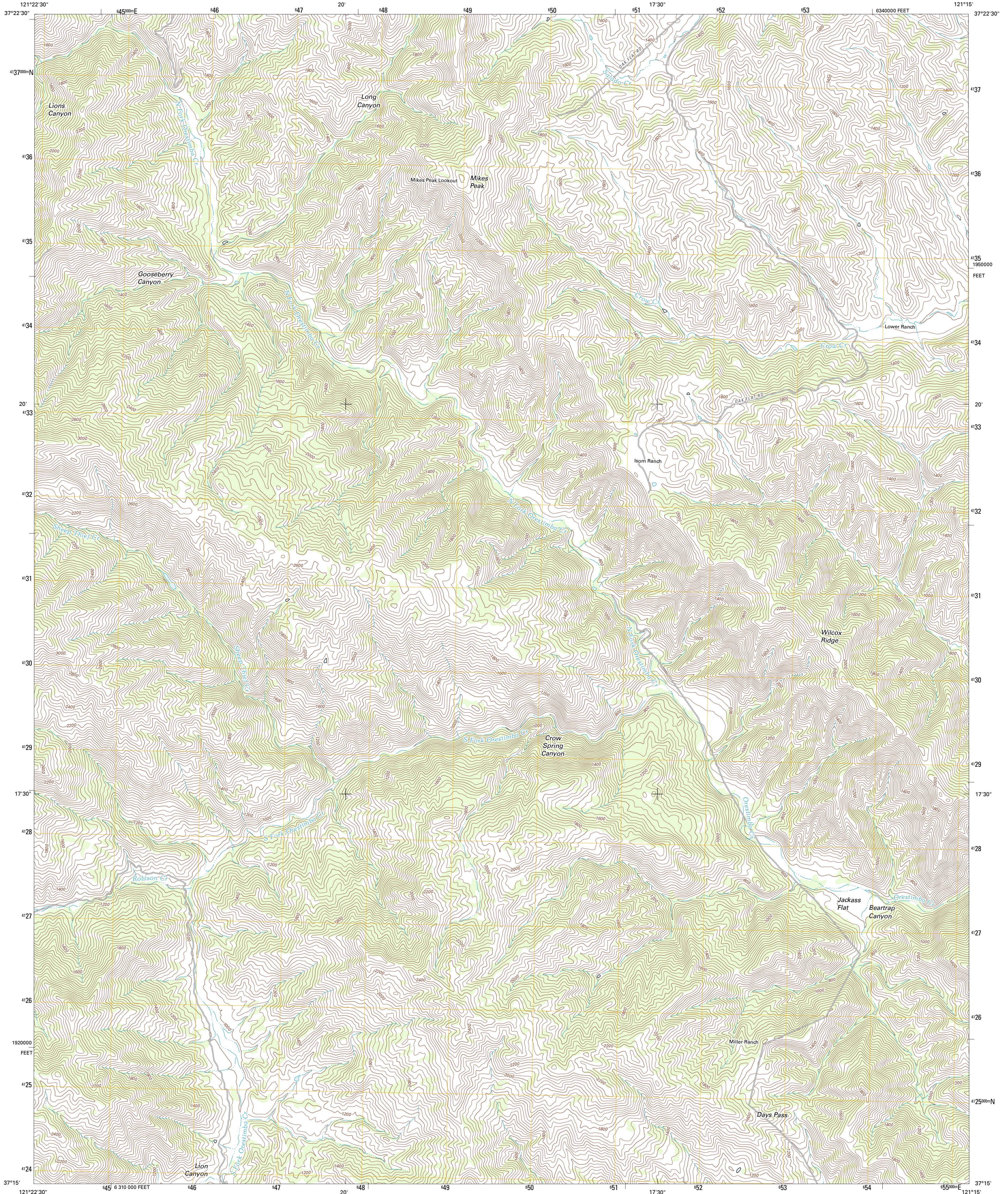




U.S. DEPARTMENT OF THE INTERIOR
U. S. GEOLOGICAL SURVEY

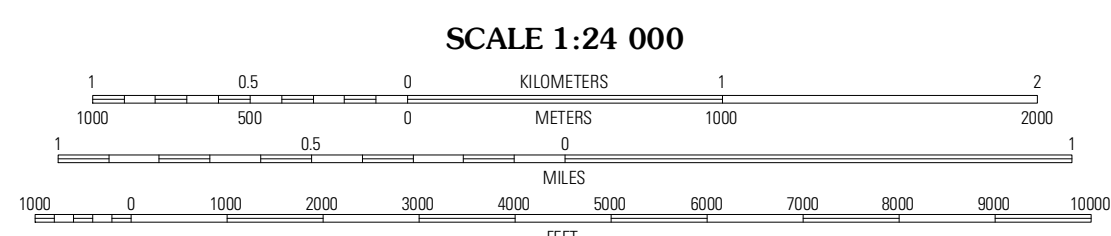
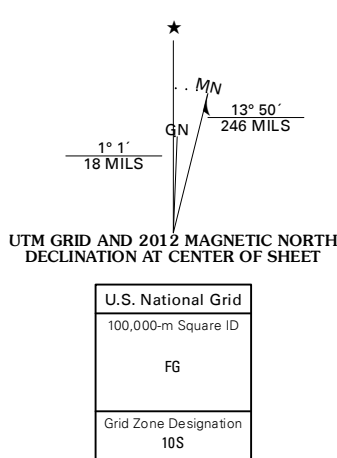


WILCOX RIDGE QUADRANGLE
CALIFORNIA-STANISLAUS CO.
7.5-MINUTE SERIES



Produced by the United States Geological Survey
North American Datum of 1983 (NAD83)
World Geodetic System of 1994 (WGS84). Projection and
10 000-foot ticks: California Coordinate System of 1983
(zone 3)

Imagery.....©NAP, September 2010
Roads.....©2006-2011 TomTom
Names.....GNIS, 2011
Hydrography.....National Hydrography Dataset, 2010
Contours.....National Elevation Dataset, 2008
Boundaries.....Census, IBWC, IBC, USGS, 1972 - 2010



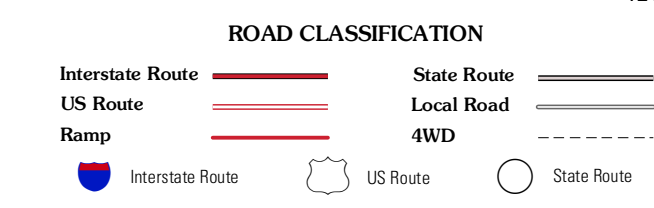
CONTOUR INTERVAL 40 FEET
NORTH AMERICAN VERTICAL DATUM OF 1988

This map was produced to conform with the National Geospatial Program US Topo Product Standard, 2011. A metadata file associated with this product is draft version 0.6.1



QUADRANGLE LOCATION

Mount Boardman	Copper Mountain	Paterson
Mount Stakes	Wilcox Ridge	Orestimba Peak
Mississippi Creek	Mustang Peak	Crevice Peak



WILCOX RIDGE, CA
2012

ADJOINING 7.5 QUADRANGLES