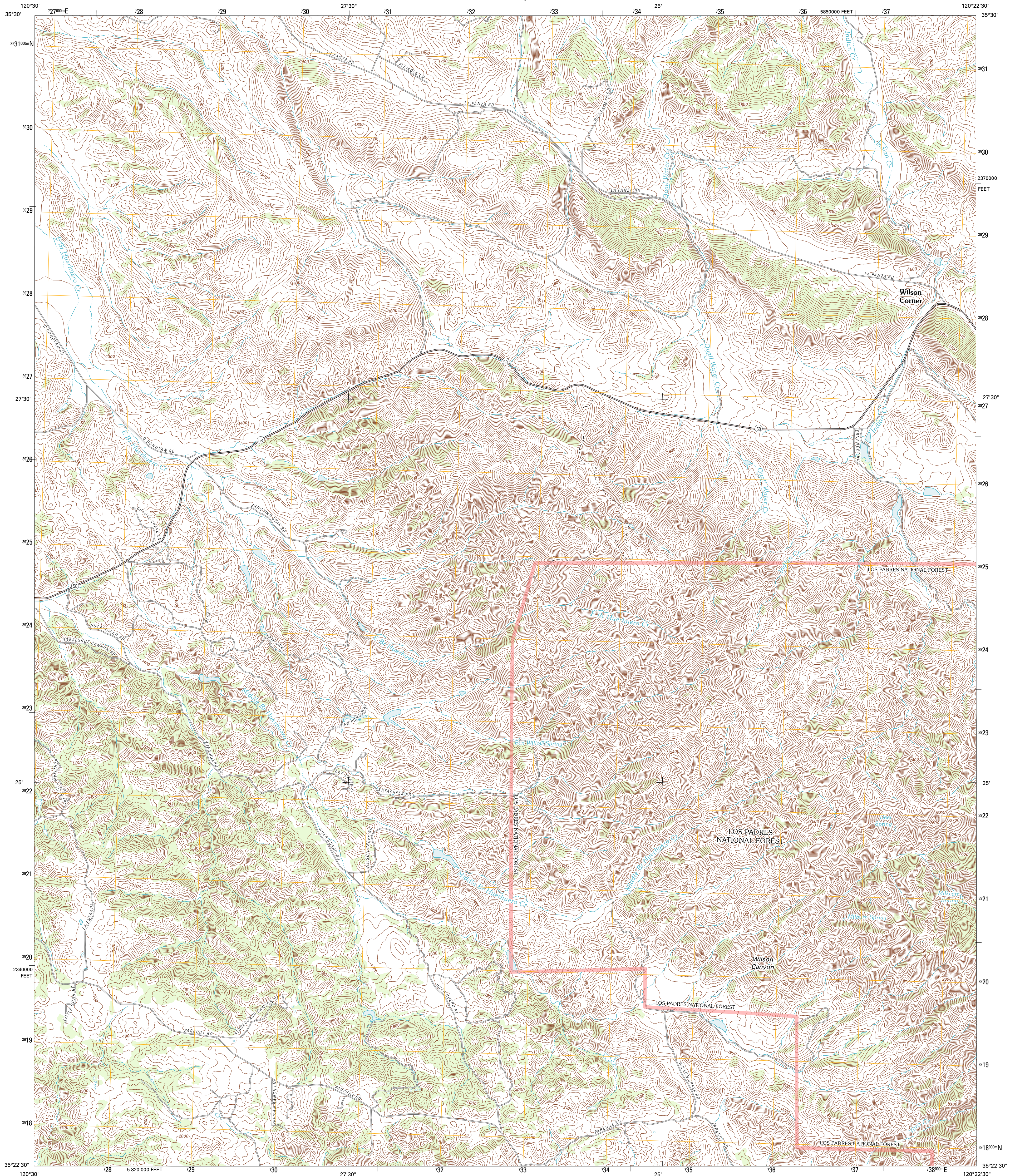




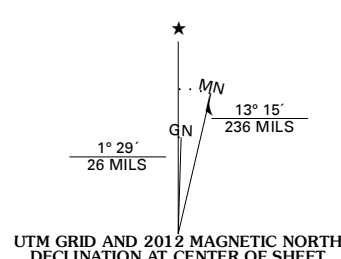
U.S. DEPARTMENT OF THE INTERIOR  
U. S. GEOLOGICAL SURVEY



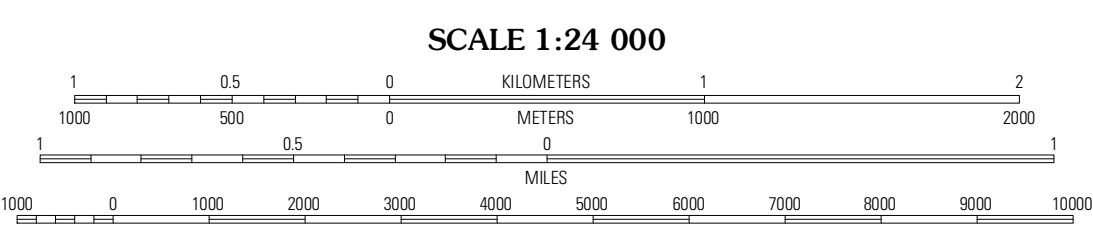
WILSON CORNER QUADRANGLE  
CALIFORNIA-SAN LUIS OBISPO CO.  
7.5-MINUTE SERIES



Produced by the United States Geological Survey  
North American Datum of 1983 (NAD83)  
World Geodetic System of 1984 (WGS84) Projection and  
1,000-meter grid. Universal Transverse Mercator, Zone 10S  
10,000-foot ticks: California Coordinate System of 1983  
(zone 5)



U.S. National Grid	100,000-m Square ID
6E	
Grid Zone Designation	10S



CONTOUR INTERVAL 20 FEET  
NORTH AMERICAN VERTICAL DATUM OF 1988

This map was produced to conform with the  
National Geospatial Program US Topo Product Standard, 2011.  
A metadata file associated with this product is draft version 0.6.1



QUADRANGLE LOCATION

Creston	Shedd Canyon	Camatta Canyon
Santa Margarita	Wilson Corner	Camatta Ranch
Lopez Mountain	Santa Margarita Lake	Pozo Summit

ADJOINING 7.5' QUADRANGLES

**ROAD CLASSIFICATION**

Interstate Route	State Route
US Route	Local Road
Ramp	4WD
FS Primary Route	FS Passenger Route
	FS High Clearance Route

Check with local Forest Service unit for current travel conditions and restrictions.

WILSON CORNER, CA  
2012

Imagery.....NAP, June 2010  
Roads.....02/06-2011 TopoTom  
Roads within US Forest Service Lands.....FSTopo Data  
with limited Forest Service updates, 2009  
Names.....GNIS, 2011  
Hydrography.....National Hydrography Dataset, 2010  
Contours.....National Elevation Dataset, 2005  
Boundaries.....Census, IBWC, IBC, USGS, 1972 - 2010