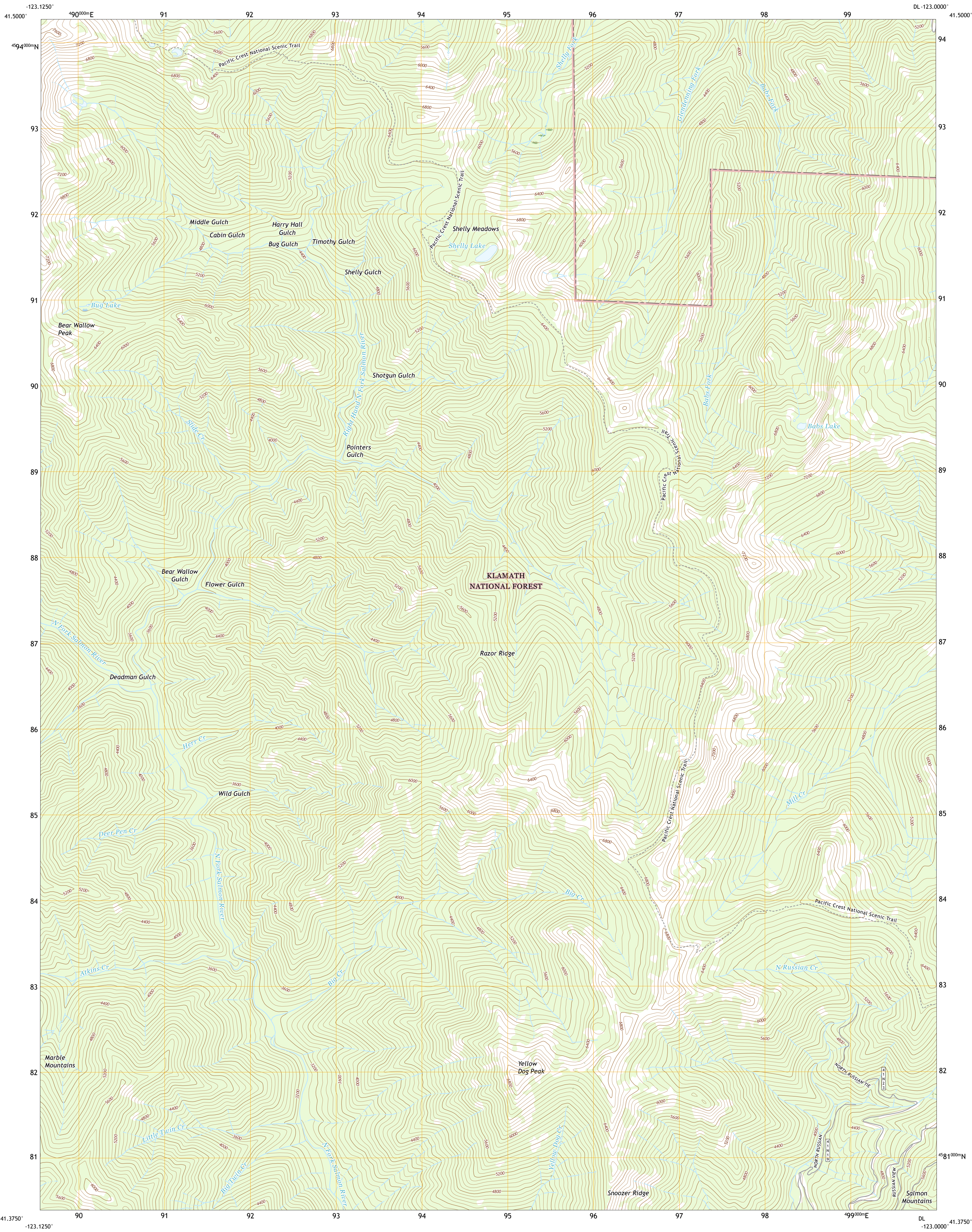




U.S. DEPARTMENT OF THE INTERIOR
U.S. GEOLOGICAL SURVEY

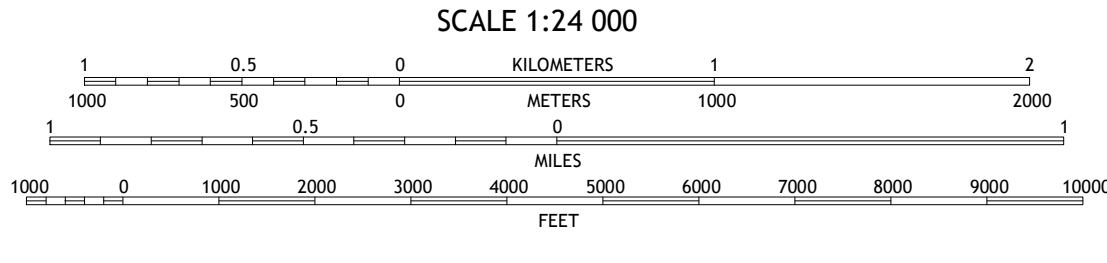
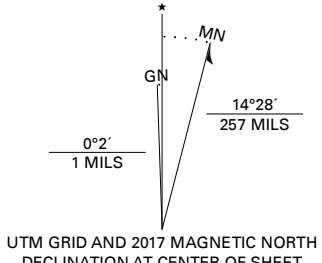


YELLOW DOG PEAK QUADRANGLE
CALIFORNIA - SISKIYOU COUNTY
7.5-MINUTE SERIES



Produced by the United States Geological Survey
North American Datum of 1983 (NAD83)
World Geodetic System of 1984 (WGS84). Projection and
1 000-meter grid: Universal Transverse Mercator, Zone 10T
This map is not a legal document. Boundaries may be
generalized for this map scale. Private lands within government
reservations may not be shown. Obtain permission before
entering private lands.

Imagery.....NAIP, July 2016 - October 2016
Roads.....U.S. Census Bureau, 2016
Roads within US Forest Service Lands.....FSTopo
Data with limited Forest Service updates, 2018
Names.....GNIS, 1981 - 2016
Hydrography.....National Hydrography Dataset, 2003 - 2017
Contours.....National Elevation Dataset, 2001 - 2002
Boundaries.....Multiple sources; see metadata file
Public Land Survey System.....BLM, 2018
Wetlands.....FWS National Wetlands Inventory 1975 - 1983



1	2	3
4	5	6
7	8	9

1 Marble Mountain
2 Boulder Peak
3 Greenview
4 English Peak
5 Etna
6 Sawyers Bar
7 Tanners Peak
8 Eaton Peak

ROAD CLASSIFICATION	
Expressway	Local Connector
Secondary Hwy	Local Road
Ramp	4WD
Interstate Route	US Route
FS Primary Route	FS Passenger Route
	FS High Clearance Route

Check with local Forest Service unit
for current travel conditions and restrictions.

YELLOW DOG PEAK, CA
2018

