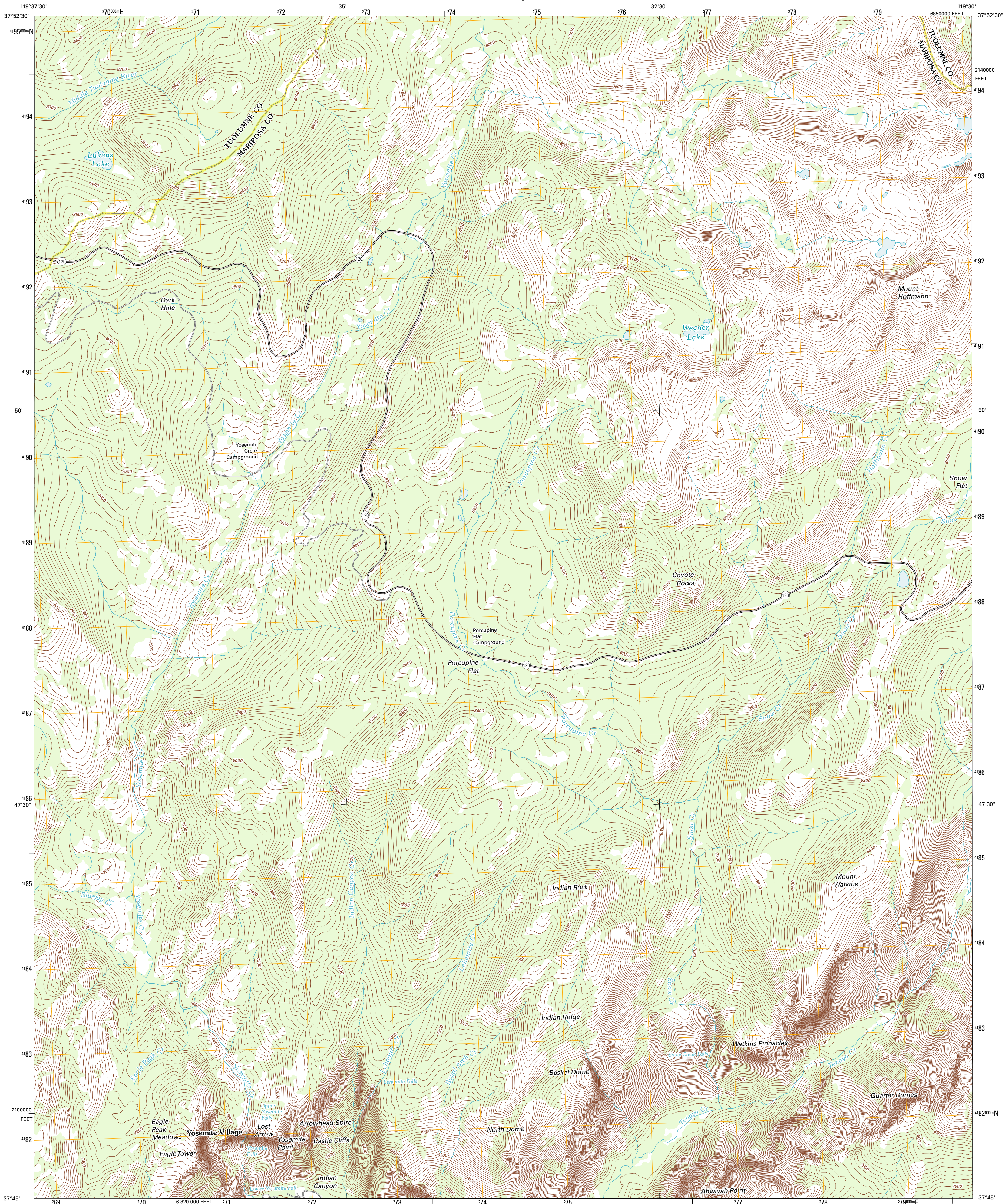




U.S. DEPARTMENT OF THE INTERIOR  
U. S. GEOLOGICAL SURVEY

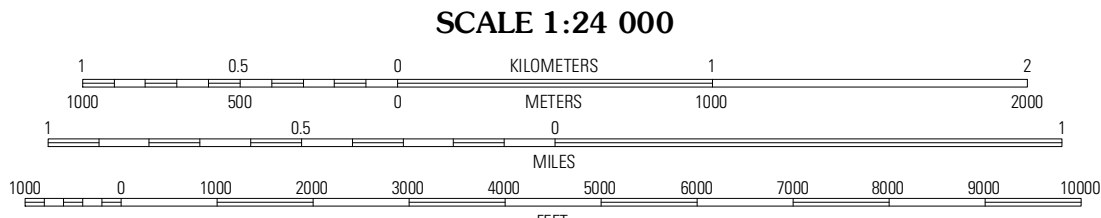
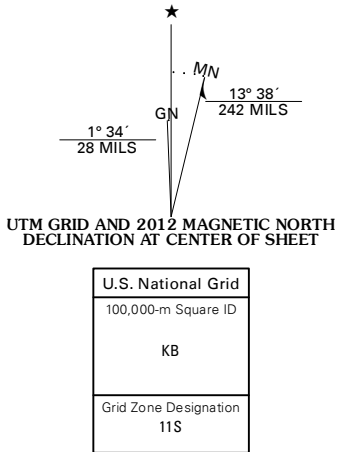


YOSEMITE FALLS QUADRANGLE  
CALIFORNIA  
7.5-MINUTE SERIES



Produced by the United States Geological Survey  
North American Datum of 1983 (NAD83)  
World Geodetic System of 1984 (WGS84). Projection and  
1 000-meter grid. Universal Transverse Mercator, Zone 11S  
10 000-foot ticks. California Coordinate System of 1983  
(zone 3)

Imagery.....NAIP, July 2010  
Roads.....©2006-2011 TomTom  
Names.....GNIS, 2011  
Hydrography.....National Hydrography Dataset, 2010  
Contours.....National Elevation Dataset, 2001  
Boundaries.....Census, IBWC, IBC, USGS, 1972 - 2010



CONTOUR INTERVAL 40 FEET  
NORTH AMERICAN VERTICAL DATUM OF 1988  
This map was produced to conform with the  
National Geospatial Program US Topo Product Standard, 2011.  
A metadata file associated with this product is draft version 0.6.1



|                        |                |             |
|------------------------|----------------|-------------|
| Hetch Hetchy Reservoir | Ten Lakes      | Falls Ridge |
| Tamarack Flat          | Yosemite Falls | Tenaya Lake |
| El Capitan             | Half Dome      | Merced Peak |

ADJOINING 7.5' QUADRANGLES

| ROAD CLASSIFICATION |             |             |
|---------------------|-------------|-------------|
| Interstate Route    | State Route | Local Road  |
| US Route            | 4WD         |             |
| Ramp                |             |             |
| Interstate Route    | US Route    | State Route |

YOSEMITE FALLS, CA  
2012