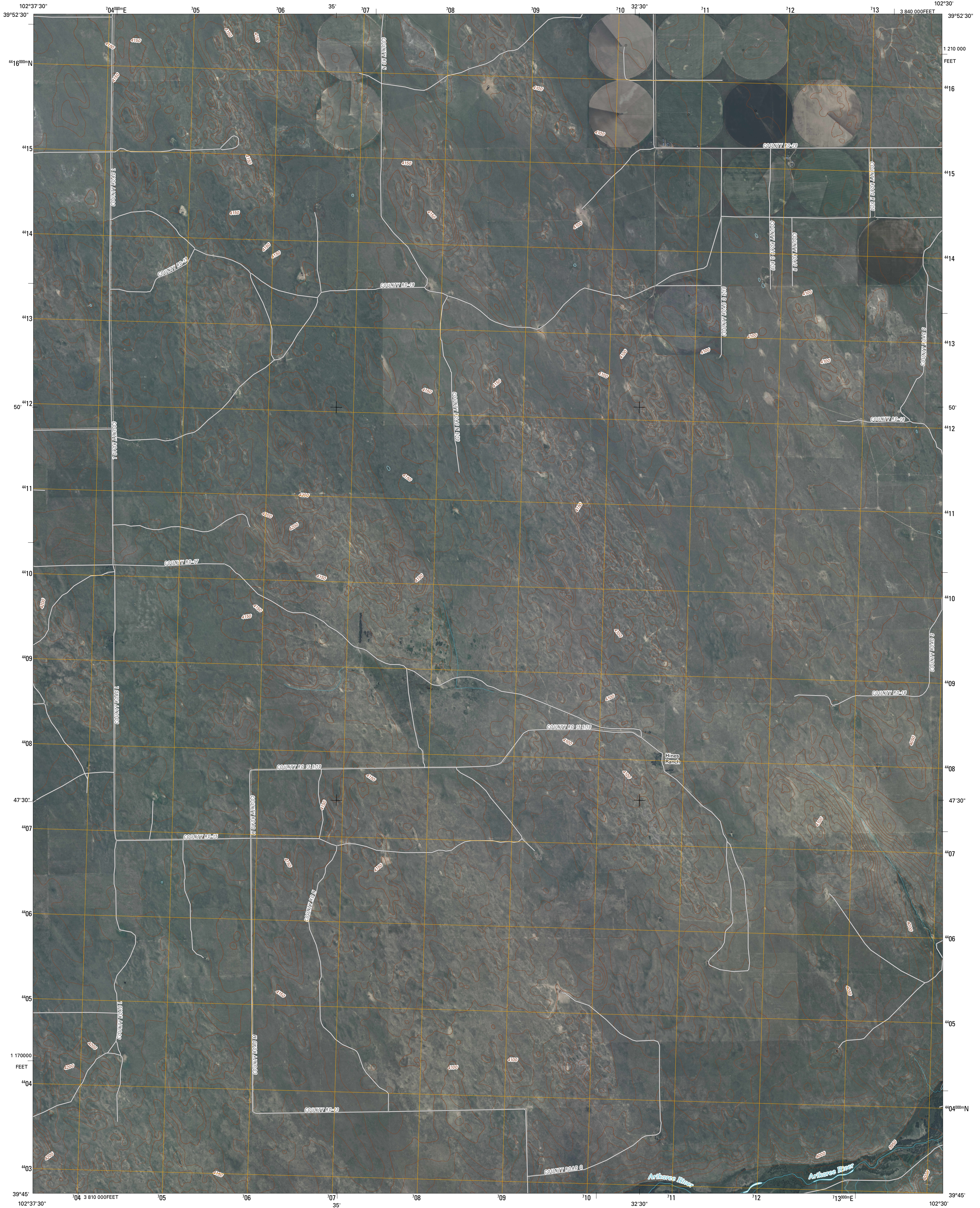




U.S. DEPARTMENT OF THE INTERIOR  
U. S. GEOLOGICAL SURVEY

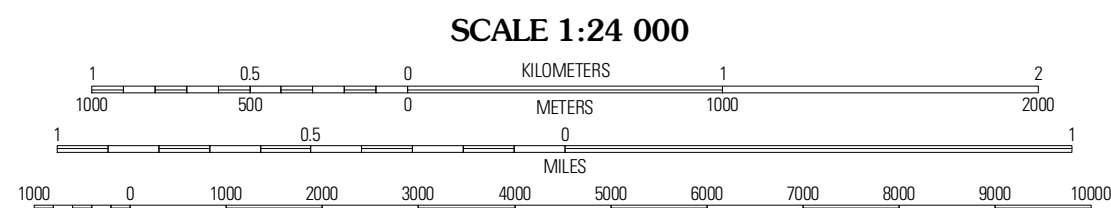
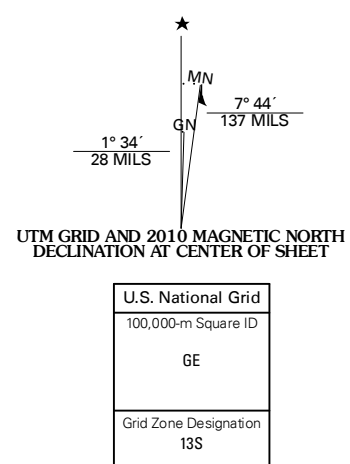


ABARR SE QUADRANGLE  
COLORADO  
7.5-MINUTE SERIES

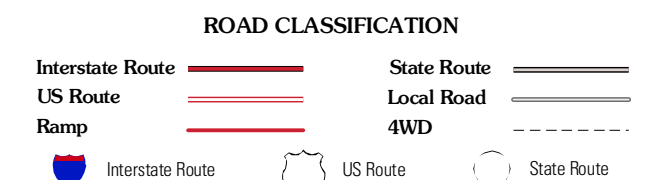
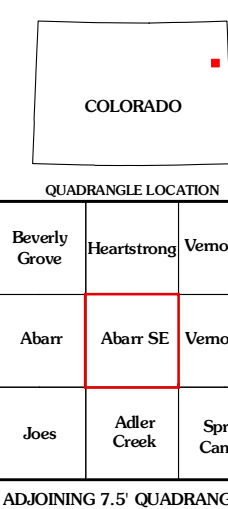


Produced by the United States Geological Survey  
North American Datum of 1983 (NAD83)  
World Geodetic System of 1984 (WGS84) Projection and  
1 000-meter grid: Universal Transverse Mercator, Zone 13S  
10 000-foot ticks: Colorado Coordinate System of 1983  
(north zone)

Imagery:.....NAP, June 2009  
Roads:.....2006-2010 Tele Atlas  
Names:.....GNIS, 2008  
Hydrography:.....National Hydrography Dataset, 2009  
Contours:.....National Elevation Dataset, 2007



CONTOUR INTERVAL 10 FEET  
NORTH AMERICAN VERTICAL DATUM OF 1988  
This map was produced to conform with version 0.5.10 of the  
draft USGS Standards for 7.5-Minute Quadrangle Maps.  
A metadata file associated with this product is draft version 0.5.11



QUADRANGLE LOCATION

Beverly Grow	Hearstrong	Vernon NW
Abarr	<b>Abarr SE</b>	Vernon SW
Joel	Adler Creek	Spring Canyon

ADJOINING 7.5 QUADRANGLES

ABARR SE, CO  
2010