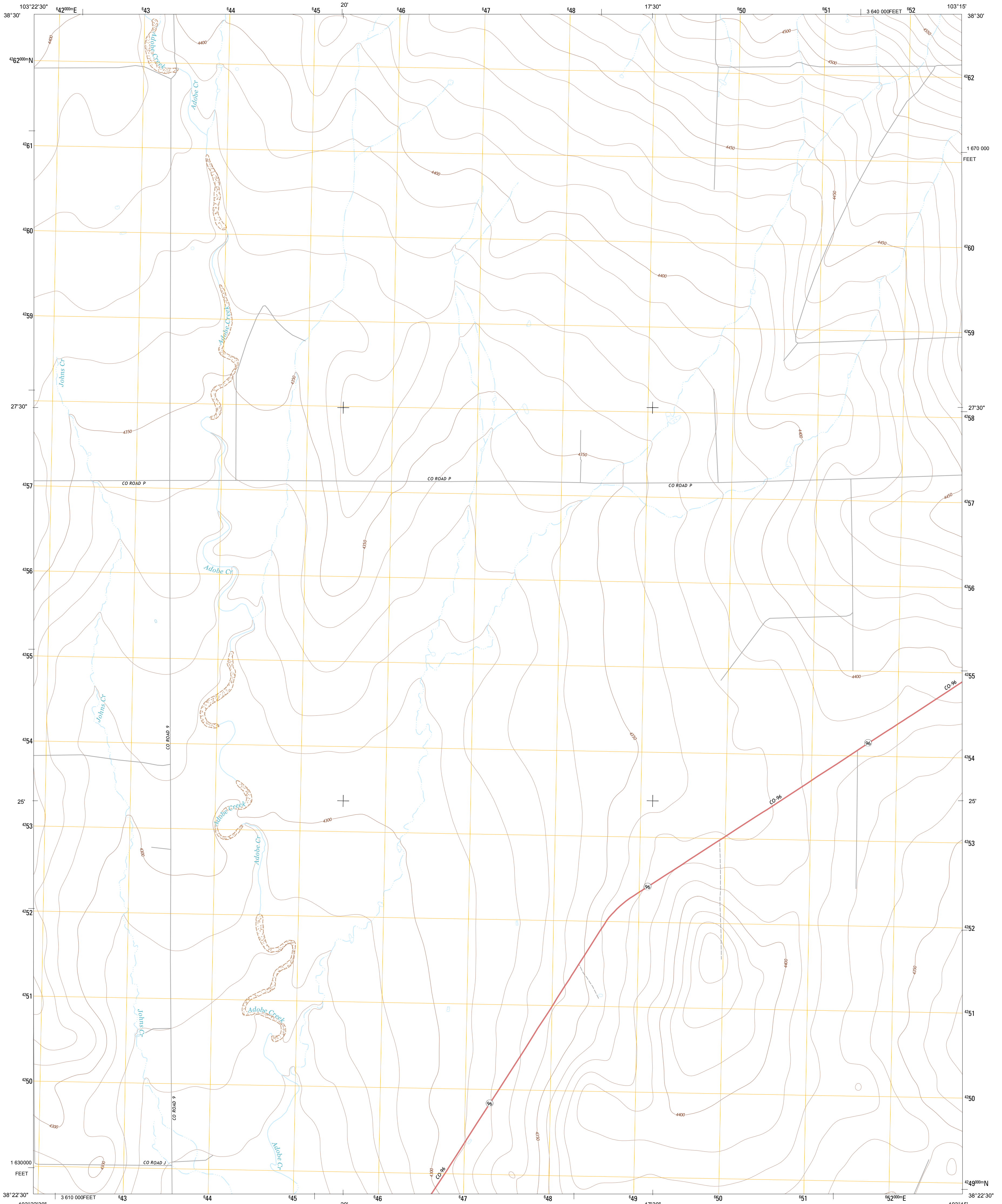




U.S. DEPARTMENT OF THE INTERIOR  
U. S. GEOLOGICAL SURVEY

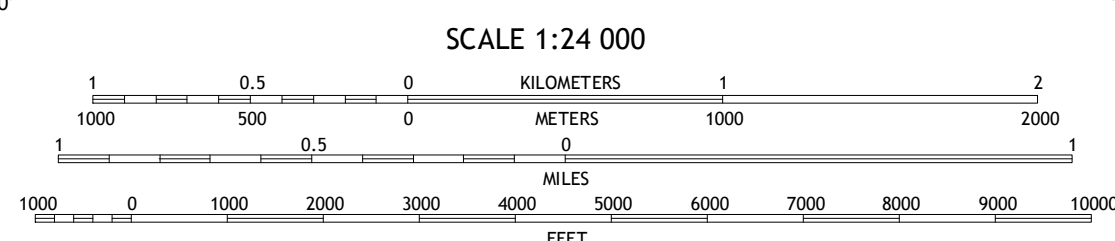
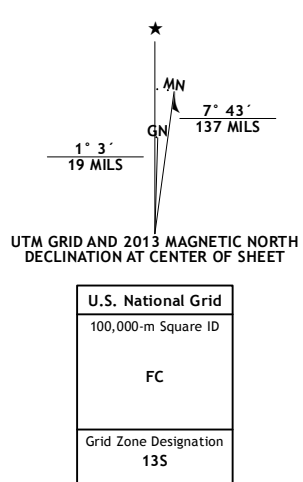


ARLINGTON NE QUADRANGLE  
COLORADO-KIOWA CO.  
7.5-MINUTE SERIES



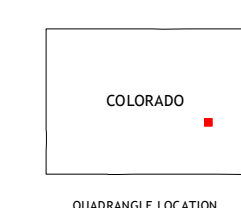
Produced by the United States Geological Survey  
North American Datum of 1983 (NAD83)  
World Geodetic System of 1984 (WGS84). Projection and  
1 000-meter grid: Universal Transverse Mercator, Zone 13S  
10 000-foot ticks: Colorado Coordinate System of 1983 (south  
zone)

Imagery.....NAIP, July 2011 - August 2011  
Roads.....2006-2012 TomTom  
Names.....GNIS, 2013  
Hydrography.....National Hydrography Dataset, 2011  
Contours.....National Elevation Dataset, 2007  
Boundaries.....IRWC, IBC, USGS, 1972 - 2012  
Public Land Survey System.....BLM, 2011



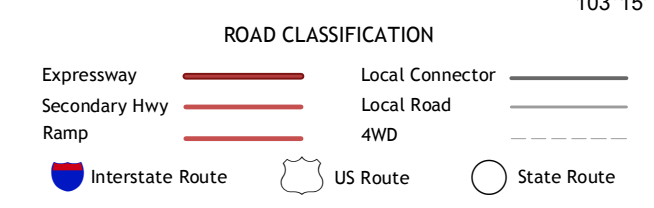
CONTOUR INTERVAL 10 FEET  
NORTH AMERICAN VERTICAL DATUM OF 1988

This map was produced to conform with the  
National Geospatial Program US Topo Product Standard, 2011.  
A metadata file associated with this product is draft version 0.6.14



Scott Draw	Bluff Spring	Galatea SW
Trimble Lake	Arlington NE	Haswell
Houston Lakes	Arlington	Long Lake

ADJOINING 7.5 QUADRANGLES



ARLINGTON NE, CO  
2013