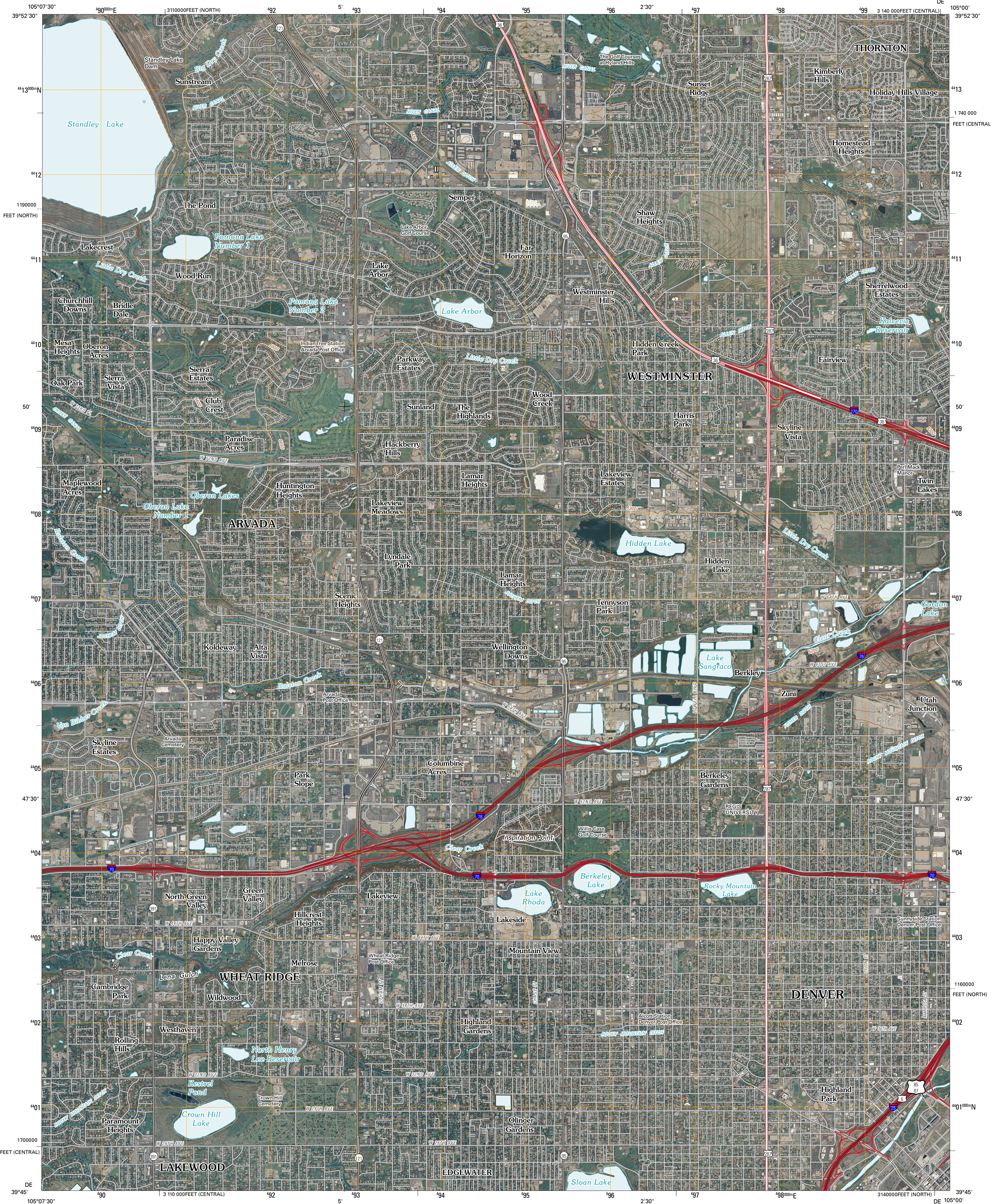




U.S. DEPARTMENT OF THE INTERIOR  
U. S. GEOLOGICAL SURVEY

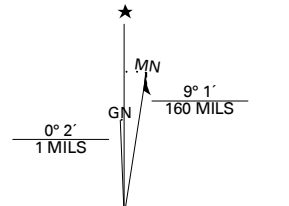


ARVADA QUADRANGLE  
COLORADO  
7.5-MINUTE SERIES

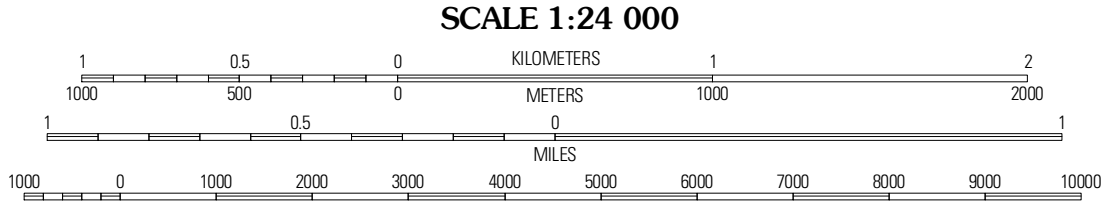


Produced by the United States Geological Survey  
North American Datum of 1983 (NAD83)  
World Geodetic System of 1984 (WGS84) Projection and  
1 000-meter grid: Colorado Transverse Mercator, Zone 13S  
10 000-foot ticks: Colorado Coordinate System of 1983  
(central and north zones)

Imagery:.....NADP, June 2009  
Roads:.....62006-2010 Tele Atlas  
Names:.....GNIS, 2009  
Hydrography:.....National Hydrography Dataset, 2009  
Contours:.....National Elevation Dataset, 2009

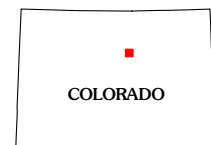


U.S. National Grid
100,000m Square ID
DE
Grid Zone Designation
13S



CONTOUR INTERVAL 10 FEET  
NORTH AMERICAN VERTICAL DATUM OF 1988

This map was produced to conform with version 0.5.10 of the  
draft USGS Standards for 7.5-Minute Quadrangle Maps.  
A metadata file associated with this product is draft version 0.5.11



QUADRANGLE LOCATION		
Louisville	Lafayette	Eastlake
Golden	Arvada	Commerce City
Morrison	Fort Logan	Englewood

ADJOINING 7.5' QUADRANGLES

ROAD CLASSIFICATION	
Interstate Route	State Route
US Route	Local Road
Ramp	4WD

Interstate Route US Route State Route

ARVADA, CO  
2011