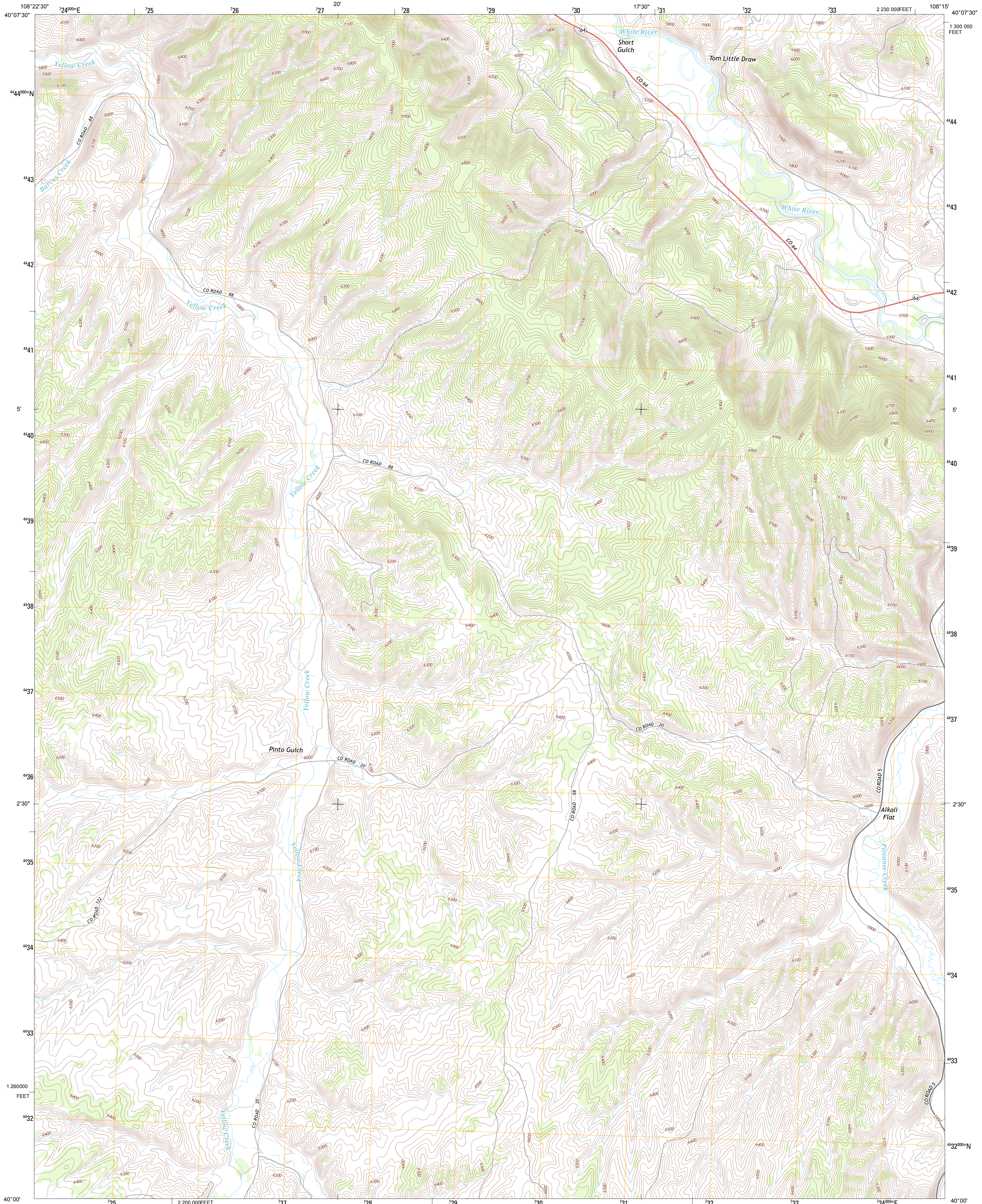




U.S. DEPARTMENT OF THE INTERIOR  
U. S. GEOLOGICAL SURVEY

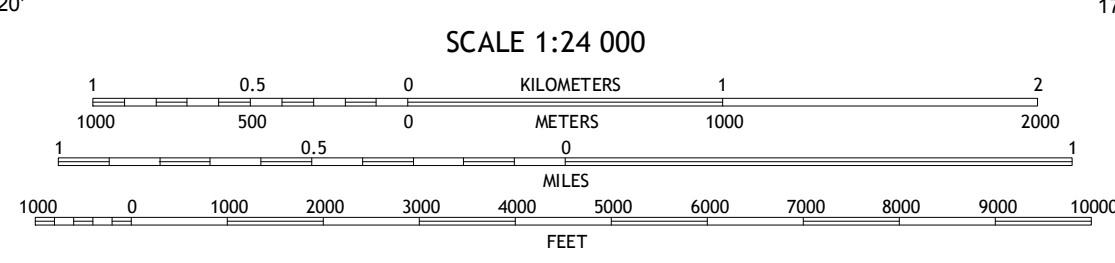
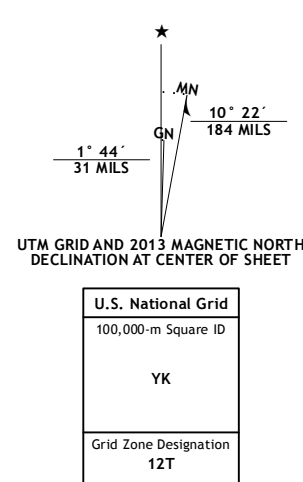


BARCUS CREEK SE QUADRANGLE  
COLORADO-RIO BLANCO CO.  
7.5-MINUTE SERIES



Produced by the United States Geological Survey  
North American Datum of 1983 (NAD83)  
World Geodetic System of 1984 (WGS84), Projection and  
1 000-meter grid; Universal Transverse Mercator, Zone 12T  
10 000-foot ticks: Colorado Coordinate System of 1983 (north zone)

Imagery.....NAIP, July 2011  
Roads.....©2006-2012 TomTom  
Names.....GNIS, 2013  
Hydrography.....National Hydrography Dataset, 2011  
Contours.....National Elevation Dataset, 2006  
Boundaries.....IBWC, IBC, USGS, 1972 - 2012  
Public Land Survey System.....BLM, 2011



This map was produced to conform with the National Geospatial Program US Topo Product Standard, 2011. A metadata file associated with this product is draft version 0.6.14

ROAD CLASSIFICATION

- Expressway
- Secondary Hwy
- Ramp
- Interstate Route
- US Route
- Local Connector
- Local Road
- 4WD
- State Route

QUADRANGLE LOCATION

|              |                 |                  |
|--------------|-----------------|------------------|
| Rough Gulch  | Smizer Gulch    | Indian Valley    |
| Barcus Creek | Barcus Creek SE | White River City |
| Wolf Ridge   | Square S Ranch  | Greasewood Gulch |

ADJOINING 7.5 QUADRANGLES

BARCUS CREEK SE, CO  
2013