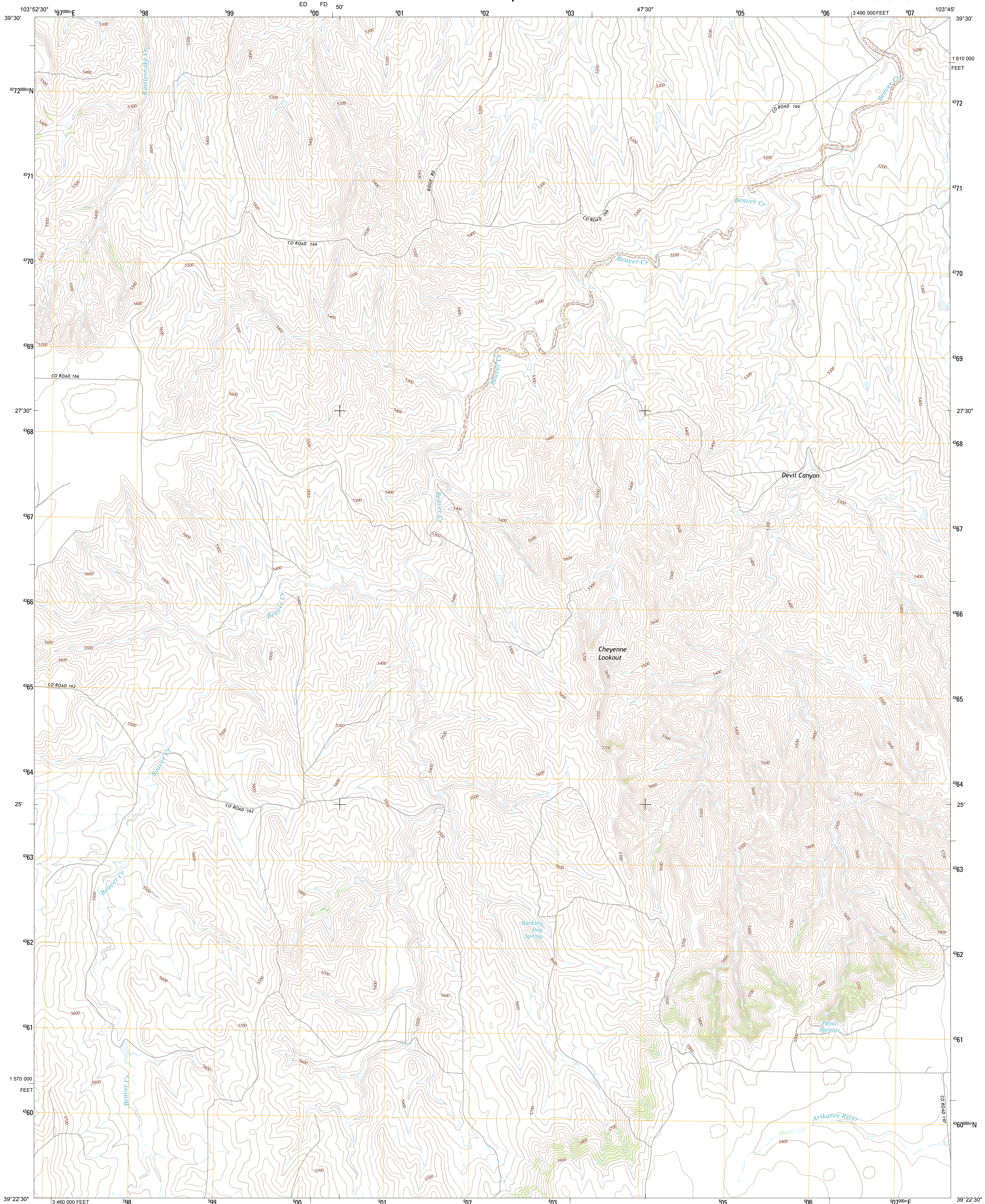




U.S. DEPARTMENT OF THE INTERIOR  
U. S. GEOLOGICAL SURVEY

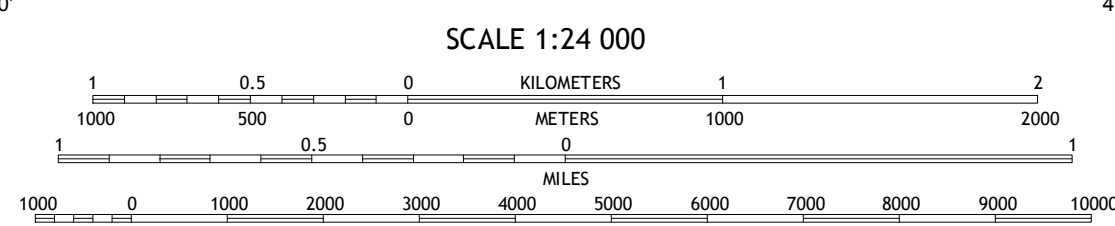
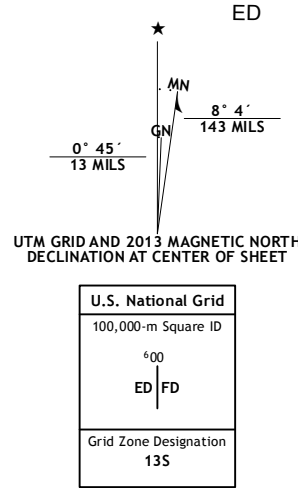


BARKING DOG SPRING QUADRANGLE  
COLORADO-ELBERT CO.  
7.5-MINUTE SERIES

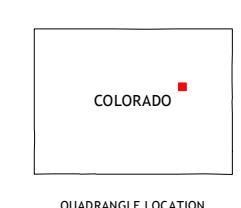


Produced by the United States Geological Survey  
North American Datum of 1983 (NAD83)  
World Geodetic System of 1984 (WGS84) Projection and  
1 000-meter grid: Universal Transverse Mercator, Zone 13S  
10 000-foot ticks: Colorado Coordinate System of 1983 (central zone)

Imagery.....NAIP, July 2011  
Roads.....©2006-2012 TomTom  
Names.....GNS, 2013  
Hydrography.....National Hydrography Dataset, 2011  
Contours.....National Elevation Dataset, 2007  
Boundaries.....Census, BWC, IBC, USGS, 1972 - 2012  
Public Land Survey System.....BLM, 2011

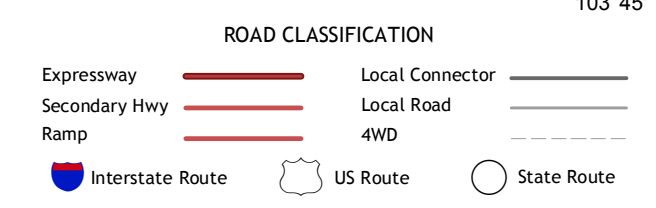


CONTOUR INTERVAL 20 FEET  
NORTH AMERICAN VERTICAL DATUM OF 1988  
This map was produced to conform with the National Geospatial Program US Topo Product Standard, 2011. A metadata file associated with this product is draft version 0.6.14



QUADRANGLE LOCATION

Noonan Reservoir SW	Cottonwood Valley South	Last Chance SW
Agate	Barking Dog Spring	T Draw
Beuck Draw	River Bend	Limon



BARKING DOG SPRING, CO  
2013

ADJOINING 7.5 QUADRANGLES