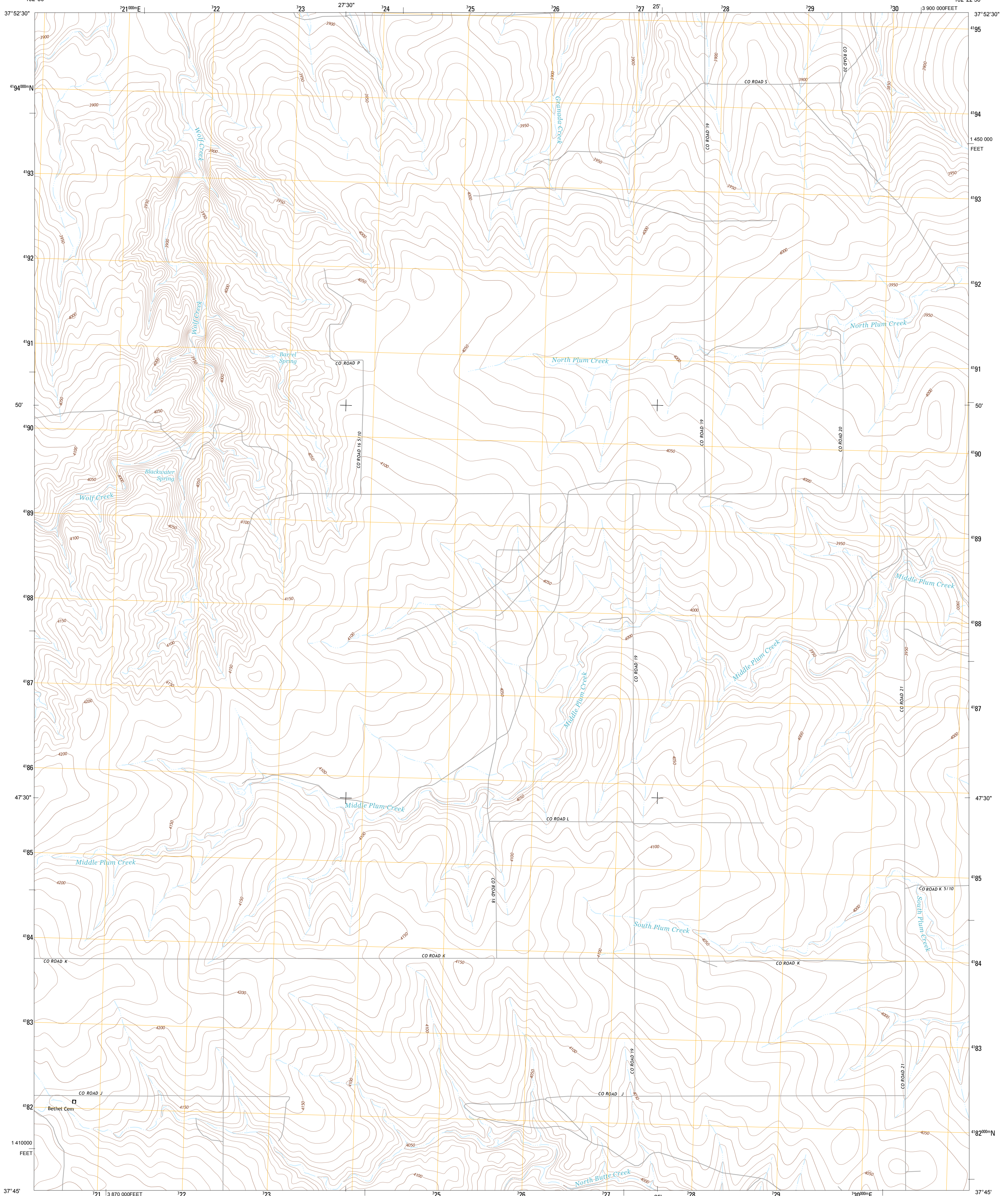




U.S. DEPARTMENT OF THE INTERIOR
U. S. GEOLOGICAL SURVEY

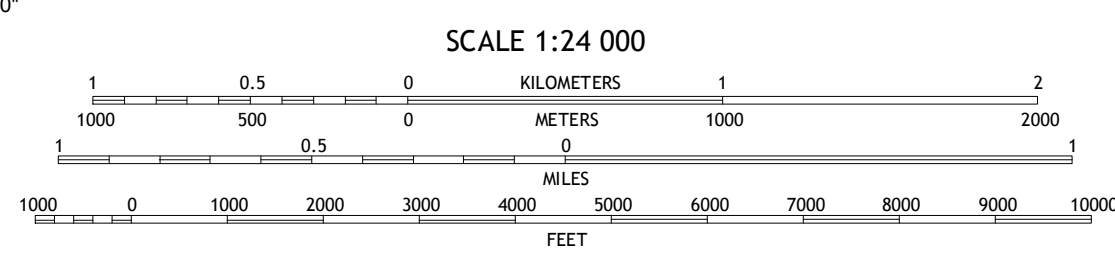
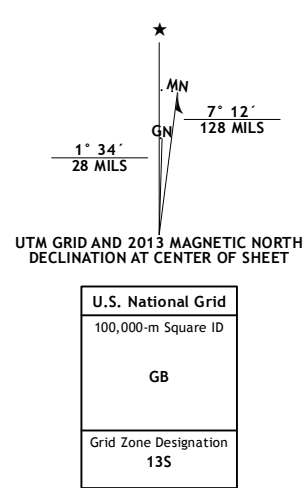


BARREL SPRING QUADRANGLE
COLORADO-PROWERS CO.
7.5-MINUTE SERIES

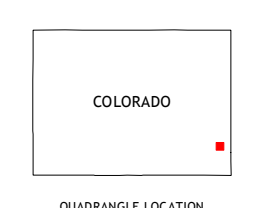


Produced by the United States Geological Survey
North American Datum of 1983 (NAD83)
World Geodetic System of 1984 (WGS84) Projection and
1 000-meter grid: Universal Transverse Mercator, Zone 13S
10 000-foot ticks: Colorado Coordinate System of 1983 (south zone)

Imagery.....NAIP, July 2011
Roads.....©2006-2012 TomTom
Names.....GNIS, 2013
Hydrography.....National Hydrography Dataset, 2011
Contours.....National Elevation Dataset, 2007
Boundaries, BWC, BIC, USGS, 1972-2012
Public Land Survey System.....BLM, 2011

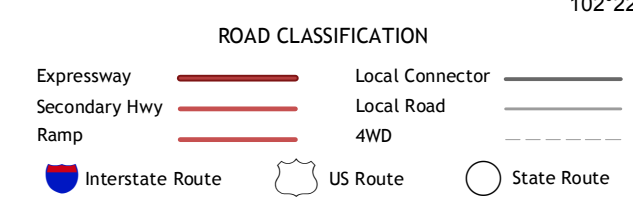


This map was produced to conform with the National Geospatial Program US Topo Product Standard, 2011. A metadata file associated with this product is draft version 0.6.14



QUADRANGLE LOCATION

Cat Creek NE	North Plum Creek NW	North Plum Creek NE
Gobblers Knob	Barrel Spring	North Plum Creek SE
Two Buttes Reservoir	Two Buttes NW	Plains Community



BARREL SPRING, CO
2013

ADJOINING 7.5 QUADRANGLES