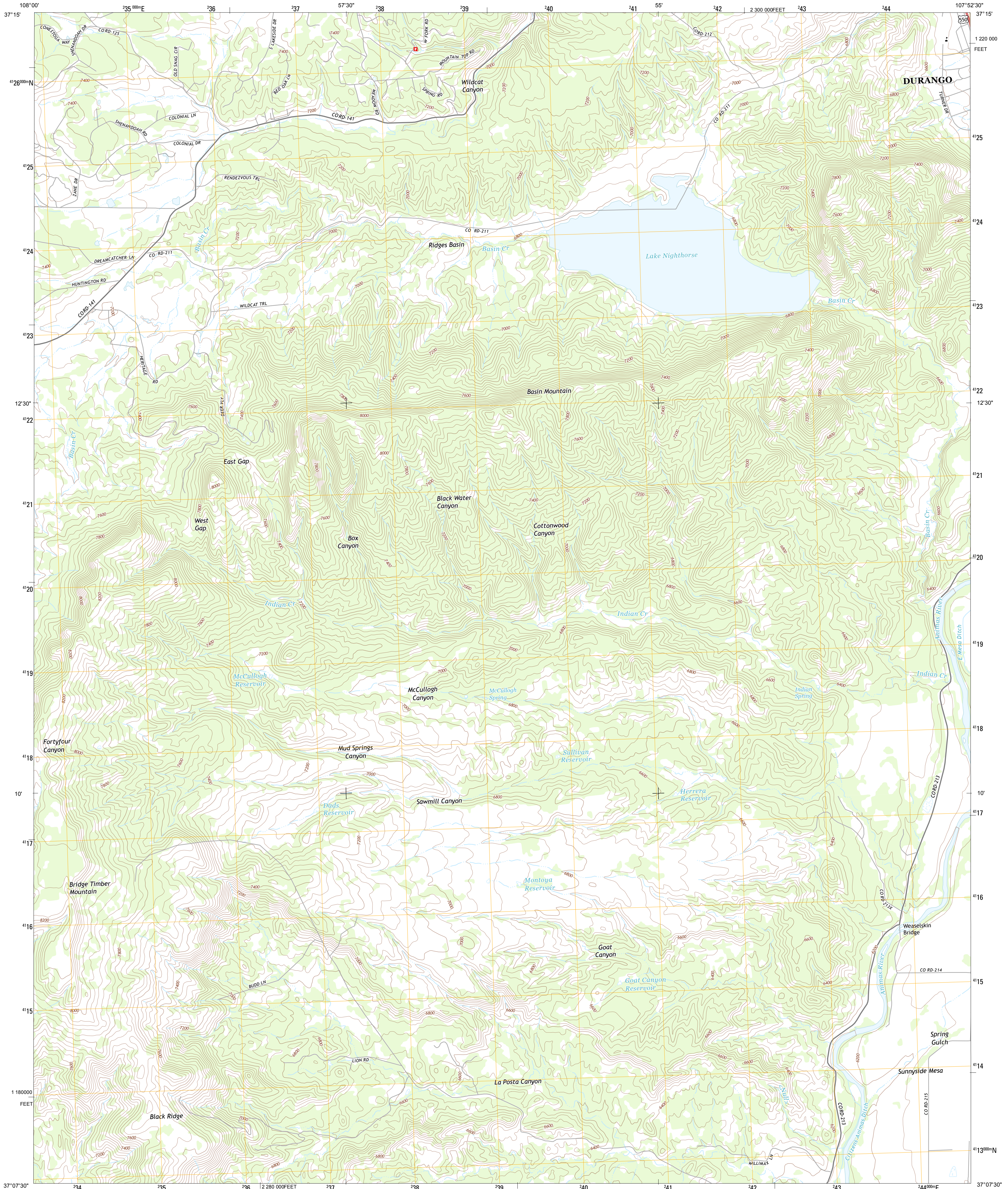




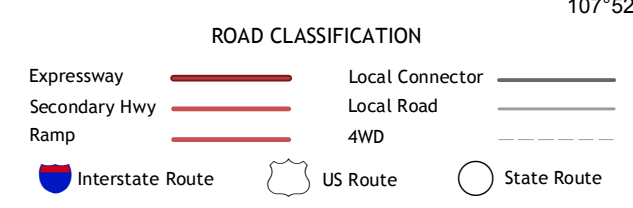
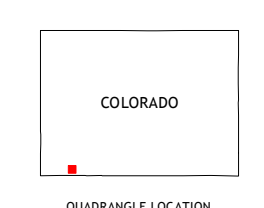
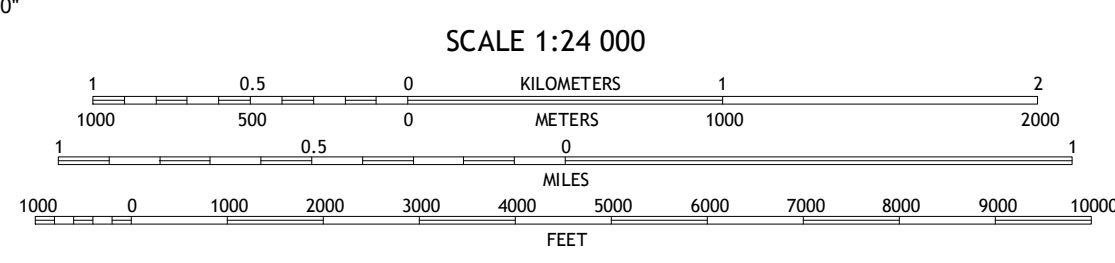
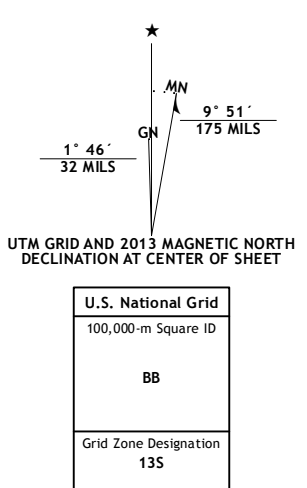
U.S. DEPARTMENT OF THE INTERIOR  
U. S. GEOLOGICAL SURVEY



BASIN MOUNTAIN QUADRANGLE  
COLORADO-LA PLATA CO.  
7.5-MINUTE SERIES



Produced by the United States Geological Survey  
North American Datum of 1983 (NAD83)  
World Geodetic System of 1984 (WGS84). Projection and  
1:000-meter grid: Universal Transverse Mercator, Zone 13S  
10 000-foot ticks: Colorado Coordinate System of 1983 (south  
zone)



Imagery.....NAIP, August 2011  
Roads.....©2006-2012, TomTom  
Names.....GNIS, 2013  
Hydrography.....National Hydrography Dataset, 2011  
Contours.....National Elevation Dataset, 2004  
Boundaries, IBWC, IBC, USGS, 1972 - 2012  
Public Land Survey System.....BLM, 2011

U.S. National Grid 100,000-m Square ID	BB
Grid Zone Designation	13S

CONTOUR INTERVAL 40 FEET  
NORTH AMERICAN VERTICAL DATUM OF 1988  
This map was produced to conform with the  
National Geospatial Program US Topo Product Standard, 2011.  
A metadata file associated with this product is draft version 0.6.14

QUADRANGLE LOCATION

Hesperus	Durango West	Durango East
Kiline	Basin Mountain	Loma Linda
Pinkerton Mesa	Long Mountain	Bondad Hill

BASIN MOUNTAIN, CO  
2013

ADJOINING 7.5 QUADRANGLES