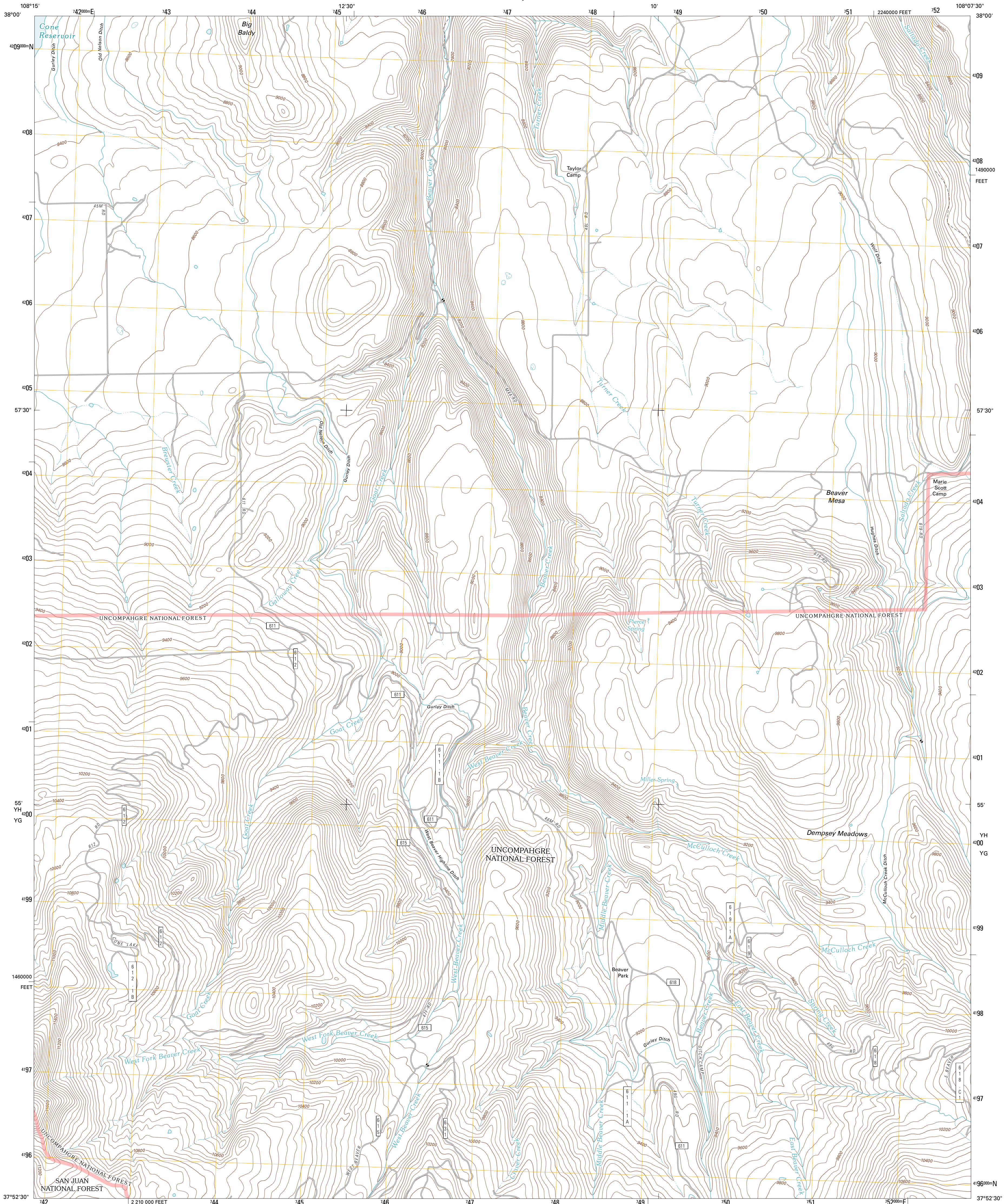




U.S. DEPARTMENT OF THE INTERIOR
U. S. GEOLOGICAL SURVEY

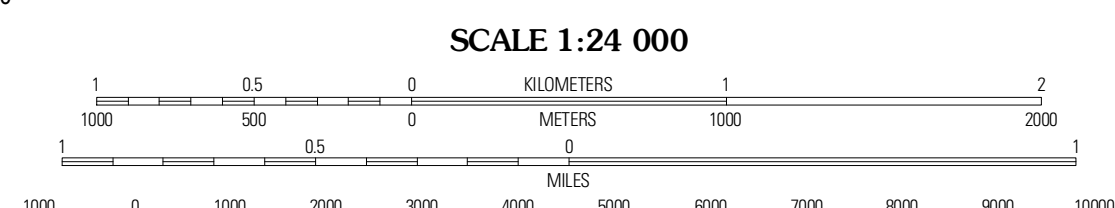
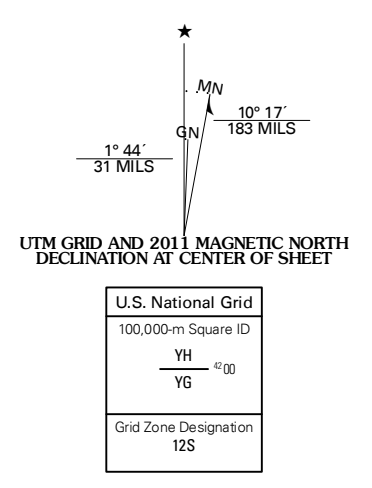


BEAVER PARK QUADRANGLE
COLORADO
7.5-MINUTE SERIES



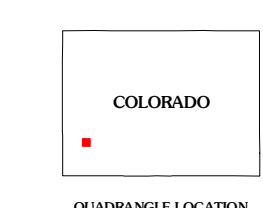
Produced by the United States Geological Survey
North American Datum of 1983 (NAD83)
World Geodetic System of 1984 (WGS84). Projection and
1 000-meter grid. Universal Transverse Mercator, Zone 12S
10 000-foot ticks. Colorado Coordinate System of 1983
(south zone)

Imagery: NIP, July 2009
Roads: ©2006-2010 Tele Atlas
Roads within US Forest Service Lands: FSTopo Data
with limited Forest Service updates, 2009
Names: GNS, 2010
Hydrography: National Hydrography Dataset, 2009
Contours: National Elevation Dataset, 2006



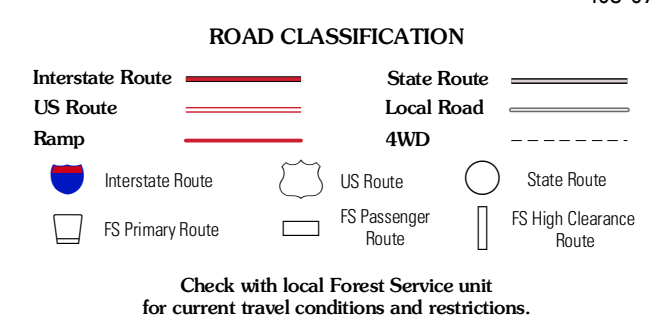
CONTOUR INTERVAL 40 FEET
NORTH AMERICAN VERTICAL DATUM OF 1988

This map was produced to conform with version 0.5.10 of the
draft USGS Standards for 7.5-Minute Quadrangle Maps.
A metadata file associated with this product is draft version 0.5.12



Oak 1BB	Gurley Canyon	Placerville
Lone Cone	Beaver Park	Little Cone
Groundhog Reservoir	Groundhog Mountain	Dolores Peak

ADJOINING 7.5' QUADRANGLES



BEAVER PARK, CO
2011