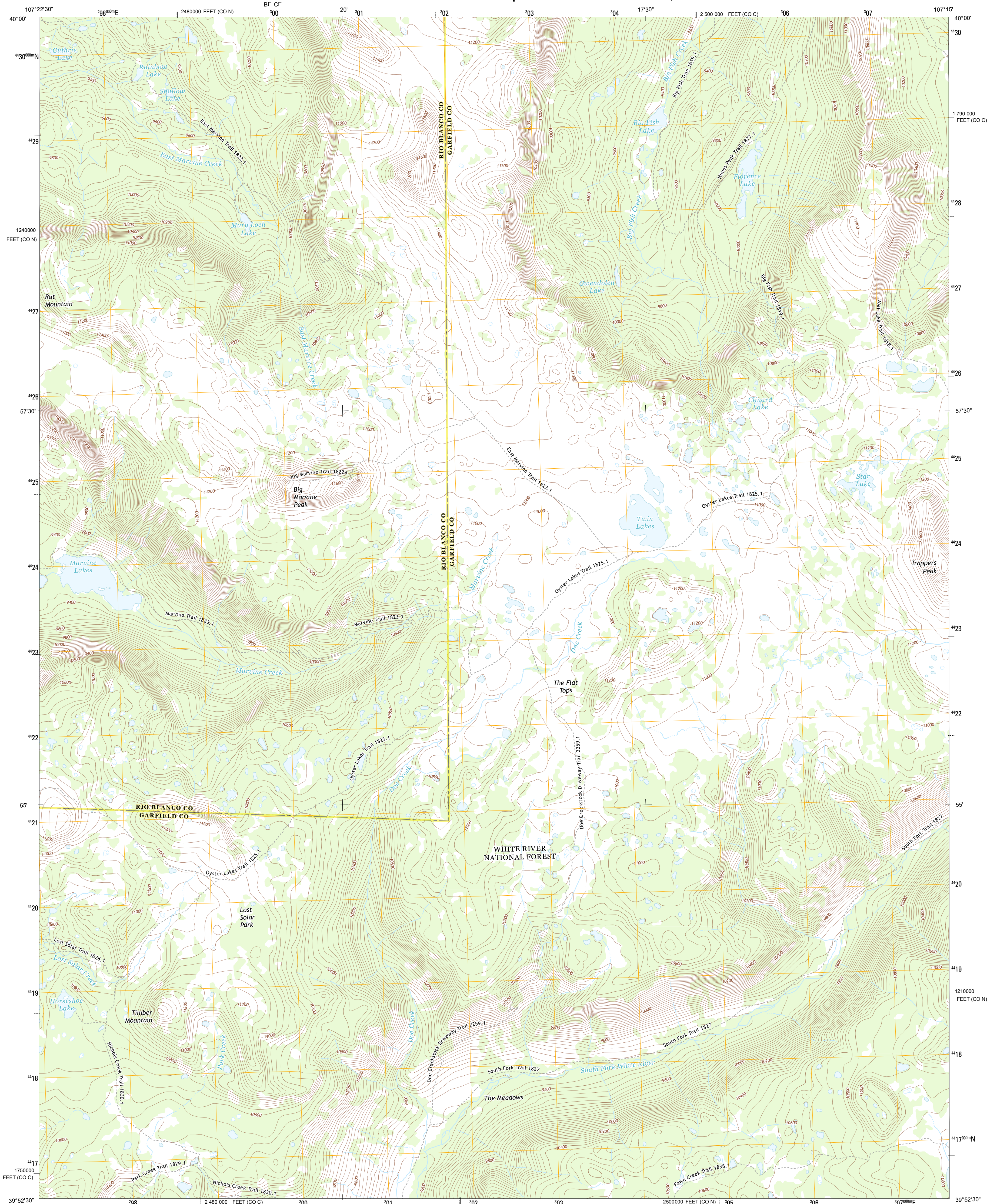




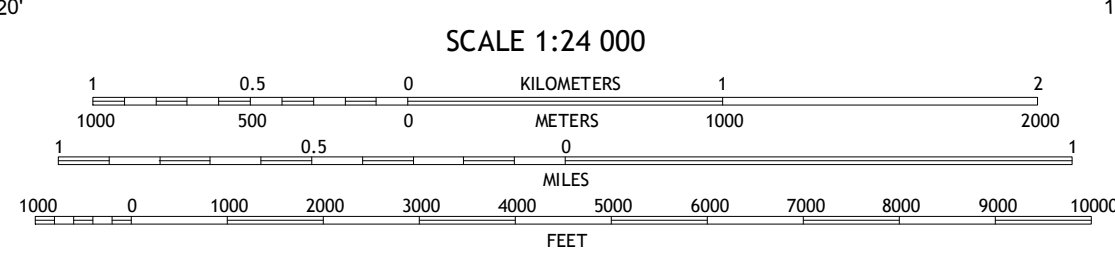
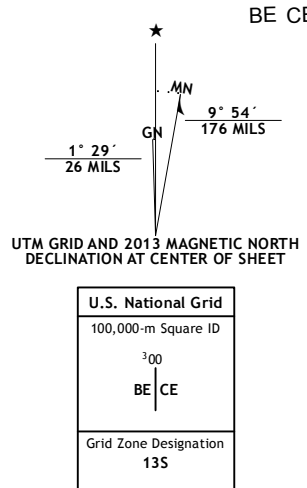
U.S. DEPARTMENT OF THE INTERIOR
U. S. GEOLOGICAL SURVEY



BIG MARVINE PEAK QUADRANGLE
COLORADO
7.5-MINUTE SERIES



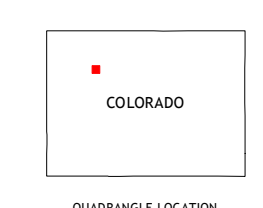
Produced by the United States Geological Survey
North American Datum of 1983 (NAD83)
World Geodetic System of 1984 (WGS84). Projection and
1:100,000 scale grid: Universal Transverse Mercator, Zone 13S
10 000-foot ticks: Colorado Coordinate System of 1983 (central
and north zones)



CONTOUR INTERVAL 40 FEET
NORTH AMERICAN VERTICAL DATUM OF 1988

This map was produced to conform with the
National Geospatial Program US Topo Product Standard, 2011.
A metadata file associated with this product is draft version 0.6.14

Imagery.....NAIP, July 2011
Roads.....©2006-2012 TomTom
Roads within US Forest Service Lands.....FS Topo Data
with limited Forest Service updates, 2013
Names.....GNIS, 2013
Hydrography.....National Hydrography Dataset, 2011
Contours.....National Elevation Dataset, 2004
Boundaries.....Census, IBWC, IBC, USGS, 1972 - 2012
Public Land Survey System.....BLM, 2011



QUADRANGLE LOCATION

Lost Park	Ripple Creek	Devils Causeway
Oyster Lake	Big Marvine Peak	Trappers Lake
Blair Mountain	Deep Lake	Sweetwater Lake

ROAD CLASSIFICATION

Expressway	Local Connector
Secondary Hwy	Local Road
Ramp	4WD
Interstate Route	US Route
FS Primary Route	FS Passenger Route
	FS High Clearance Route

Check with local Forest Service unit for current travel conditions and restrictions.

BIG MARVINE PEAK, CO
2013

ADJOINING 7.5' QUADRANGLES