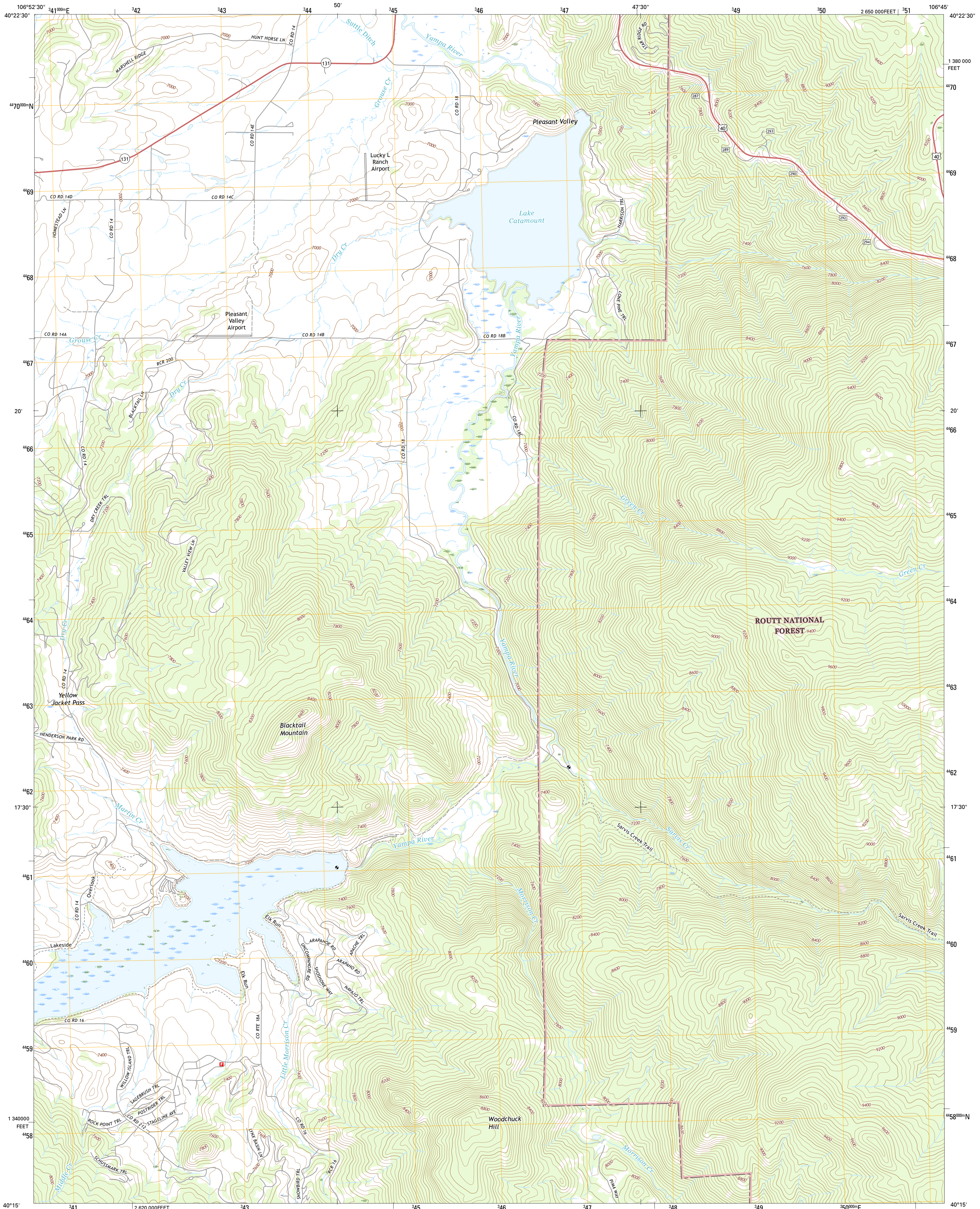




U.S. DEPARTMENT OF THE INTERIOR  
U.S. GEOLOGICAL SURVEY



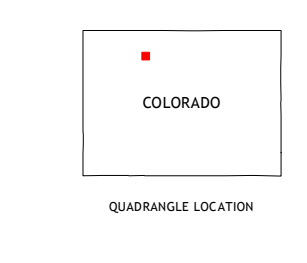
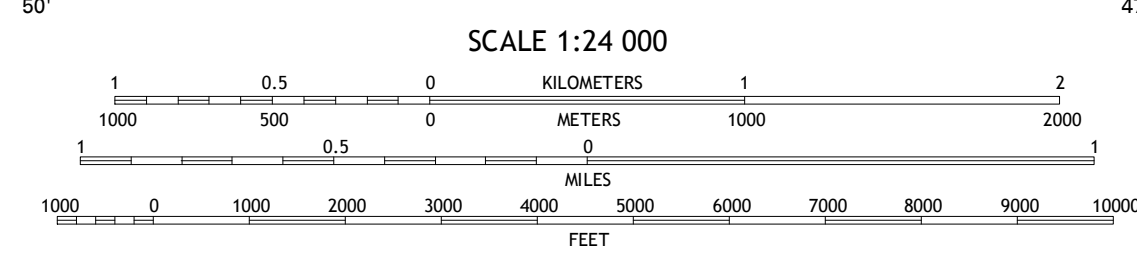
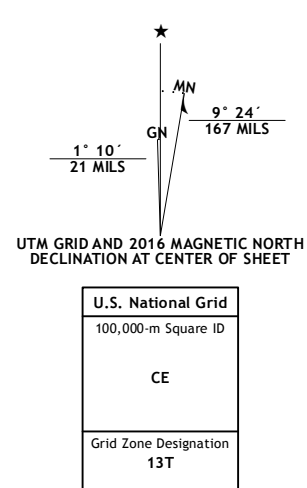
BLACKTAIL MOUNTAIN QUADRANGLE  
COLORADO-ROUTT CO.  
7.5-MINUTE SERIES



**Produced by the United States Geological Survey**  
North American Datum of 1983 (NAD83)  
World Geodetic System of 1984 (WGS84), Projection and  
1 000-meter grid: Universal Transverse Mercator, Zone 13T  
10 000-foot ticks: Colorado Coordinate System of 1983 (north  
zone)

This map is not a legal document. Boundaries may be  
generalized for this map scale. Private lands within government  
reservations may not be shown. Obtain permission before  
entering private lands.

Imagery:.....NAIP, July 2013  
Roads:.....U.S. Census Bureau, 2015 - 2016  
Roads within US Forest Service Lands:.....FS Topo Data  
with limited Forest Service updates, 2012 - 2016  
Names:.....GNIS, 2016  
Hydrography:.....National Hydrography Dataset, 2013  
Contours:.....National Elevation Dataset, 2004  
Boundaries:.....Multiple sources; see metadata file 1972 - 2016  
Public Land Survey System:.....BLM, 2011  
Wetlands:.....FWS National Wetlands Inventory 1977 - 2014



**ROAD CLASSIFICATION**

Expressway	Local Connector
Secondary Hwy	Local Road
Ramp	4WD
Interstate Route	US Route
FS Primary Route	FS Passenger Route
	FS High Clearance Route
	State Route

Check with local Forest Service unit  
for current travel conditions and restrictions.

1	2	3
4	5	6
7	8	

ADJOINING QUADRANGLES

1 Cow Creek  
2 Steamboat Springs  
3 Mount Werner  
4 Oak Creek  
5 Walton Peak  
6 Yampa  
7 Green Ridge  
8 Gore Mountain

**BLACKTAIL MOUNTAIN, CO**  
2016

