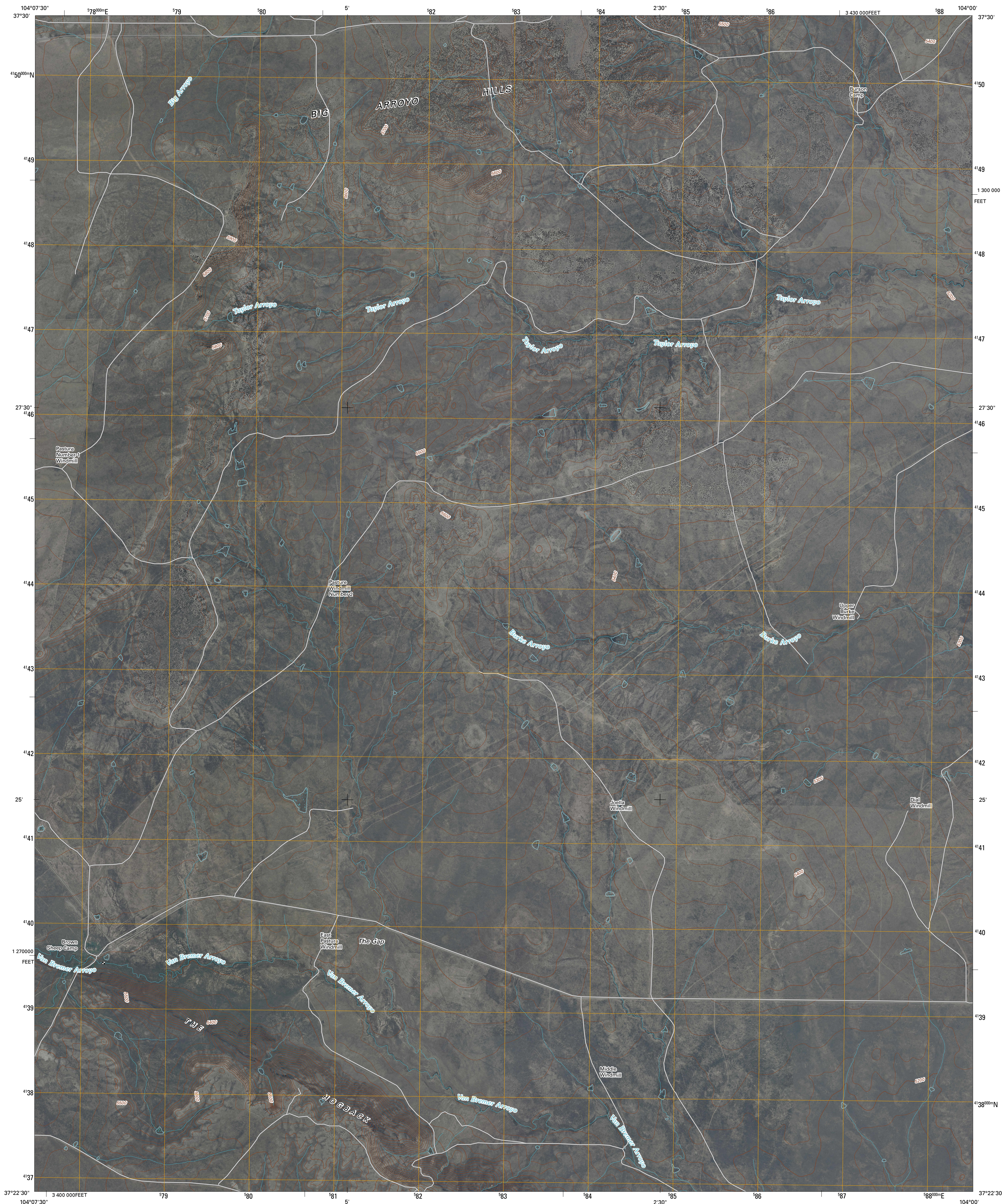




U.S. DEPARTMENT OF THE INTERIOR
U. S. GEOLOGICAL SURVEY

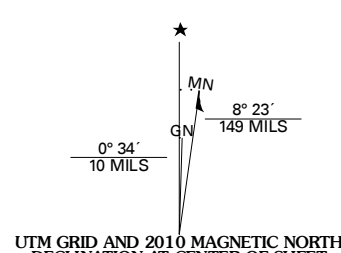


BROWN SHEEP CAMP QUADRANGLE
COLORADO
7.5-MINUTE SERIES

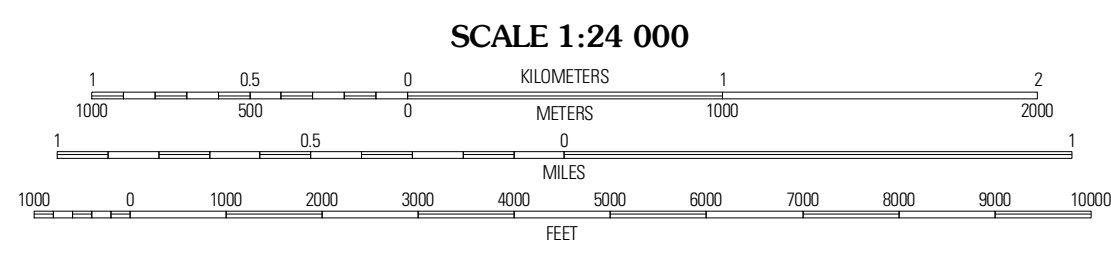


Produced by the United States Geological Survey
North American Datum of 1983 (NAD83)
World Geodetic System of 1984 (WGS84). Projection and
1 000-meter grid; Universal Transverse Mercator, Zone 13S
10 000-foot ticks; Colorado Coordinate System of 1983
(south zone)

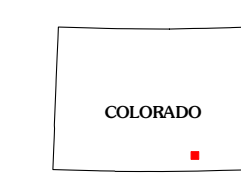
Imagery.....NAIP, June 2009
Roads.....62006-2010 Tole Atlas
Names.....GNIS, 2008
Hydrography.....National Hydrography Dataset, 2009
Contours.....National Elevation Dataset, 2005



U.S. National Grid	13S
100,000m Square ID	EB
Grid Zone Designation	13S



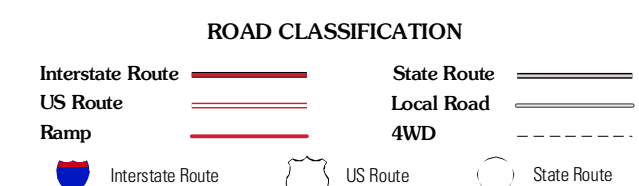
CONTOUR INTERVAL 20 FEET
NORTH AMERICAN VERTICAL DATUM OF 1988
This map was produced to conform with version 0.5.10 of the
draft USGS Standards for 7.5-Minute Quadrangle Maps.
A metadata file associated with this product is draft version 0.5.11



QUADRANGLE LOCATION

Bates Lake	Thatcher	Lockwood Arroyo
Tyrene	Brown Sheep Camp	Rock Crossing
Model	Lambing Spring	Painted Canyon

ADJOINING 7.5 QUADRANGLES



BROWN SHEEP CAMP, CO
2010