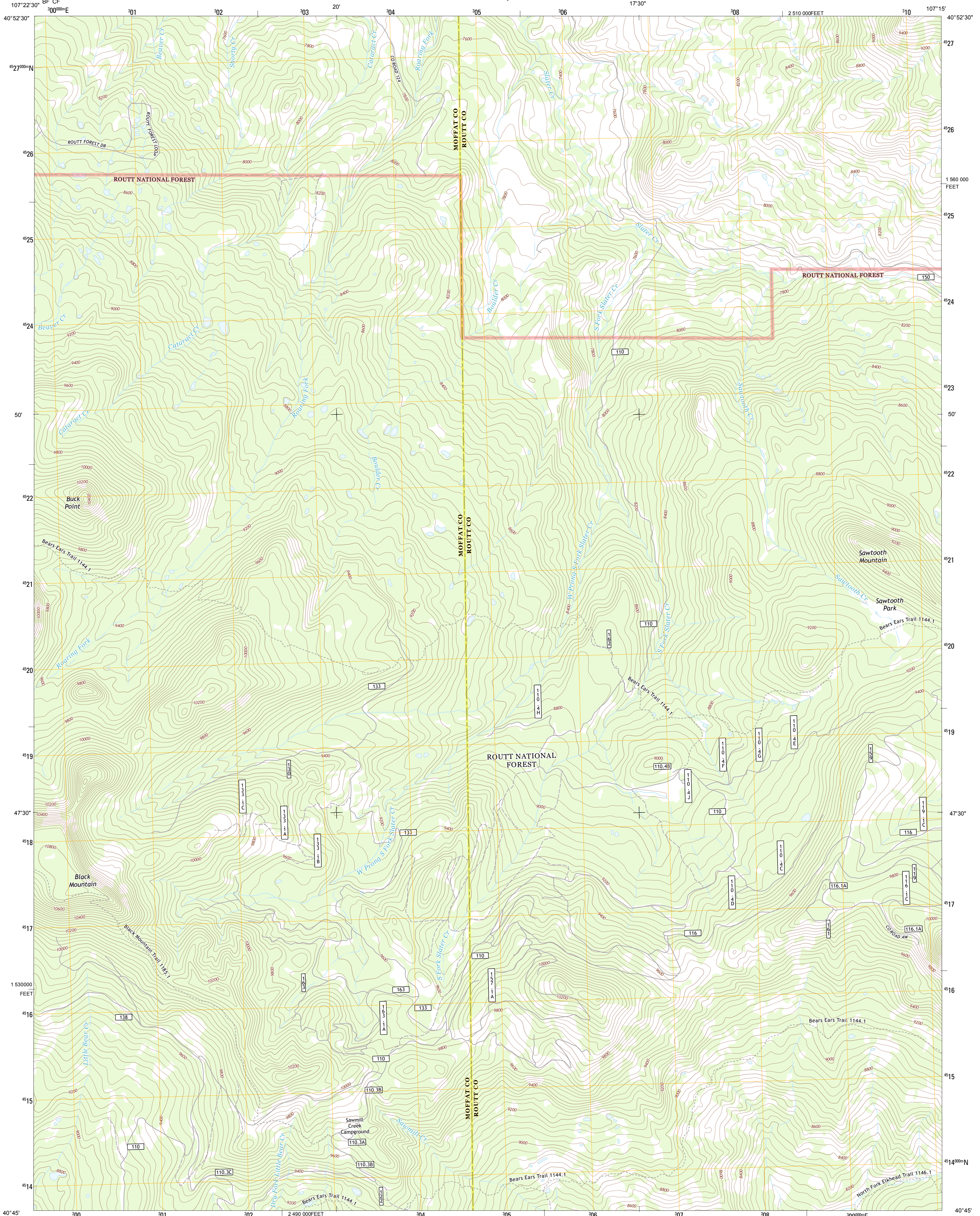




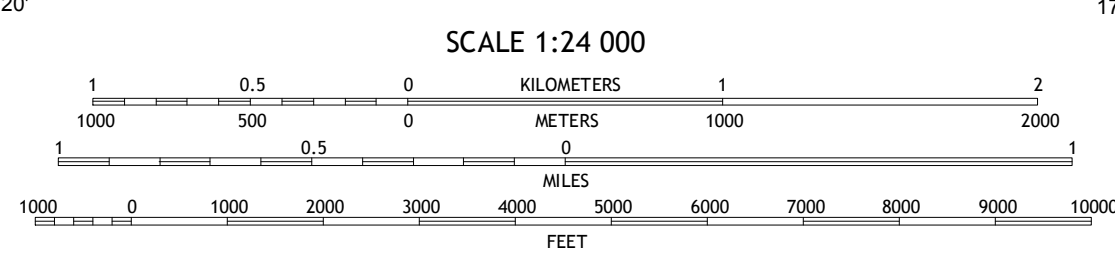
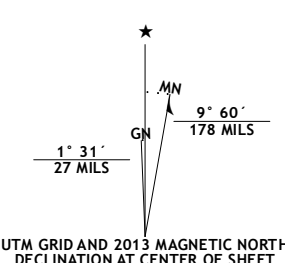
U.S. DEPARTMENT OF THE INTERIOR
U. S. GEOLOGICAL SURVEY



BUCK POINT QUADRANGLE
COLORADO
7.5-MINUTE SERIES



Produced by the United States Geological Survey
North American Datum of 1983 (NAD83)
World Geodetic System of 1984 (WGS84), Projection and
1 000-meter grid: Universal Transverse Mercator, Zone 13T
10 000-foot ticks: Colorado Coordinate System of 1983 (north
zone)



CONTOUR INTERVAL 40 FEET
NORTH AMERICAN VERTICAL DATUM OF 1988
This map was produced to conform with the
National Geospatial Program US Topo Product Standard, 2011.
A metadata file associated with this product is draft version 0.6.14

COLORADO

QUADRANGLE LOCATION

Bakers Peak	Fly Creek	Tumble Mountain
Freeman Reservoir	Buck Point	Bears Ears Peaks
McInturf Mesa	Slide Mountain	Quaker Mountain

ADJOINING 7.5 QUADRANGLES

ROAD CLASSIFICATION

- Expressway
- Secondary Hwy
- Ramp
- Interstate Route
- FS Primary Route
- Local Connector
- Local Road
- 4WD
- US Route
- FS Passenger Route
- FS High
- State Route
- Clearance Route

Check with local Forest Service unit for current travel conditions and restrictions.

BUCK POINT, CO
2013

Imagery.....N.A.I.P., July 2011
Roads.....©2006-2012, TomTom
Roads within US Forest Service Lands.....FSTopo Data
with limited Forest Service updates, 2013
Names.....©GNS, 2013
Hydrography.....National Hydrography Dataset, 2011
Contours.....National Elevation Dataset, 2003
Boundaries.....Census, IBWC, IBC, USGS, 1972 - 2012
Public Land Survey System.....BLM, 2011