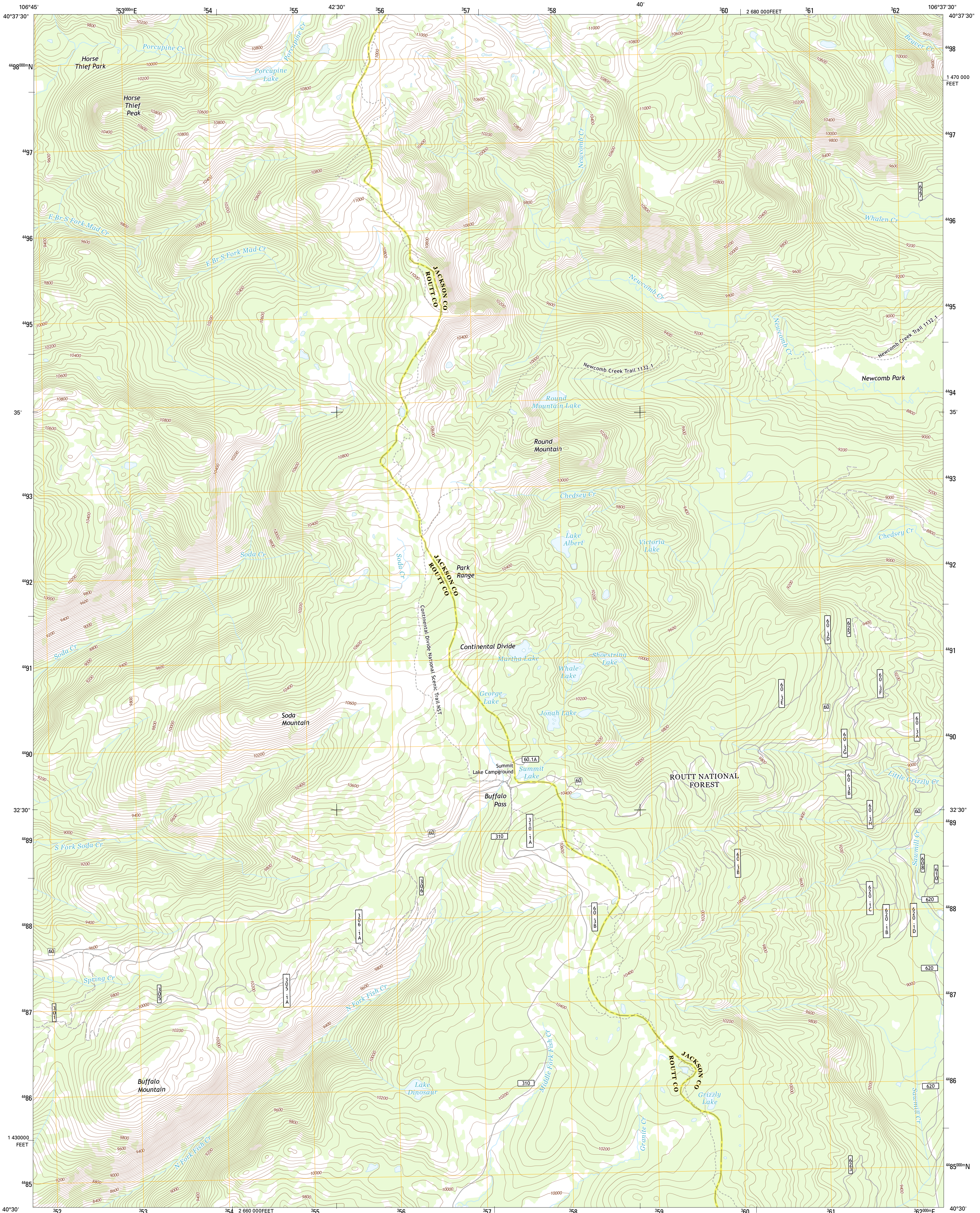




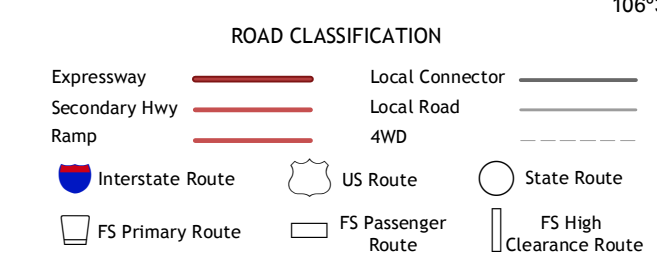
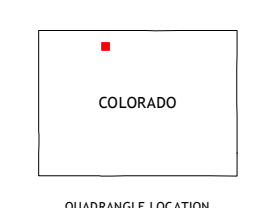
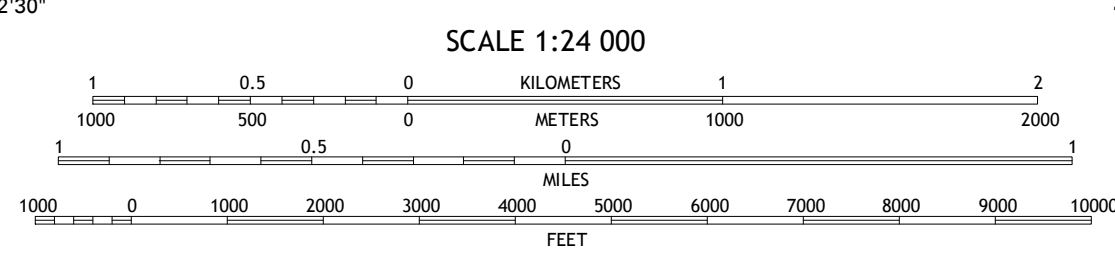
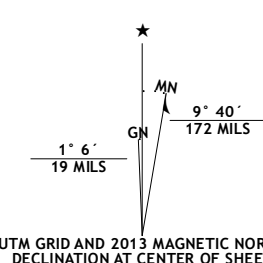
U.S. DEPARTMENT OF THE INTERIOR
U. S. GEOLOGICAL SURVEY



BUFFALO PASS QUADRANGLE
COLORADO
7.5-MINUTE SERIES



Produced by the United States Geological Survey
North American Datum of 1983 (NAD83)
World Geodetic System of 1984 (WGS84) Projection and
1 000-meter grid; Universal Transverse Mercator, Zone 13T
10 000-foot ticks; Colorado Coordinate System of 1983 (north zone)



Imagery.....N.A.I.P., July 2011
Roads.....©2006-2012, TomTom
Roads within US Forest Service Lands.....FS Topo Data with limited Forest Service updates, 2013
Names.....GNIS, 2013
Hydrography.....National Hydrography Dataset, 2011
Contours.....National Elevation Dataset, 2004
Boundaries.....Census, IBC, USGS, 1972 - 2012
Public Land Survey System.....BLM, 2011

U.S. National Grid	100,000-m Square ID
CE	
Grid Zone Designation	13T

CONTOUR INTERVAL 40 FEET
NORTH AMERICAN VERTICAL DATUM OF 1988

This map was produced to conform with the National Geospatial Program US Topo Product Standard, 2011. A metadata file associated with this product is draft version 0.6.14

QUADRANGLE LOCATION

Floyd Peak	Mount Ethel	Pitchpine Mountain
Rocky Peak	Buffalo Pass	Teal Lake
Steamboat Springs	Mount Werner	Rabbit Ears Peak

Check with local Forest Service unit for current travel conditions and restrictions.

BUFFALO PASS, CO
2013

ADJOINING 7.5 QUADRANGLES