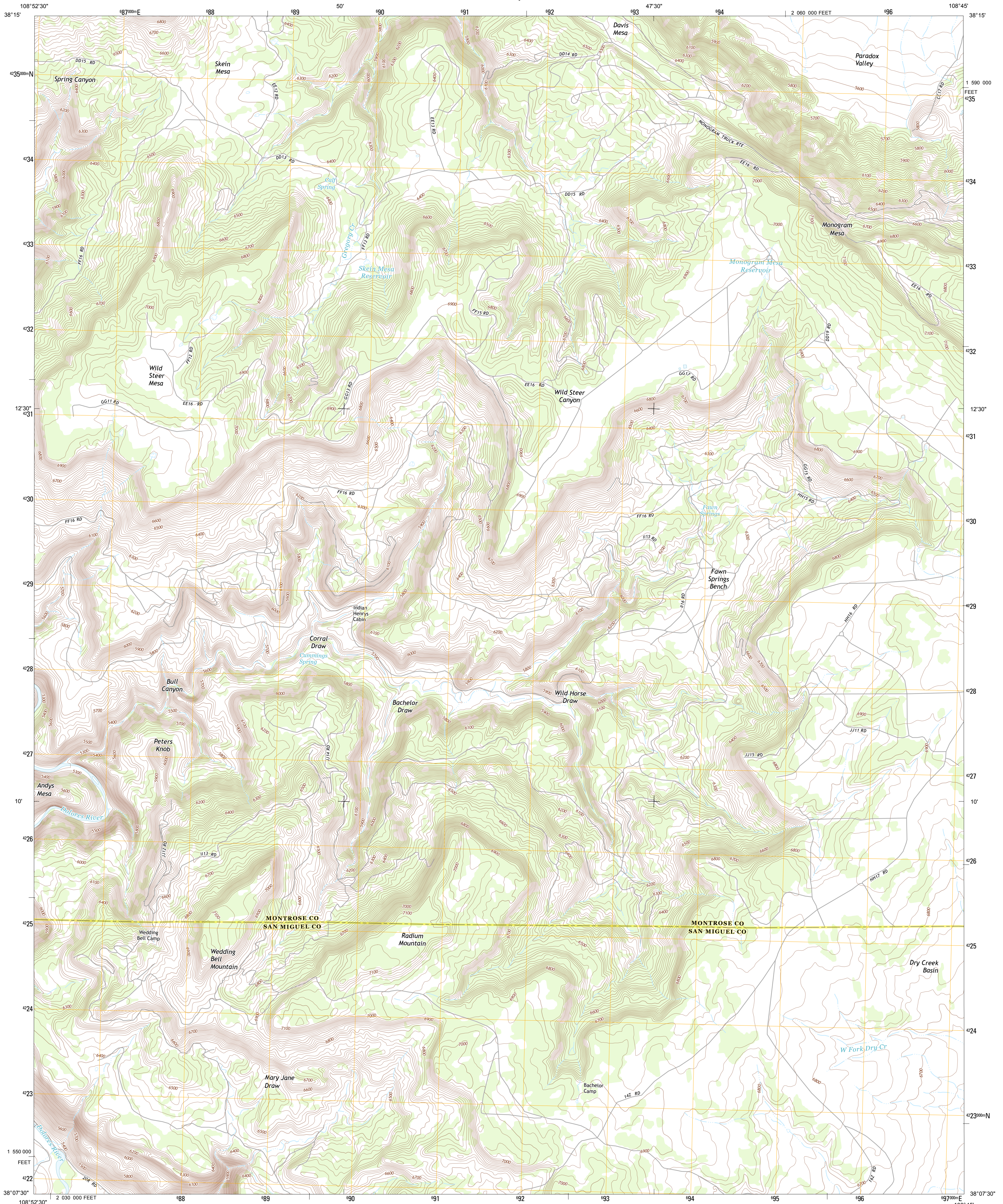




U.S. DEPARTMENT OF THE INTERIOR
U. S. GEOLOGICAL SURVEY

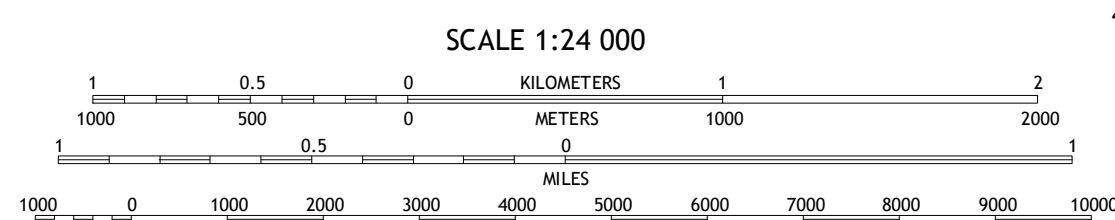
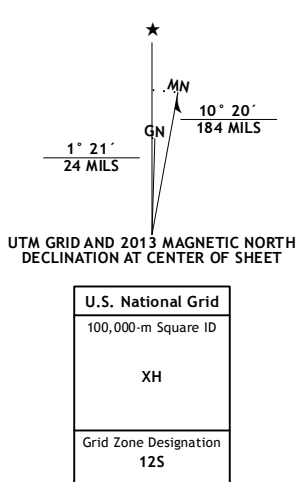


BULL CANYON QUADRANGLE
COLORADO
7.5-MINUTE SERIES



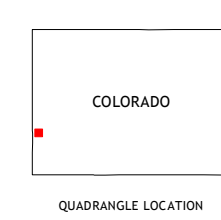
Produced by the United States Geological Survey
North American Datum of 1983 (NAD83)
World Geodetic System of 1984 (WGS84)
1:000-meter grid; Universal Transverse Mercator, Zone 12S
10 000-foot ticks; Colorado Coordinate System of 1983 (south zone)

Imagery.....NAIP, July 2011 - September 2011
Roads.....©2006-2012 TomTom
Names.....GNS, 2013
Hydrography.....National Hydrography Dataset, 2011
Contours.....National Elevation Dataset, 2005
Boundaries, BWC, BIC, USGS, 1972 - 2012
Public Land Survey System.....BLM, 2011



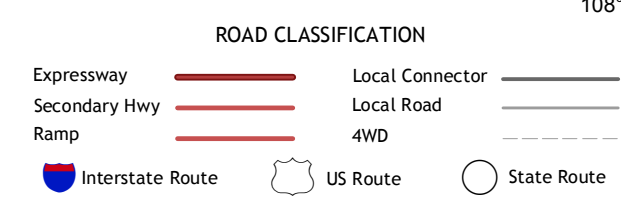
CONTOUR INTERVAL 20 FEET
NORTH AMERICAN VERTICAL DATUM OF 1988

This map was produced to conform with the National Geospatial Program US Topo Product Standard, 2011. A metadata file associated with this product is draft version 0.6.14



QUADRANGLE LOCATION

Paradox Mesa	Davis Mesa	Uravan
Anderson Mesa	Bull Canyon	Naturita NW
Horse Range Mesa	Humm Canyon	Gypsum Gap



BULL CANYON, CO
2013

ADJOINING 7.5 QUADRANGLES