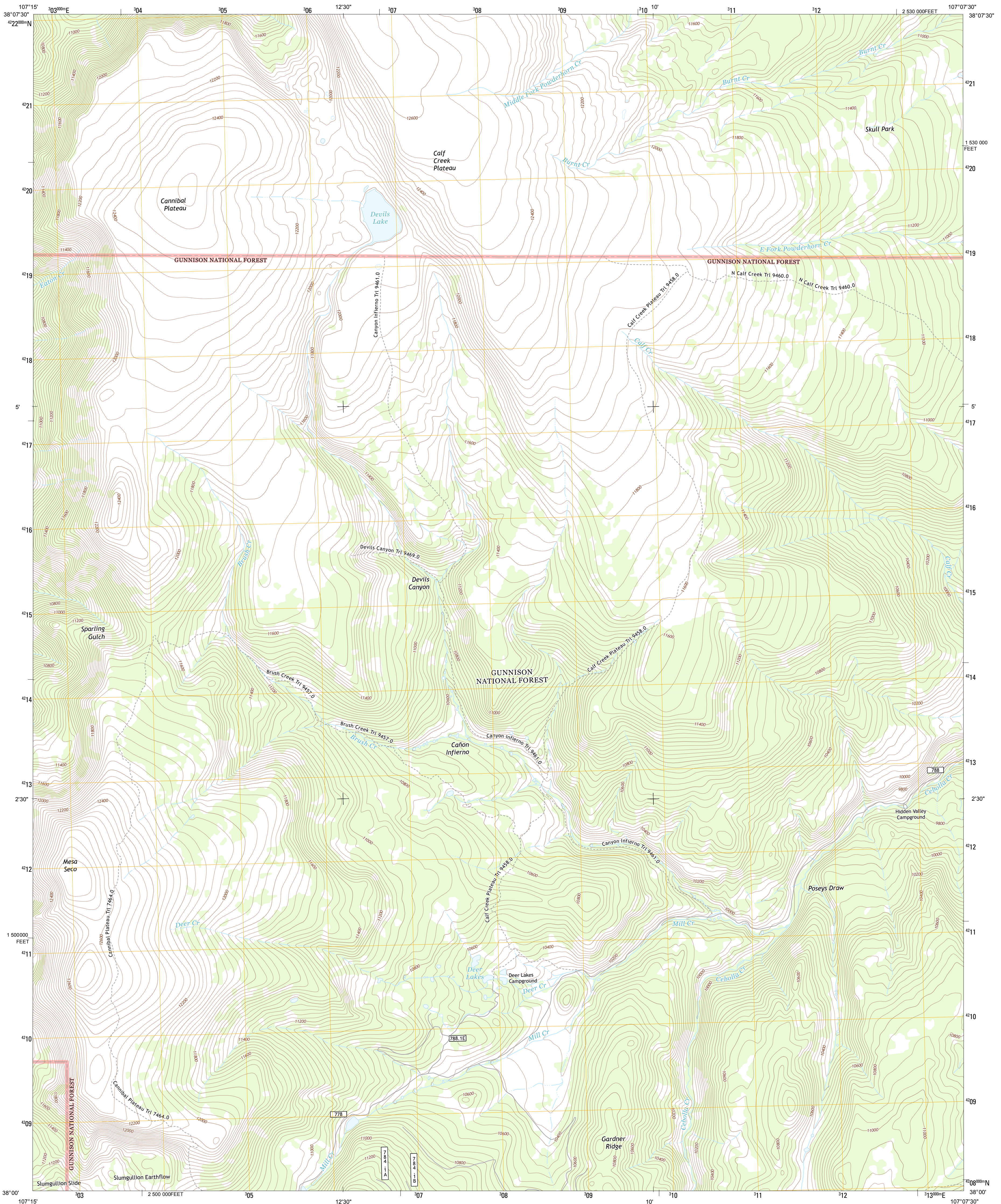




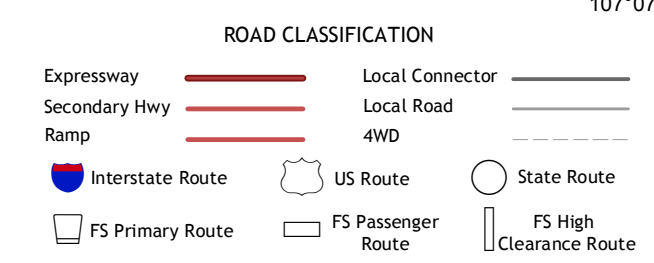
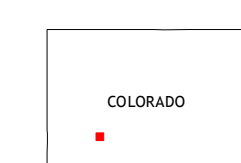
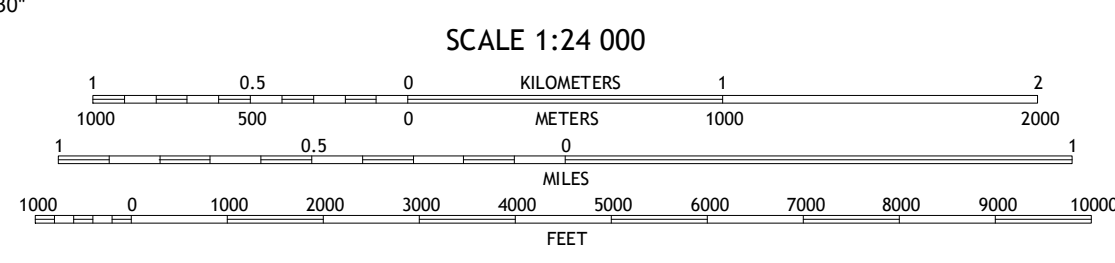
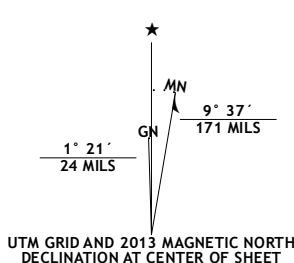
U.S. DEPARTMENT OF THE INTERIOR  
U. S. GEOLOGICAL SURVEY



CANNIBAL PLATEAU QUADRANGLE  
COLORADO-HINSDALE CO.  
7.5-MINUTE SERIES



Produced by the United States Geological Survey  
North American Datum of 1983 (NAD83)  
World Geodetic System of 1984 (WGS84) Projection and  
1 000-meter grid: Universal Transverse Mercator, Zone 13S  
10 000-foot ticks: Colorado Coordinate System of 1983 (south zone)



Imagery.....NAIP, August 2011  
Roads.....©2006-2012, TomTom  
Roads within US Forest Service Lands with limited Forest Service updates, 2013  
Names.....GNIS, 2013  
Hydrography.....National Hydrography Dataset, 2011  
Contours.....National Elevation Dataset, 2003  
Boundaries.....Census, IBWC, IBC, USGS, 1972 - 2012  
Public Land Survey System.....BLM, 2011

U.S. National Grid 100,000-m Square ID	CC
Grid Zone Designation	13S

CONTOUR INTERVAL 40 FEET  
NORTH AMERICAN VERTICAL DATUM OF 1988  
This map was produced to conform with the National Geospatial Program US Topo Product Standard, 2011. A metadata file associated with this product is draft version 0.6.14

Alpine Plateau	Powderhorn Lakes	Rudolph Hill
Lake City	Cannibal Plateau	Mineral Mountain
Lake San Cristobal	Slungullion Pass	Baldy Cinco

CANNIBAL PLATEAU, CO  
2013

ADJOINING 7.5 QUADRANGLES