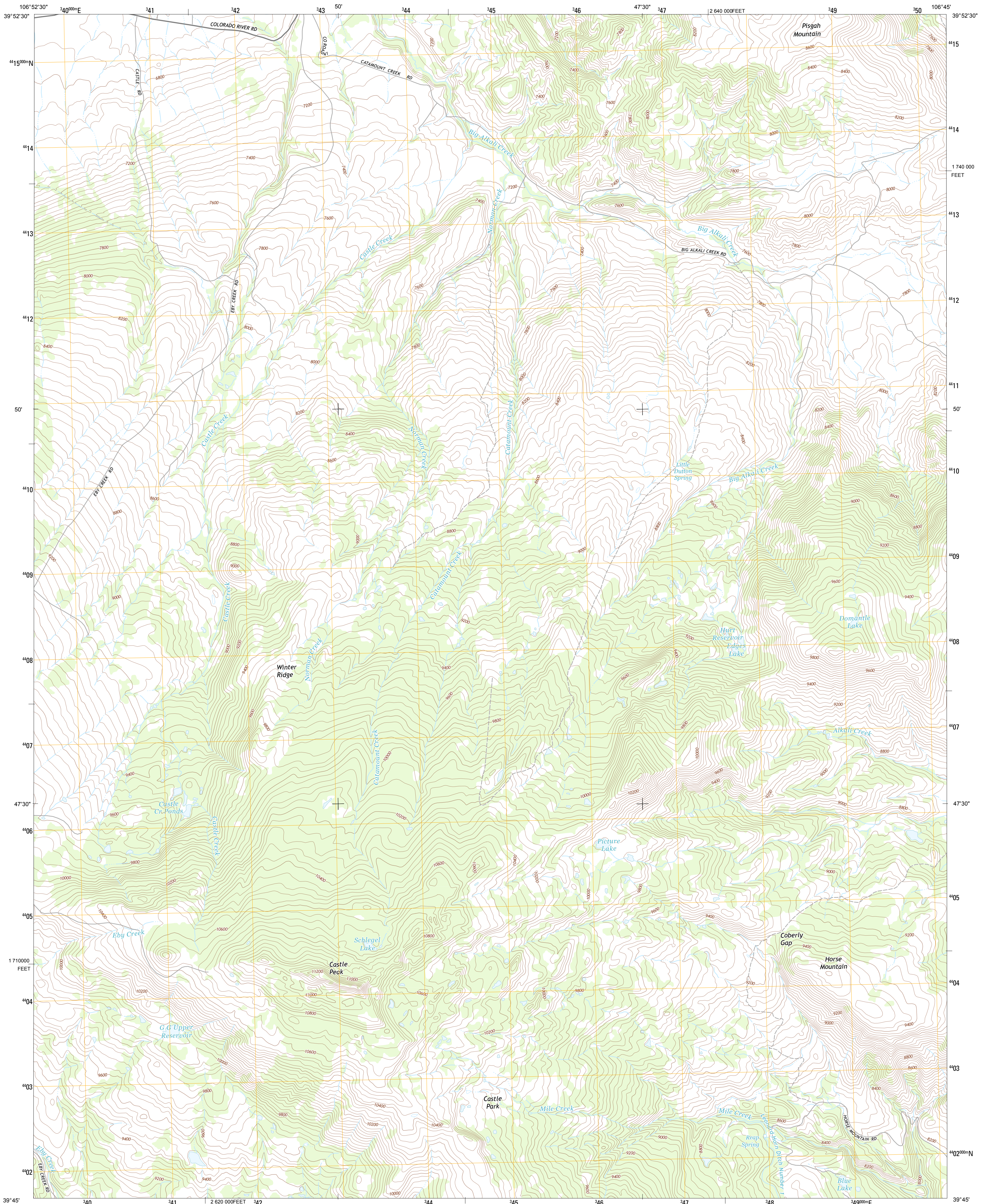




U.S. DEPARTMENT OF THE INTERIOR  
U. S. GEOLOGICAL SURVEY

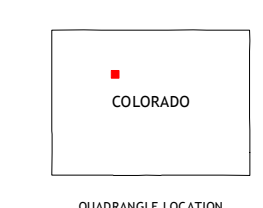
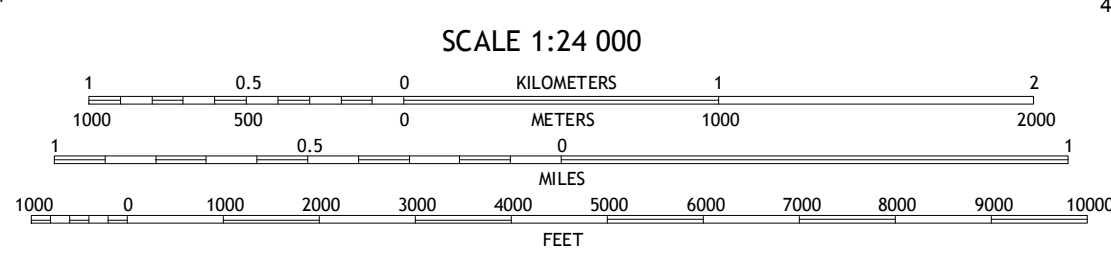
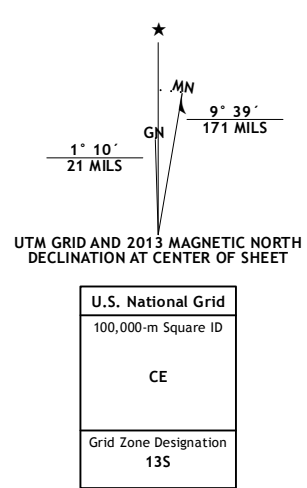


CASTLE PEAK QUADRANGLE  
COLORADO-EAGLE CO.  
7.5-MINUTE SERIES



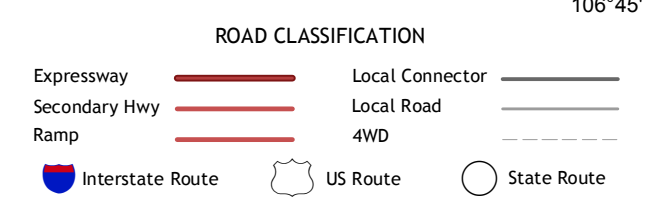
Produced by the United States Geological Survey  
North American Datum of 1983 (NAD83)  
World Geodetic System of 1984 (WGS84). Projection and  
1 000-meter grid: Universal Transverse Mercator, Zone 13S  
10 000-foot ticks: Colorado Coordinate System of 1983 (central  
zone)

Imagery.....NAIP, July 2011 - August 2011  
Roads.....©2006-2012 TomTom  
Names.....GNIS, 2013  
Hydrography.....National Hydrography Dataset, 2011  
Contours.....National Elevation Dataset, 2005  
Boundaries, IRW, B.C., USGS, 1972 - 2012  
Public Land Survey System.....BLM, 2011



QUADRANGLE LOCATION

Burns North	Blue Hill	McCoy
Burns South	Castle Peak	State Bridge
Gypsum	Eagle	Wolcott



CONTOUR INTERVAL 40 FEET  
NORTH AMERICAN VERTICAL DATUM OF 1988  
This map was produced to conform with the  
National Geospatial Program US Topo Product Standard, 2011.  
A metadata file associated with this product is draft version 0.6.14

CASTLE PEAK, CO  
2013

ADJOINING 7.5 QUADRANGLES