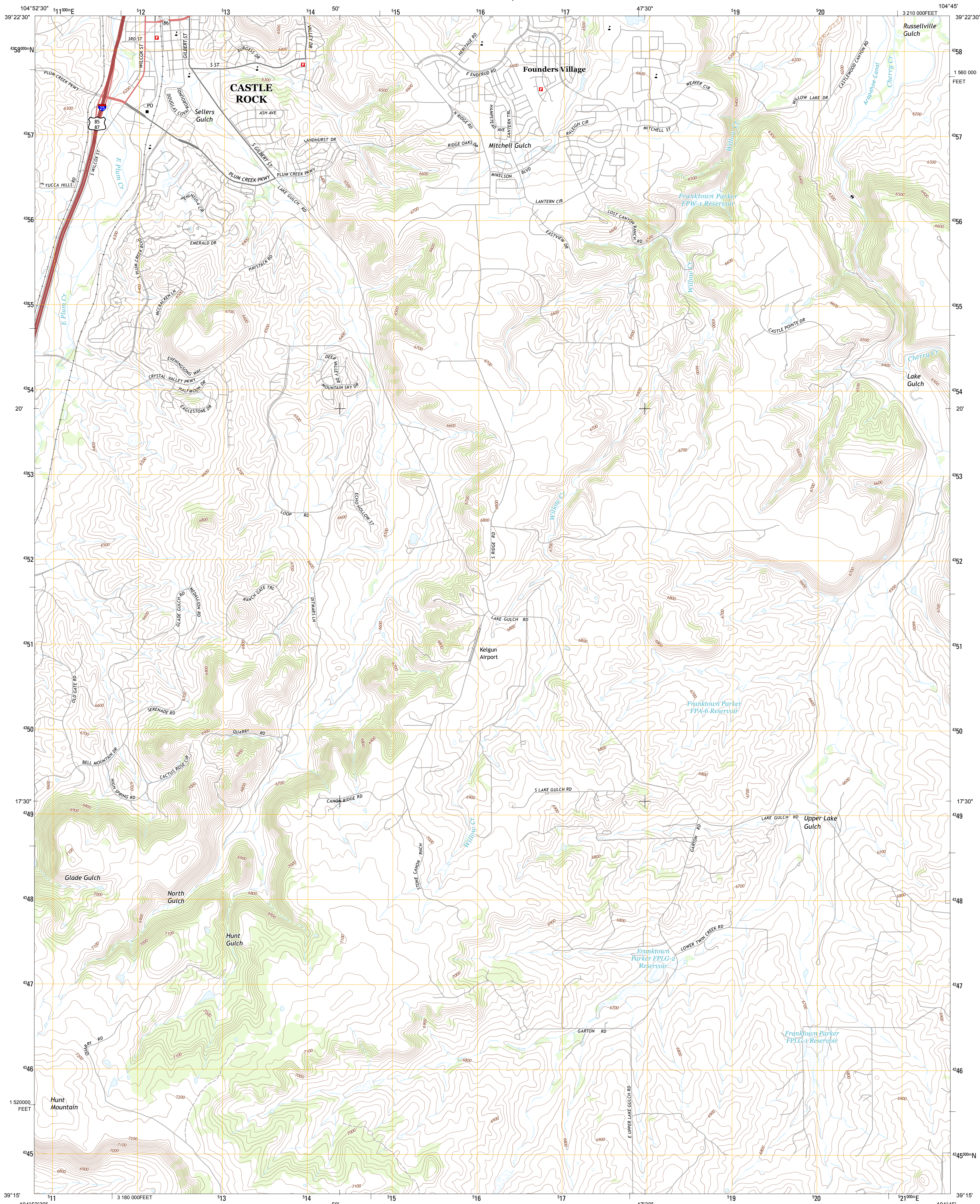




U.S. DEPARTMENT OF THE INTERIOR  
U. S. GEOLOGICAL SURVEY

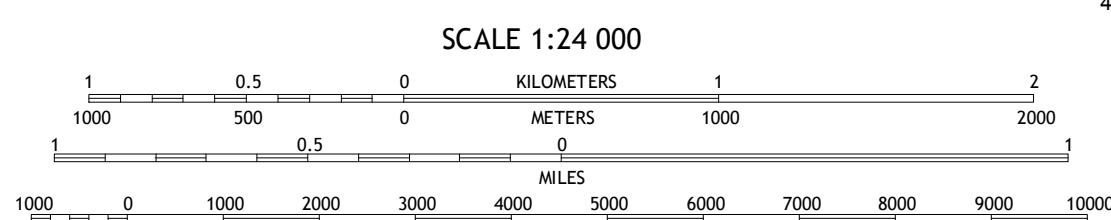
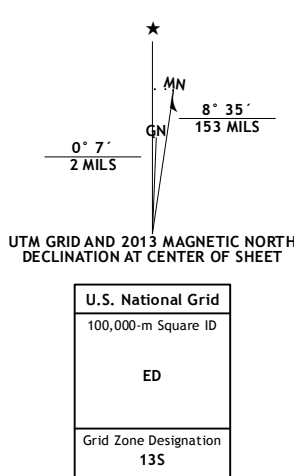


CASTLE ROCK SOUTH QUADRANGLE  
COLORADO-DOUGLAS CO.  
7.5-MINUTE SERIES



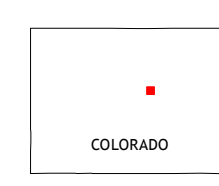
Produced by the United States Geological Survey  
North American Datum of 1983 (NAD83)  
World Geodetic System of 1984 (WGS84) Projection and  
1 000-meter grid: Universal Transverse Mercator, Zone 13S  
10 000-foot ticks: Colorado Coordinate System of 1983 (central zone)

Imagery.....NAIP, July 2011  
Roads.....©2006-2012 TomTom  
Names.....GNIS, 2013  
Hydrography.....National Hydrography Dataset, 2011  
Contours.....National Elevation Dataset, 2003  
Boundaries.....B.C., 1952, 1972 - 2012  
Public Land Survey System.....BLM, 2011



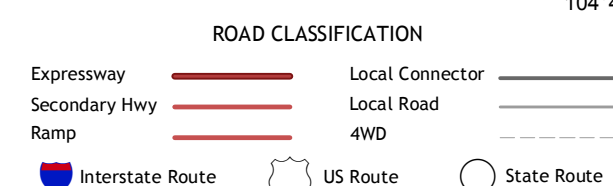
CONTOUR INTERVAL 20 FEET  
NORTH AMERICAN VERTICAL DATUM OF 1988

This map was produced to conform with the National Geospatial Program US Topo Product Standard, 2011. A metadata file associated with this product is draft version 0.6.14



QUADRANGLE LOCATION

Sedalia	Castle Rock North	Ponderosa Park
Dawson Butte	Castle Rock South	Russellville Gulch
Larkspur	Greenland	Cherry Valley School



CASTLE ROCK SOUTH, CO  
2013

ADJOINING 7.5 QUADRANGLES