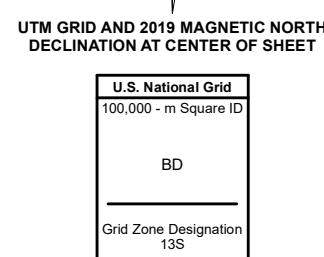
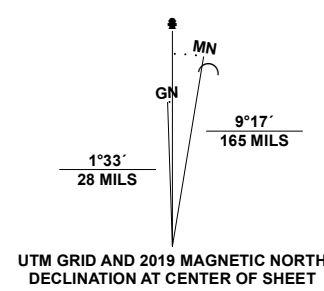


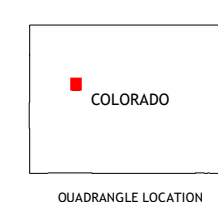
Produced by the United States Geological Survey

North American Datum of 1983 (NAD83)  
World Geodetic System of 1984 (WGS84). Projection and 1 000-meter grid: Universal Transverse Mercator, Zone 13S  
This map is not a legal document. Boundaries may be generalized for this map scale. Private lands within government reservations may not be shown. Obtain permission before entering private lands.

Imagery: NAIP, October 2017 - January 2018  
Roads: U.S. Census Bureau, 2016 - 2016  
Roads within US Forest Service with limited Forest Service updates, 2013  
Names: National Hydrography Dataset, 2002 - 2010  
Hydrography: National Hydrography Dataset, 2002 - 2010  
Contours: National Elevation Dataset, 2018  
Boundaries: Multiple sources; see metadata file 2017 - 2021  
Public Land Survey System: BLM, 2021  
Wetlands: FWS National Wetlands Inventory, 1983



CONTOUR INTERVAL 40 FEET  
NORTH AMERICAN VERTICAL DATUM OF 1988  
This map was produced to conform with the National Geospatial Program US Topo Product Standard.



ADJOINING QUADRANGLES

1	2	3
4	5	6
7	8	

- 1 New Castle
- 2 Storm King Mountain
- 3 Glenwood Springs
- 4 Gibson Gulch
- 5 Cattle Creek
- 6 Flatiron Mountain
- 7 Quaker Mesa
- 8 Stony Ridge

ROAD CLASSIFICATION

Expressway	Local Connector
Secondary Hwy	Local Road
Ramp	4WD
Interstate Route	US Route
FS Primary Route	FS Passenger Route
	FS High Clearance Route
	State Route

Check with local Forest Service unit for current travel conditions and restrictions.

CENTER MOUNTAIN, CO  
2022

