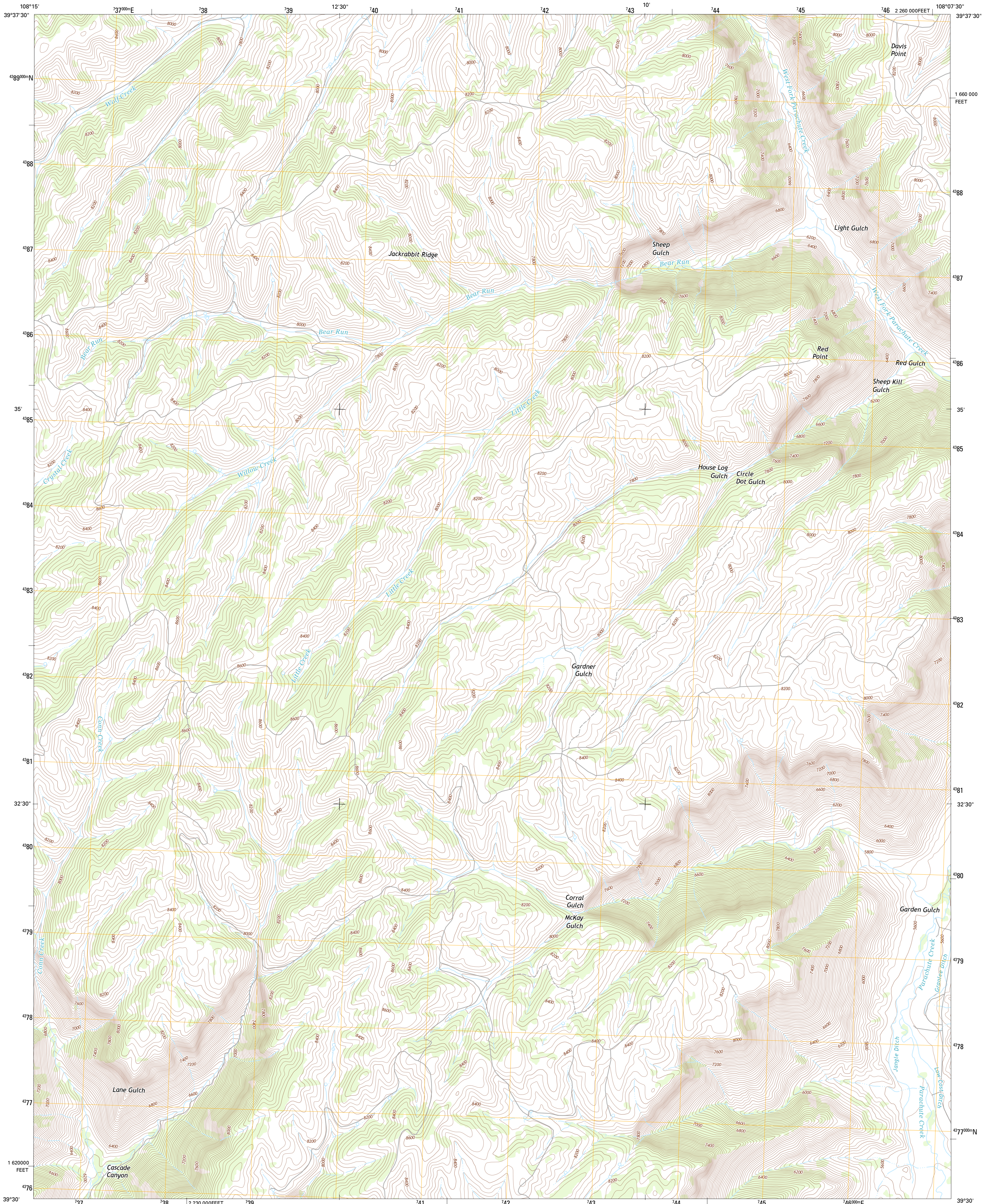




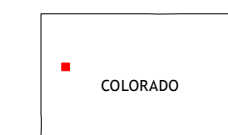
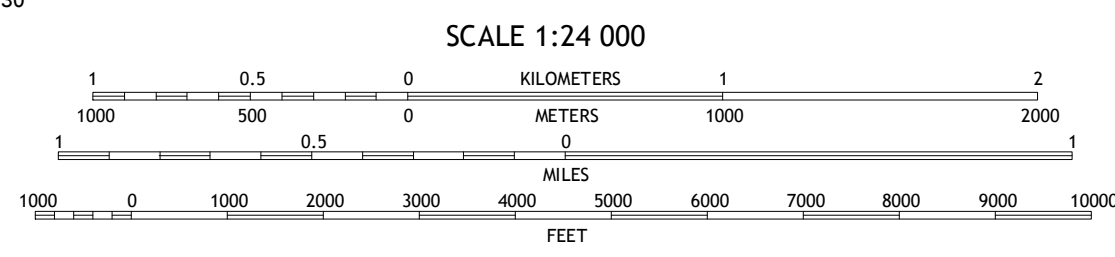
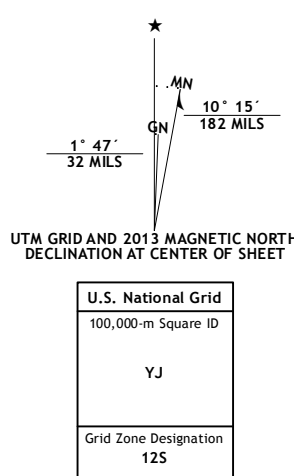
U.S. DEPARTMENT OF THE INTERIOR  
U. S. GEOLOGICAL SURVEY



CIRCLE DOT GULCH QUADRANGLE  
COLORADO-GARFIELD CO.  
7.5-MINUTE SERIES



Produced by the United States Geological Survey  
North American Datum of 1983 (NAD83)  
World Geodetic System of 1984 (WGS84). Projection and  
1000-meter grid: Universal Transverse Mercator, Zone 12S  
10 000-foot ticks: Colorado Coordinate System of 1983 (central  
zone)



QUADRANGLE LOCATION

Bull Fork	Cutoff Gulch	McCarthy Gulch
Mount Blaine	Circle Dot Gulch	Forked Gulch
Long Point	Red Pinnacle	Parachute

ROAD CLASSIFICATION

Expressway ——— Local Connector ———  
Secondary Hwy ——— Local Road ———  
Ramp ——— 4WD ———  
Interstate Route ——— US Route ———  
State Route ———

CIRCLE DOT GULCH, CO  
2013

CONTOUR INTERVAL 40 FEET  
NORTH AMERICAN VERTICAL DATUM OF 1988

This map was produced to conform with the  
National Geospatial Program US Topo Product Standard, 2011.  
A metadata file associated with this product is draft version 0.6.14

Imagery.....NAIP, July 2011  
Roads.....©2006-2012 TomTom  
Names.....GNS, 2013  
Hydrography.....National Hydrography Dataset, 2011  
Contours.....National Elevation Dataset, 2006  
Boundaries.....Census, BWC, BC, USGS, 1972-2012  
Public Land Survey System.....BLM, 2011

ADJOINING 7.5 QUADRANGLES