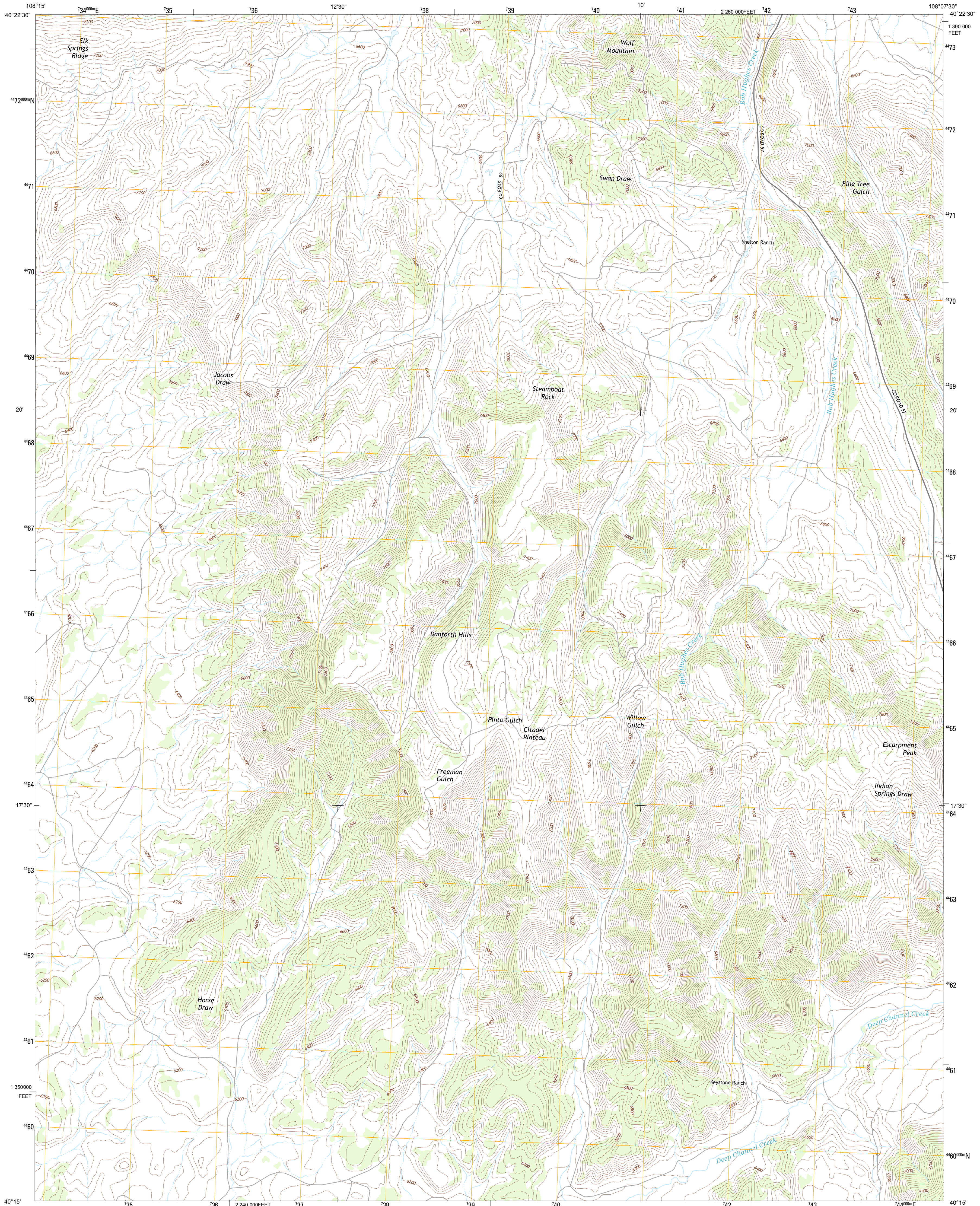




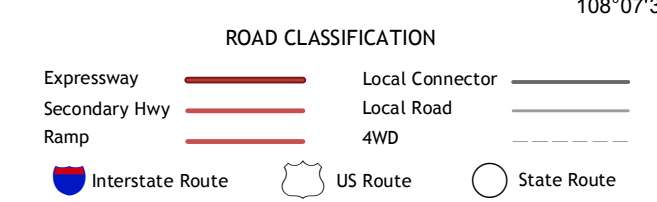
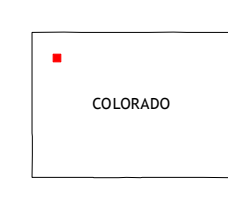
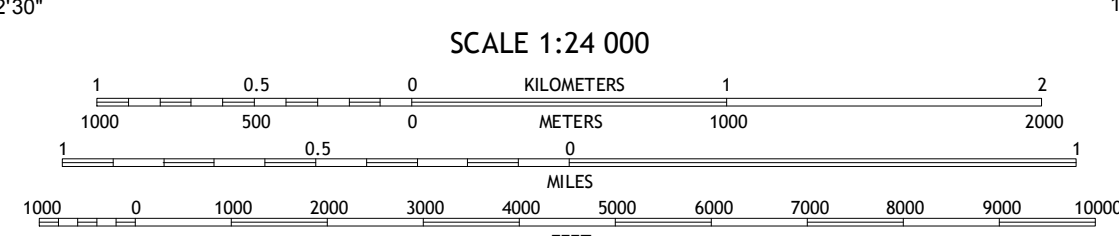
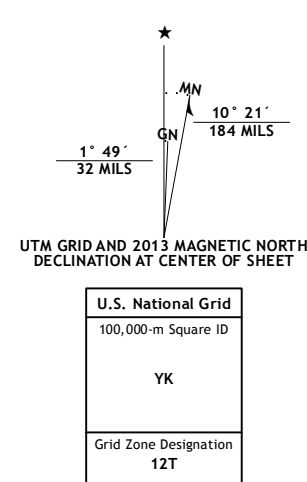
U.S. DEPARTMENT OF THE INTERIOR  
U. S. GEOLOGICAL SURVEY



CITADEL PLATEAU QUADRANGLE  
COLORADO-MOFFAT CO.  
7.5-MINUTE SERIES



Produced by the United States Geological Survey  
North American Datum of 1983 (NAD83)  
World Geodetic System of 1984 (WGS84). Projection and  
1000-meter grid: Universal Transverse Mercator, Zone 12T  
10 000-foot ticks: Colorado Coordinate System of 1983 (north zone)



QUADRANGLE LOCATION

Cross Mountain Canyon	Cedar Knob	Juniper Mountain
Wagitt Peak	Citadel Plateau	Pine Creek
Smizer Gulch	Indian Valley	White Rock

CONTOUR INTERVAL 40 FEET  
NORTH AMERICAN VERTICAL DATUM OF 1988  
This map was produced to conform with the National Geospatial Program US Topo Product Standard, 2011. A metadata file associated with this product is draft version 0.6.14

CITADEL PLATEAU, CO  
2013

ADJOINING 7.5 QUADRANGLES