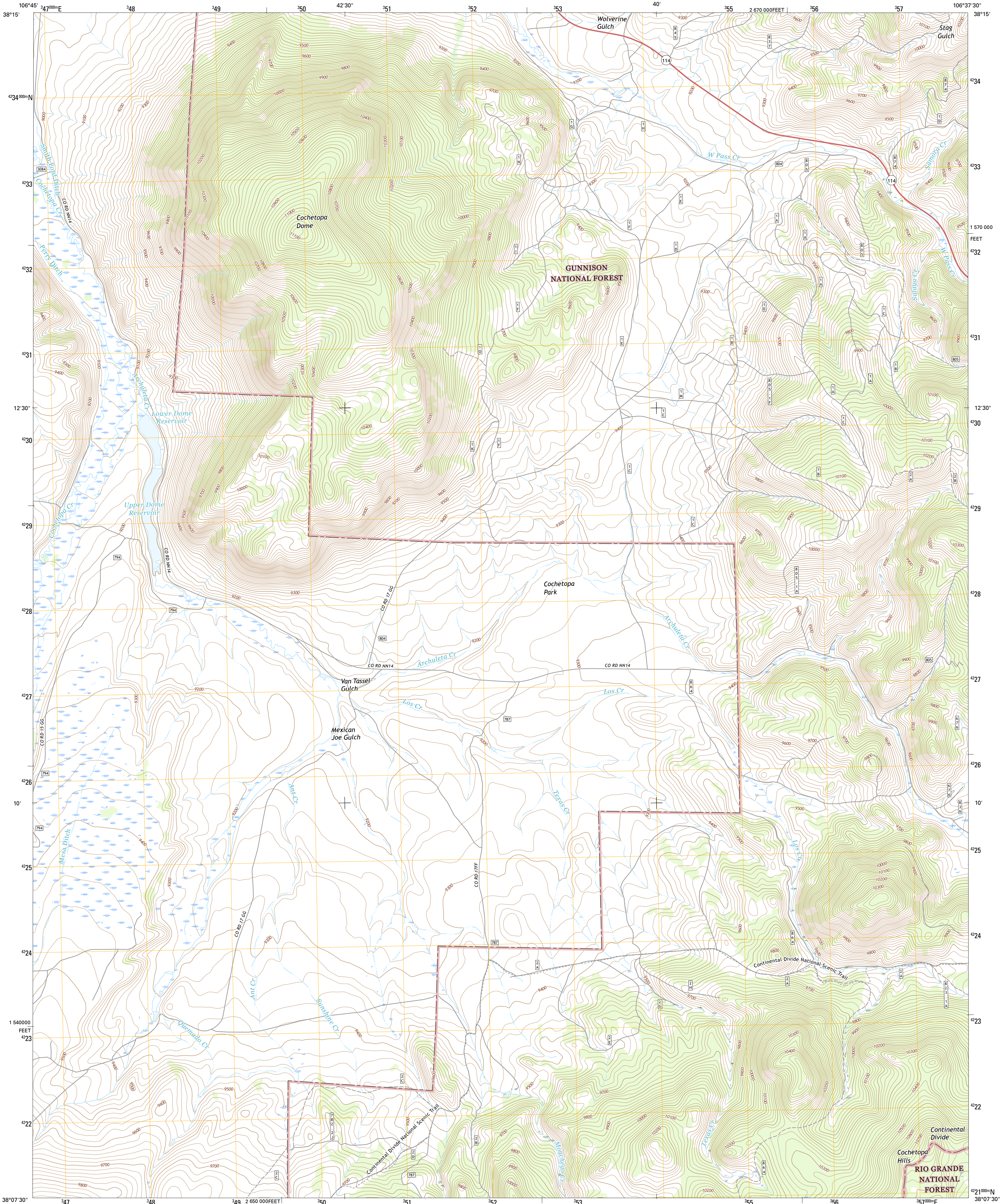




U.S. DEPARTMENT OF THE INTERIOR  
U.S. GEOLOGICAL SURVEY



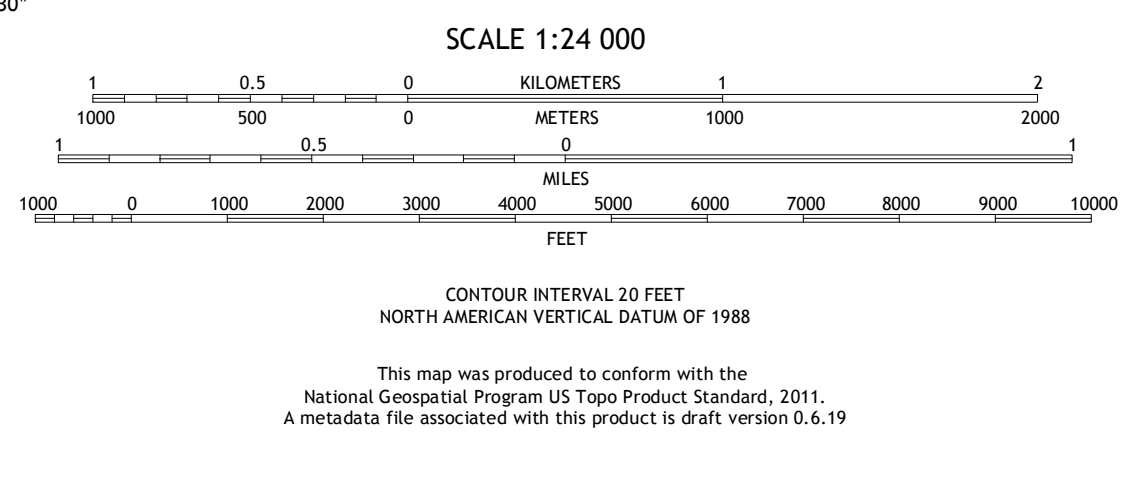
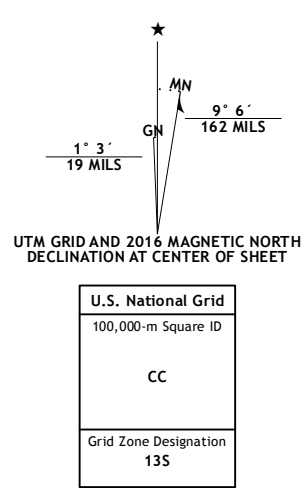
COCHETOPA PARK QUADRANGLE  
COLORADO-SAGUACHE CO.  
7.5-MINUTE SERIES



Produced by the United States Geological Survey  
North American Datum of 1983 (NAD83)  
World Geodetic System of 1984 (WGS84) Projection and  
1 000-meter grid: Universal Transverse Mercator, Zone 13S  
10 000-foot ticks: Colorado Coordinate System of 1983 (south zone)

This map is not a legal document. Boundaries may be generalized for this map scale. Private lands within government reservations may not be shown. Obtain permission before entering private lands.

Imagery.....NAIP, September 2013  
Roads.....U.S. Census Bureau, 2015 2016  
Roads within US Forest Service Lands.....FSTopo Data with limited Forest Service updates, 2012 - 2016  
Names.....National Hydrography Dataset, 2016  
Hydrography.....National Hydrography Dataset, 2013  
Contours.....National Elevation Dataset, 2001  
Boundaries.....Multiple sources; see metadata file 1972 - 2016  
Public Land Survey System.....BLM, 2011  
Wetlands.....FWS National Wetlands Inventory 1977 - 2014



1	2	3
4	5	6
7	8	9

ADJOINING QUADRANGLES

- Sawtooth Mountain
- Razor Creek Dome
- West Baldy
- Cold Spring Park
- North Pass
- Elk Park
- Saguache Park
- Gruse Creek

