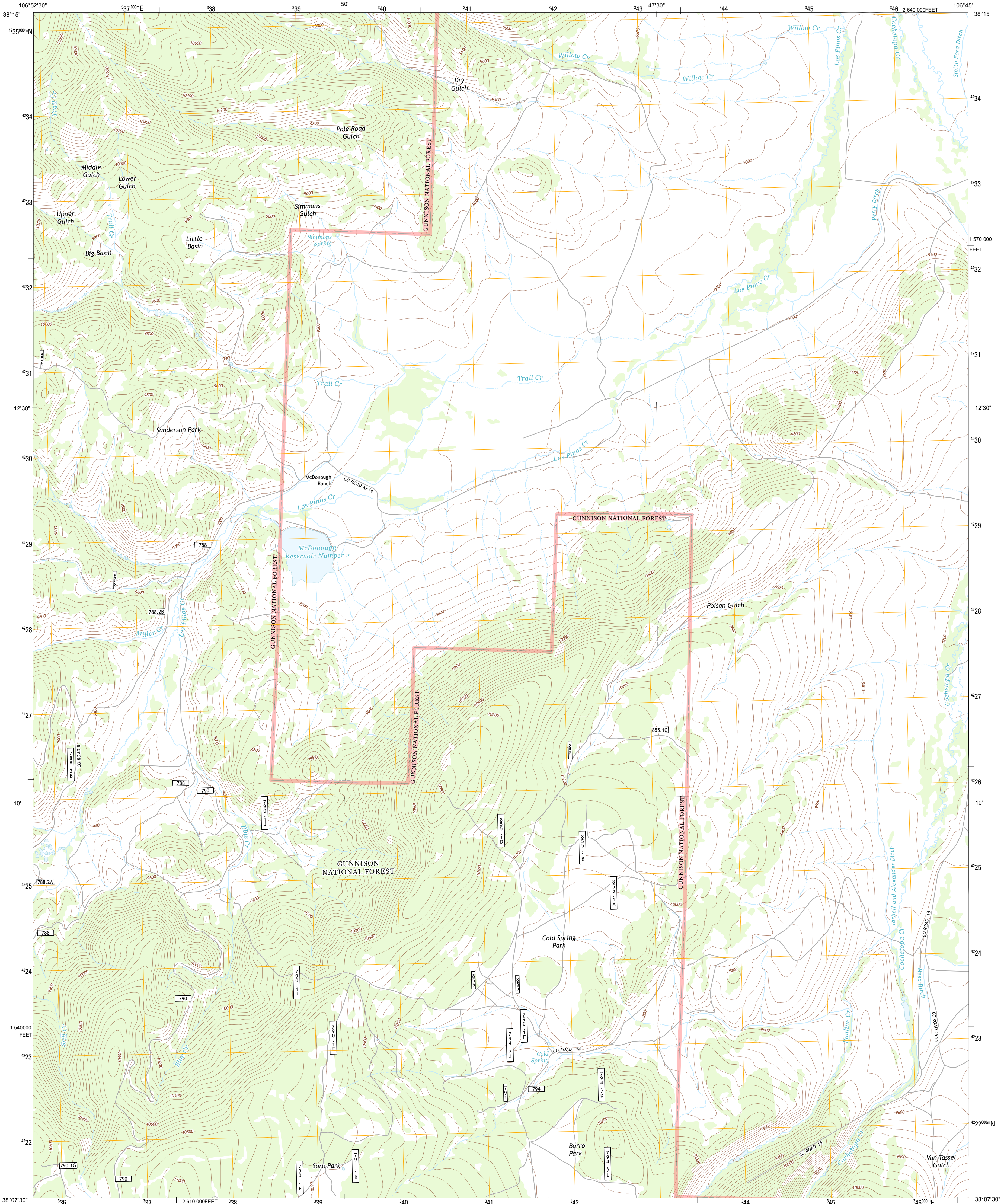




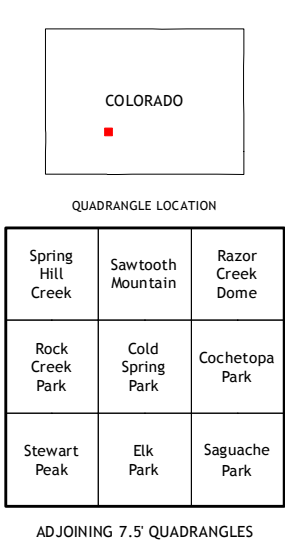
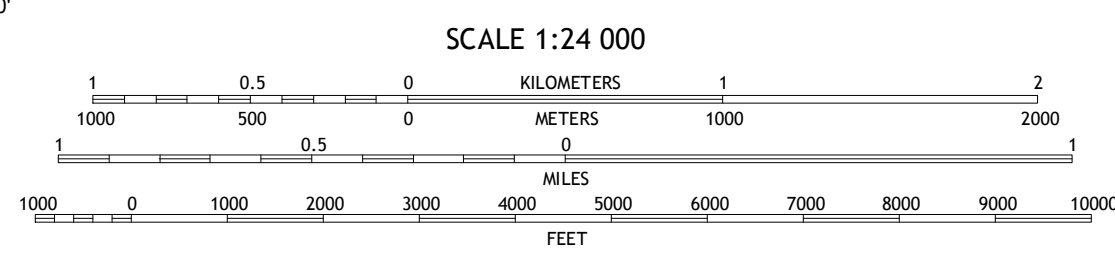
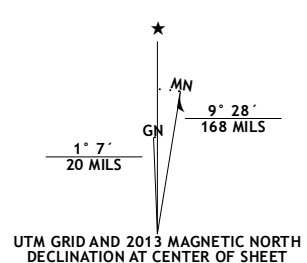
U.S. DEPARTMENT OF THE INTERIOR
U. S. GEOLOGICAL SURVEY



COLD SPRING PARK QUADRANGLE
COLORADO-SAGUACHE CO.
7.5-MINUTE SERIES



Produced by the United States Geological Survey
North American Datum of 1983 (NAD83)
World Geodetic System of 1984 (WGS84) Projection and
1 000-meter grid: Universal Transverse Mercator, Zone 13S
10 000-foot ticks: Colorado Coordinate System of 1983 (south zone)



| ROAD CLASSIFICATION | |
|---------------------|-------------------------|
| Expressway | Local Connector |
| Secondary Hwy | Local Road |
| Ramp | 4WD |
| Interstate Route | US Route |
| FS Primary Route | FS Passenger Route |
| | FS High Clearance Route |

Check with local Forest Service unit for current travel conditions and restrictions.

Imagery.....NAP, August 2011
Roads.....©2006-2012 TomTom
Roads within US Forest Service Lands with limited Forest Service updates, 2013
Names.....GNS, 2013
Hydrography.....National Hydrography Dataset, 2011
Contours.....National Elevation Dataset, 2003
Boundaries.....Census, IBWC, IBC, USGS, 1972-2012
Public Land Survey System.....BLM, 2011

| |
|-----------------------|
| U.S. National Grid |
| 100,000-m Square ID |
| CC |
| Grid Zone Designation |

CONTOUR INTERVAL 40 FEET
NORTH AMERICAN VERTICAL DATUM OF 1988
This map was produced to conform with the National Geospatial Program US Topo Product Standard, 2011. A metadata file associated with this product is draft version 0.6.14

| ADJOINING 7.5 QUADRANGLES | | |
|---------------------------|-------------------|------------------|
| Spring Hill Creek | Sawtooth Mountain | Razor Creek Dome |
| Rock Creek Park | Cold Spring Park | Cochetopa Park |
| Stewart Peak | Elk Park | Saguache Park |

COLD SPRING PARK, CO
2013