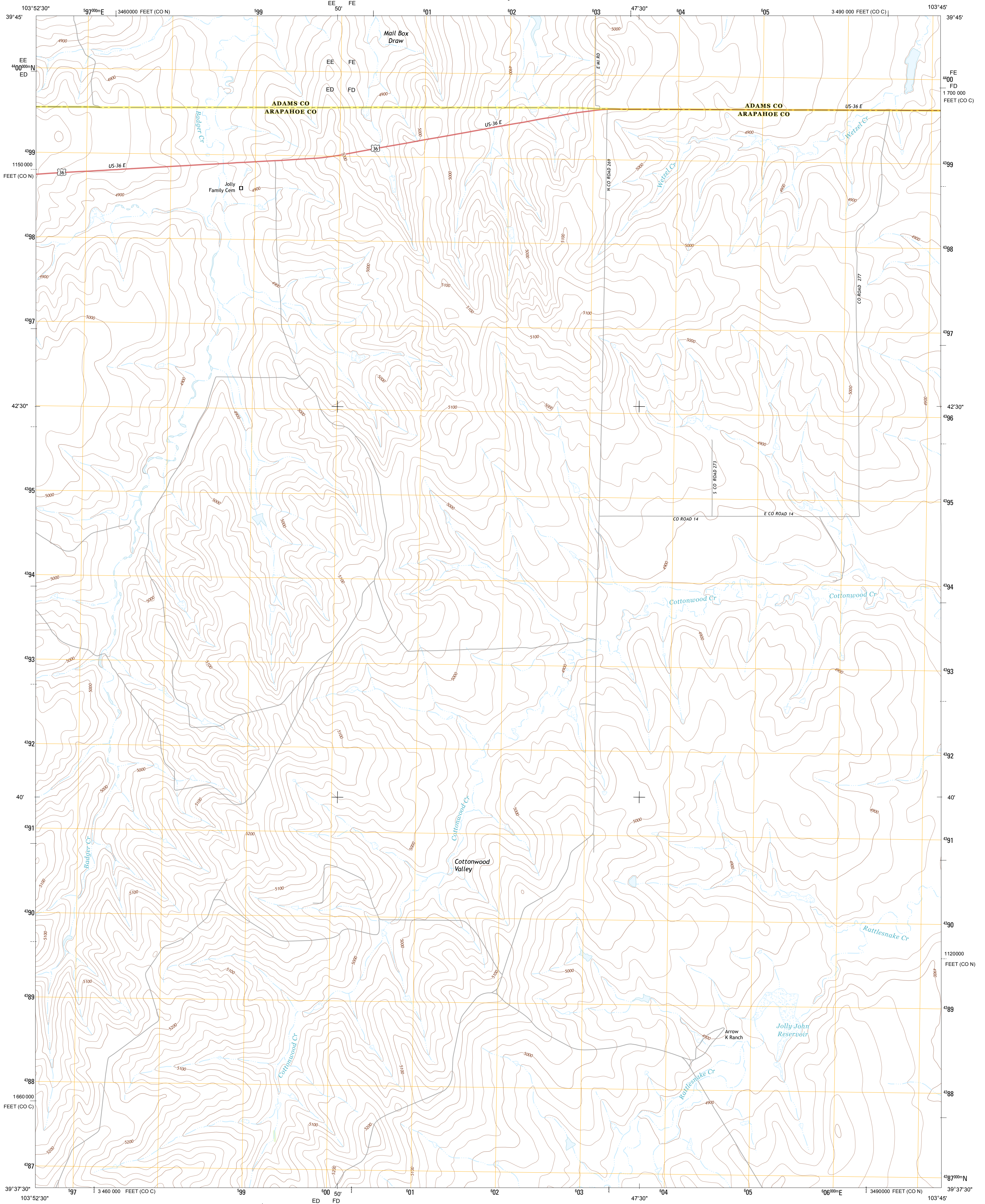




U.S. DEPARTMENT OF THE INTERIOR
U. S. GEOLOGICAL SURVEY

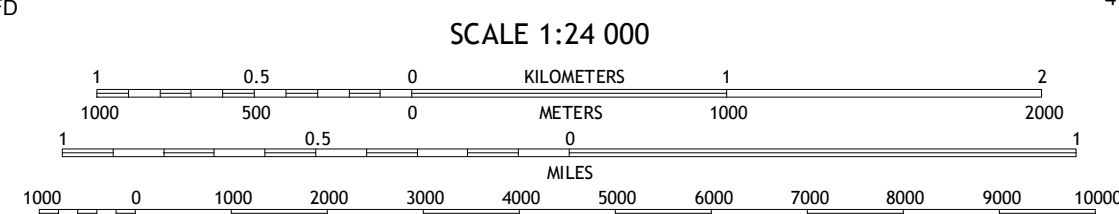
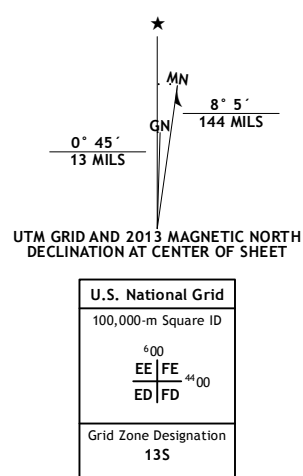


COTTONWOOD VALLEY NORTH QUADRANGLE
COLORADO
7.5-MINUTE SERIES



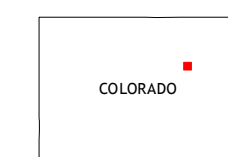
Produced by the United States Geological Survey
North American Datum of 1983 (NAD83)
World Geodetic System of 1984 (WGS84). Projection and
1:000-meter grid: Universal Transverse Mercator, Zone 13S
10,000-foot ticks: Colorado Coordinate System of 1983 (central
and north zones)

Imagery.....NAIP, July 2011
Roads.....©2006-2012, TomTom
Names.....GNIS, 2013
Hydrography.....National Hydrography Dataset, 2011
Contours.....National Elevation Dataset, 2007
Boundaries, IRWC, IBC, USGS, 1972 - 2012
Public Land Survey System.....BLM, 2011



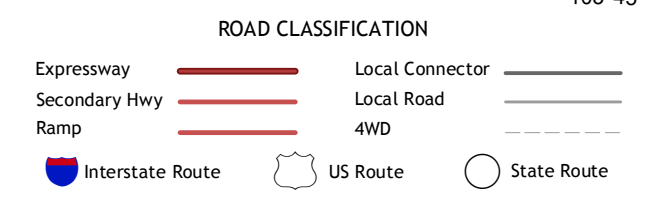
CONTOUR INTERVAL 20 FEET
NORTH AMERICAN VERTICAL DATUM OF 1988

This map was produced to conform with the
National Geospatial Program US Topo Product Standard, 2011.
A metadata file associated with this product is draft version 0.6.14



QUADRANGLE LOCATION

Poison Springs Reservoir	Shamrock SE	Wetzel Creek
Noonan Reservoir North	Cottonwood Valley North	Last Chance NW
Noonan Reservoir SW	Cottonwood Valley South	Last Chance SW



COTTONWOOD VALLEY NORTH, CO
2013

ADJOINING 7.5 QUADRANGLES