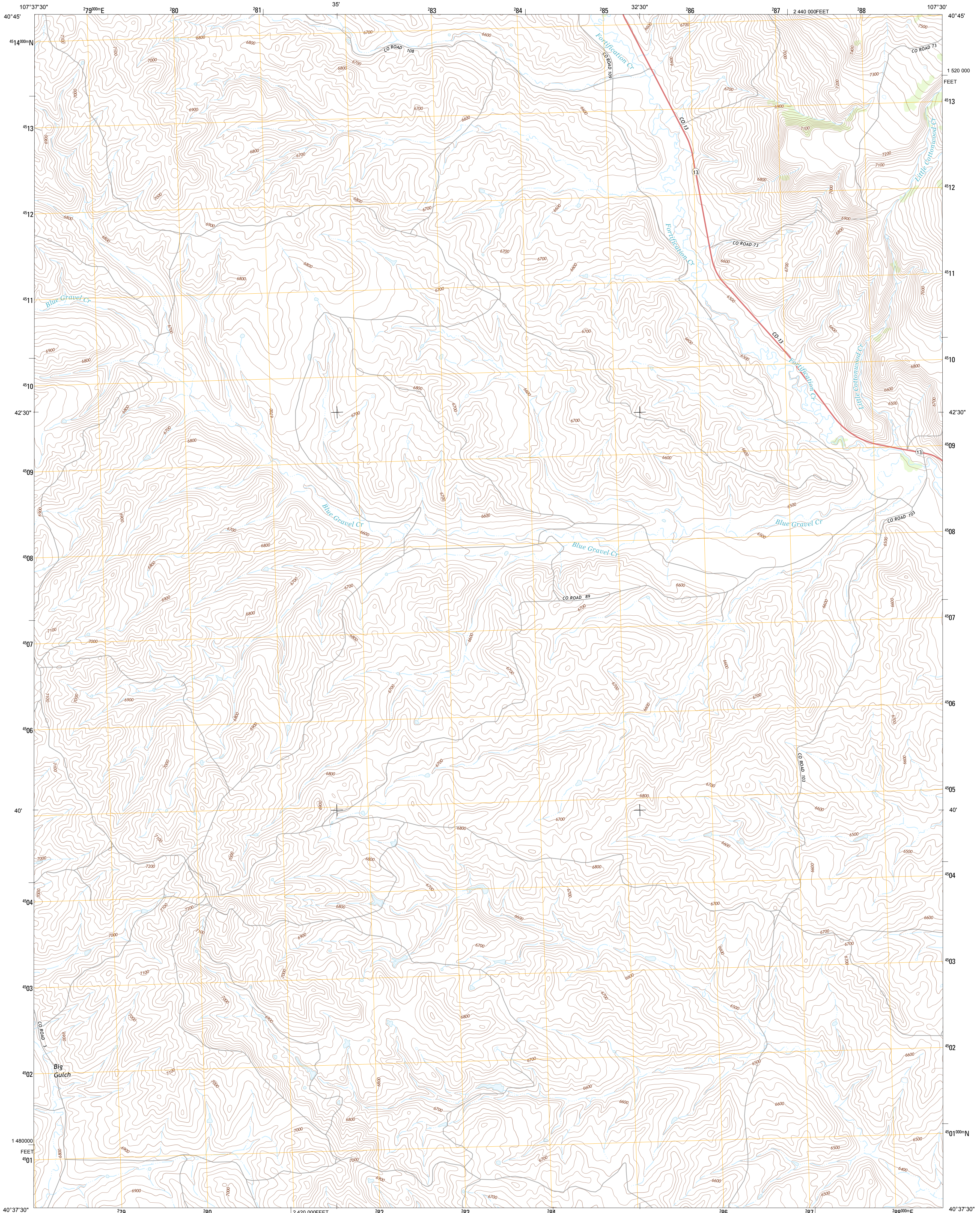




U.S. DEPARTMENT OF THE INTERIOR  
U. S. GEOLOGICAL SURVEY

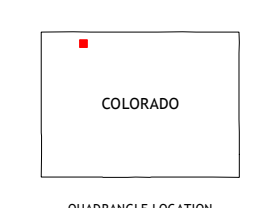
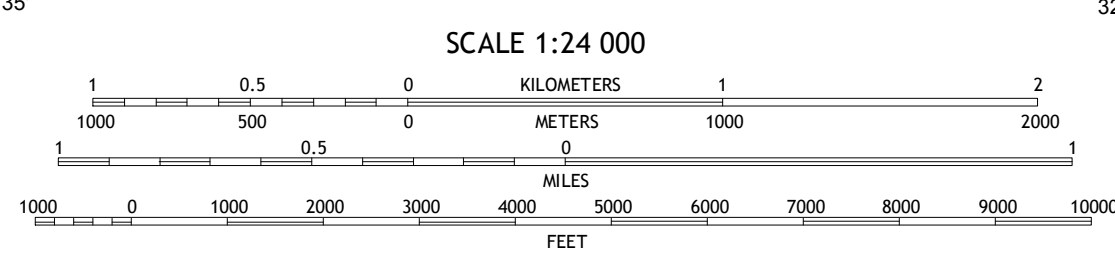
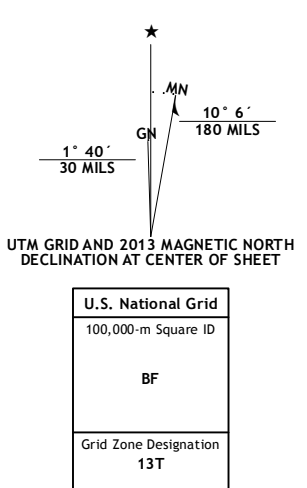


CRAIG NE QUADRANGLE  
COLORADO-MOFFAT CO.  
7.5-MINUTE SERIES



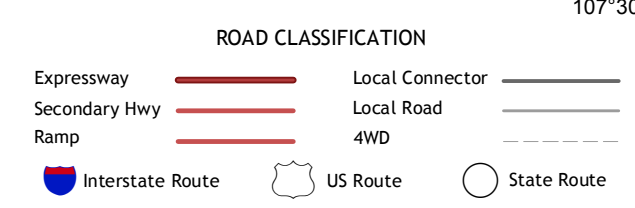
Produced by the United States Geological Survey  
North American Datum of 1983 (NAD83)  
World Geodetic System of 1984 (WGS84), Projection and  
1 000-meter grid; Universal Transverse Mercator, Zone 13T  
10 000-foot ticks; Colorado Coordinate System of 1983 (north zone)

Imagery.....NAIP, July 2011  
Roads.....©2006-2012 TomTom  
Names.....©2011  
Hydrography.....National Hydrography Dataset, 2011  
Contours.....National Elevation Dataset, 2003  
Boundaries.....Census, BGC, IBC, USGS, 1972-2012  
Public Land Survey System.....BLM, 2011



QUADRANGLE LOCATION

East Timberlake Creek	Fortification Creek	Freeman Reservoir
Craig NW	Craig NE	McInturf Mesa
Pine Ridge	Craig	Ralph White Lake



This map was produced to conform with the  
National Geospatial Program US Topo Product Standard, 2011.  
A metadata file associated with this product is draft version 0.6.14

CRAIG NE, CO  
2013

ADJOINING 7.5 QUADRANGLES