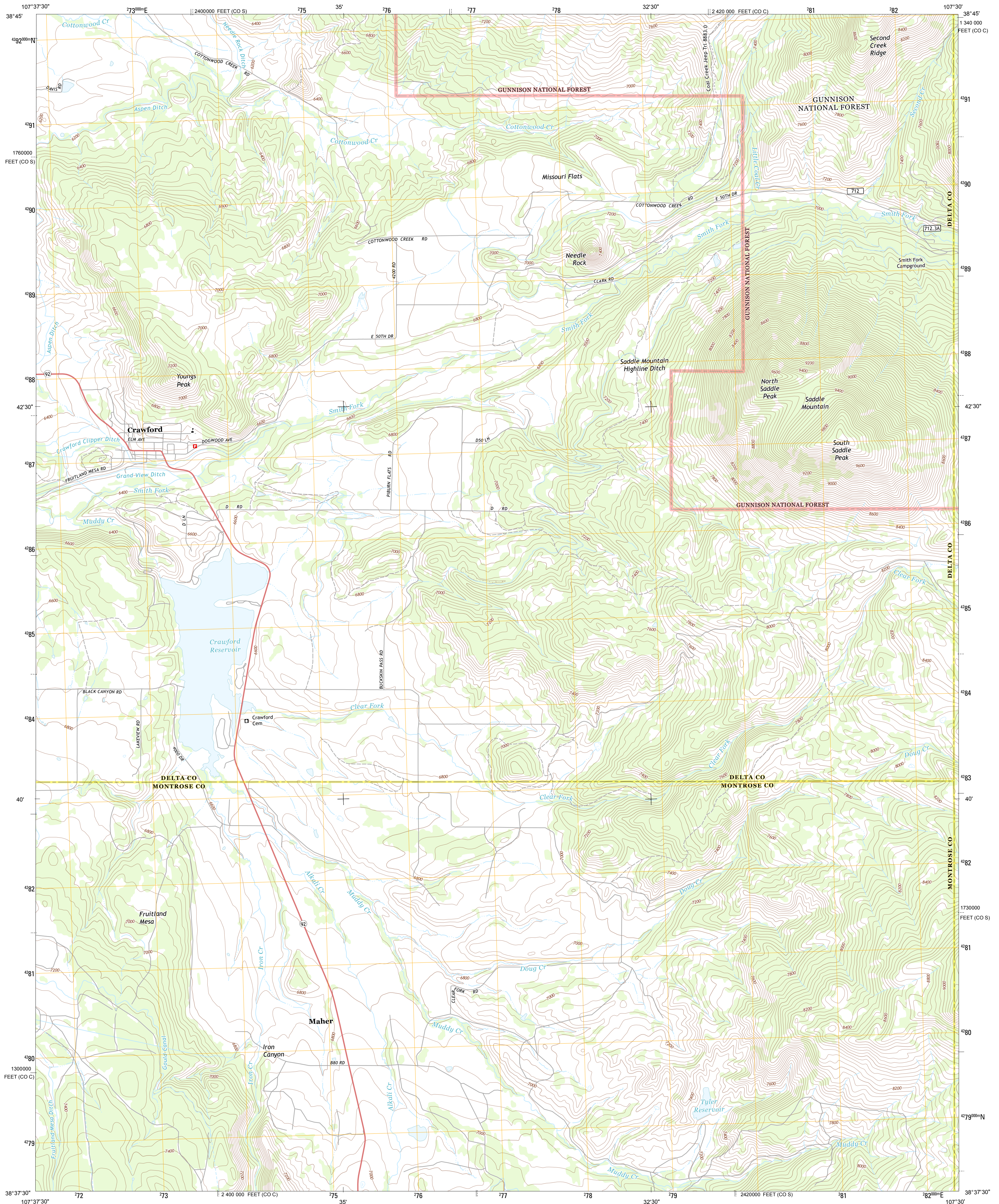




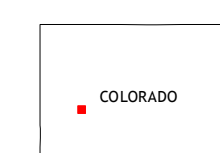
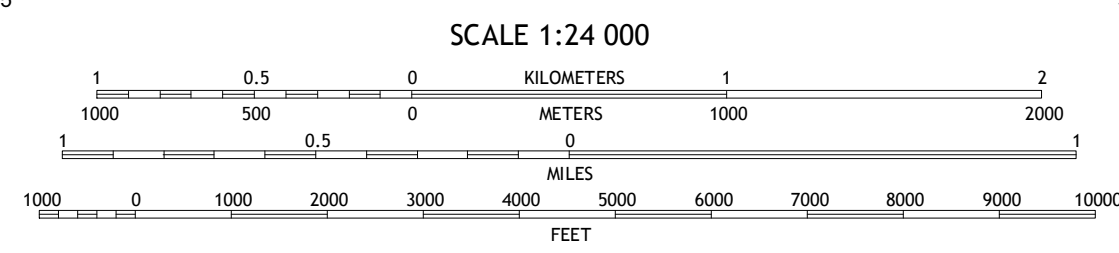
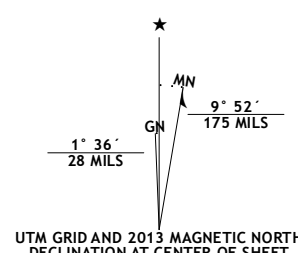
U.S. DEPARTMENT OF THE INTERIOR  
U. S. GEOLOGICAL SURVEY



CRAWFORD QUADRANGLE  
COLORADO  
7.5-MINUTE SERIES



Produced by the United States Geological Survey  
North American Datum of 1983 (NAD83)  
World Geodetic System of 1984 (WGS84). Projection and  
1 000 meter grid: Universal Transverse Mercator, Zone 13S  
10 000-foot ticks: Colorado Coordinate System of 1983 (central  
and south zones)



QUADRANGLE LOCATION		
Hotchkiss	Paonia	Miners Pass
Grand View Mesa	Crawford	Mount Guero
Grizzly Ridge	Cathedral Peak	X Lazy F Ranch

ROAD CLASSIFICATION	
Expressway	Local Connector
Secondary Hwy	Local Road
Ramp	4WD
Interstate Route	US Route
FS Primary Route	FS Passenger Route
	State Route
	FS High Clearance Route

Check with local Forest Service unit  
for current travel conditions and restrictions.

Imagery.....NAIP, July 2011 - August 2011  
Roads.....©2006-2012 TomTom  
Roads within US Forest Service Lands.....FS Topo Data  
with limited Forest Service updates, 2013  
Names.....GNIS, 2013  
Hydrography.....National Hydrography Dataset, 2011  
Contours.....National Elevation Dataset, 2003  
Boundaries.....Census, IBWC, IBC, USGS, 1972 - 2012  
Public Land Survey System.....BLM, 2011

U.S. National Grid	
100,000-m Square ID	BC
Grid Zone Designation	13S

CONTOUR INTERVAL 40 FEET  
NORTH AMERICAN VERTICAL DATUM OF 1988  
This map was produced to conform with the  
National Geospatial Program US Topo Product Standard, 2011.  
A metadata file associated with this product is draft version 0.6.14

CRAWFORD, CO  
2013

ADJOINING 7.5 QUADRANGLES