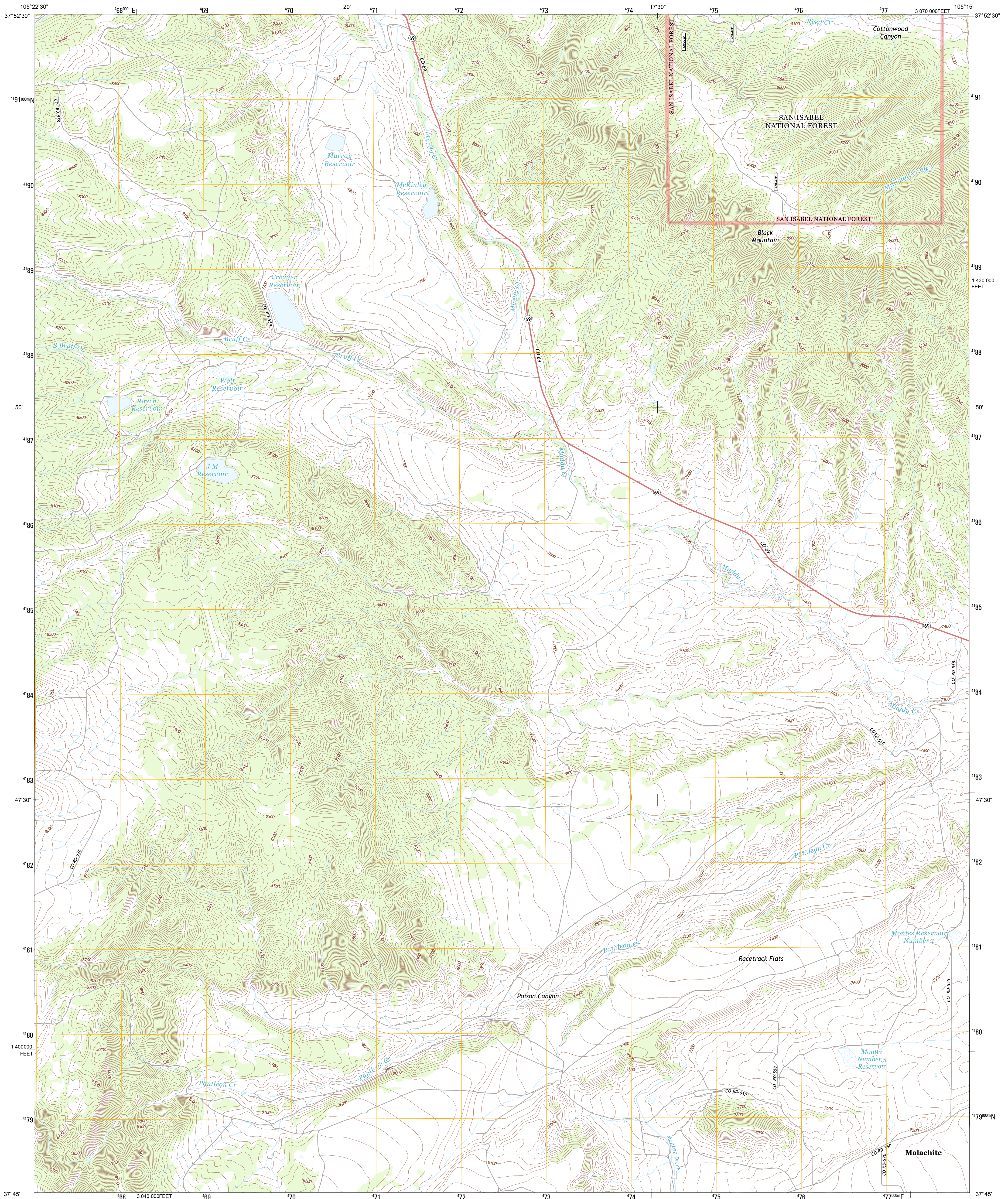




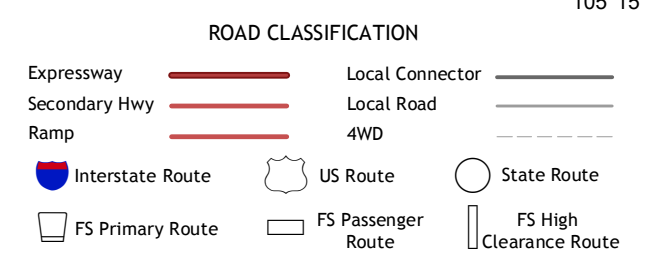
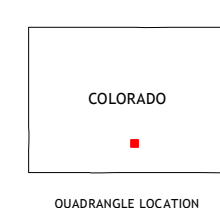
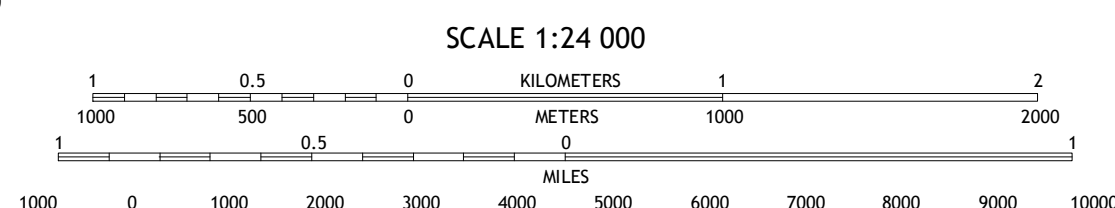
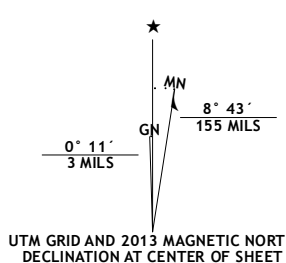
U.S. DEPARTMENT OF THE INTERIOR  
U. S. GEOLOGICAL SURVEY



CREAGER RESERVOIR QUADRANGLE  
COLORADO-HUERFANO CO.  
7.5-MINUTE SERIES



Produced by the United States Geological Survey  
North American Datum of 1983 (NAD83)  
World Geodetic System of 1984 (WGS84) Projection and  
1 000-meter grid: Universal Transverse Mercator, Zone 13S  
10 000-foot ticks: Colorado Coordinate System of 1983 (south zone)



Imagery.....NAIP, September 2011  
Roads.....2006-2012, TomTom  
Roads within US Forest Service Lands.....Data with limited Forest Service updates, 2013  
Names.....GNIS, 2013  
Hydrography.....National Hydrography Dataset, 2011  
Contours.....National Elevation Dataset, 2001  
Boundaries.....Census, IBWC, IBC, USGS, 1972 - 2012  
Public Land Survey System.....BLM, 2011

U.S. National Grid	100,000-Square ID
DB	
Grid Zone Designation	13S

CONTOUR INTERVAL 20 FEET  
NORTH AMERICAN VERTICAL DATUM OF 1988

This map was produced to conform with the National Geospatial Program US Topo Product Standard, 2011. A metadata file associated with this product is draft version 0.6.14

QUADRANGLE LOCATION

Beck Mountain	Devils Gulch	Bear Creek
Medano Pass	Creager Reservoir	Gardner
Mosca Pass	Red Wing	Little Sheep Mountain

Check with local Forest Service unit for current travel conditions and restrictions.

**CREAGER RESERVOIR, CO**  
2013

ADJOINING 7.5 QUADRANGLES