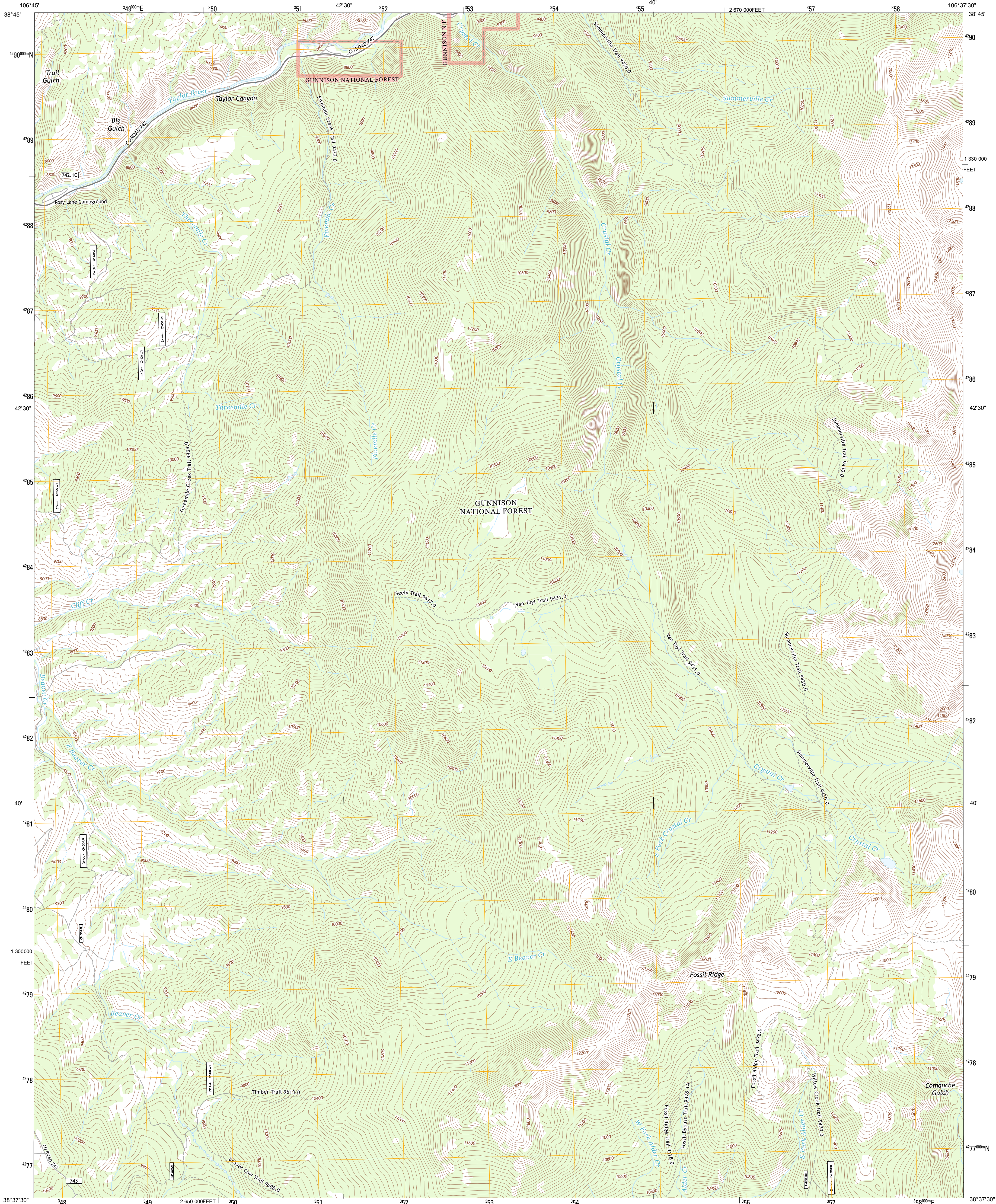




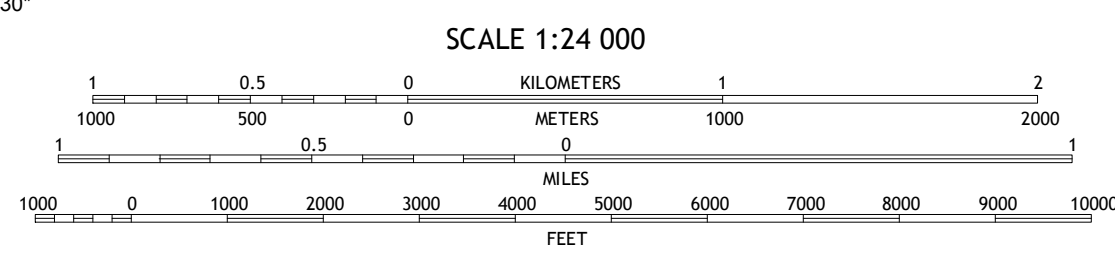
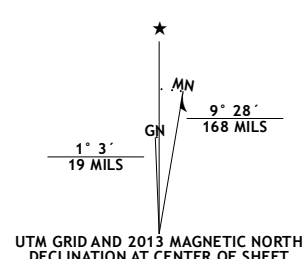
U.S. DEPARTMENT OF THE INTERIOR
U. S. GEOLOGICAL SURVEY



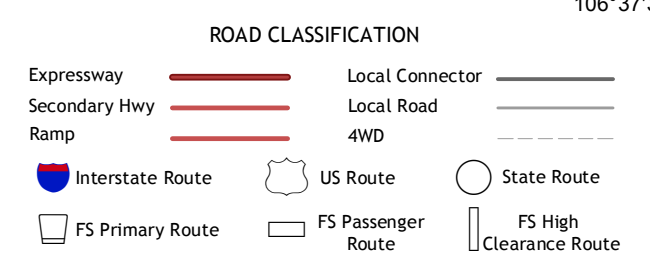
CRYSTAL CREEK QUADRANGLE
COLORADO-GUNNISON CO.
7.5-MINUTE SERIES



Produced by the United States Geological Survey
North American Datum of 1983 (NAD83)
World Geodetic System of 1984 (WGS84). Projection and
1:000-meter grid: Universal Transverse Mercator, Zone 13S
10 000-foot ticks: Colorado Coordinate System of 1983 (central
zone)



QUADRANGLE LOCATION		
Cement Mountain	Matchless Mountain	Taylor Park Reservoir
Almont	Crystal Creek	Fairview Peak
Signal Peak	Purkin	Pitkin



Check with local Forest Service unit
for current travel conditions and restrictions.

CRYSTAL CREEK, CO
2013

Imagery.....NAIP, August 2011 - September 2011
Roads.....©2006-2012 TomTom
Roads within US Forest Service Lands.....FS Data
with limited Forest Service updates, 2013
Names.....GNIS, 2013
Hydrography.....National Hydrography Dataset, 2011
Contours.....National Elevation Dataset, 2004
Boundaries.....Census, IBWC, IBC, USGS, 1972 - 2012
Public Land Survey System.....BLM, 2011

U.S. National Grid	
100,000-m Square ID	CC
Grid Zone Designation	13S

CONTOUR INTERVAL 40 FEET
NORTH AMERICAN VERTICAL DATUM OF 1988

This map was produced to conform with the
National Geospatial Program US Topo Product Standard, 2011.
A metadata file associated with this product is draft version 0.6.14

ADJOINING 7.5 QUADRANGLES