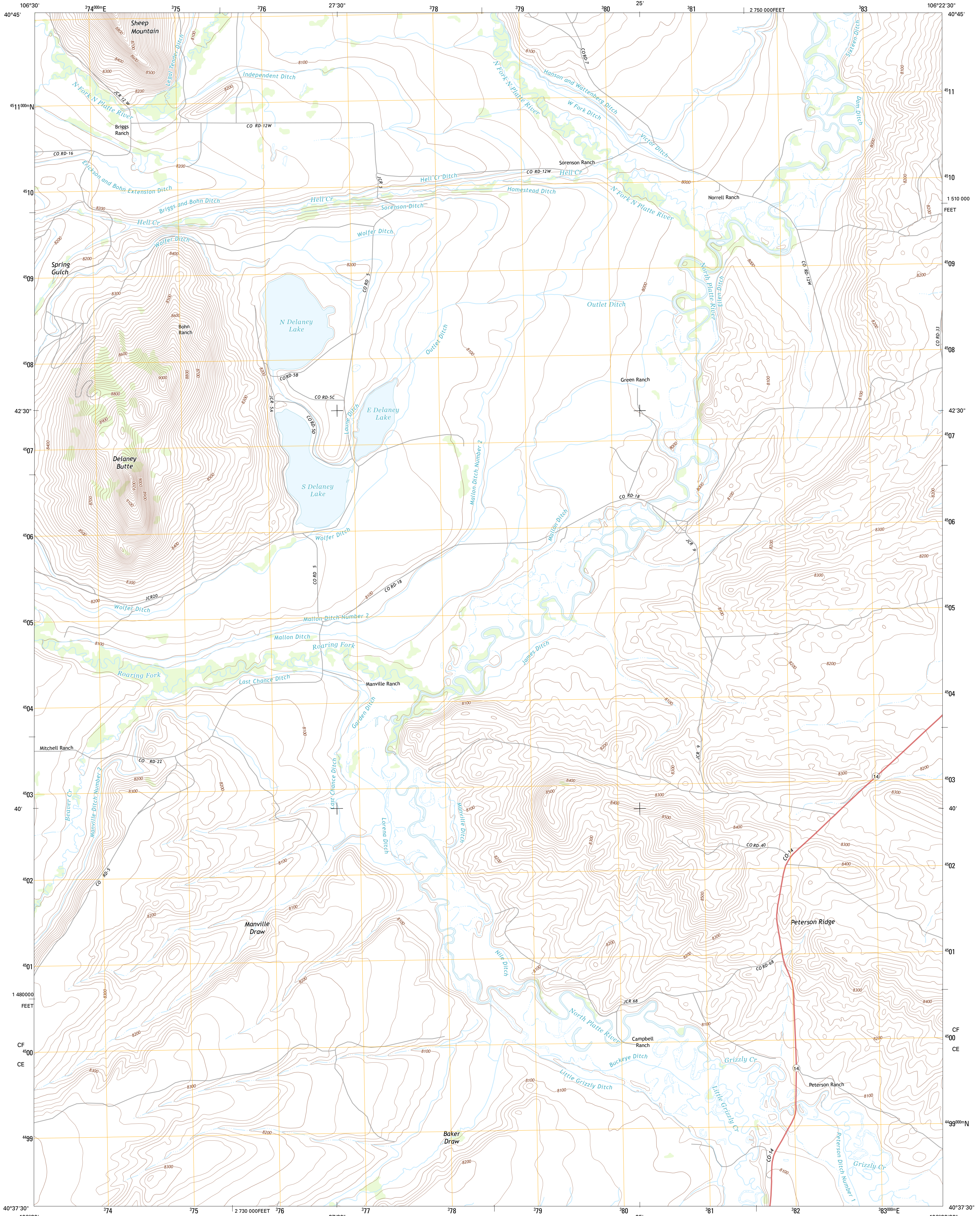




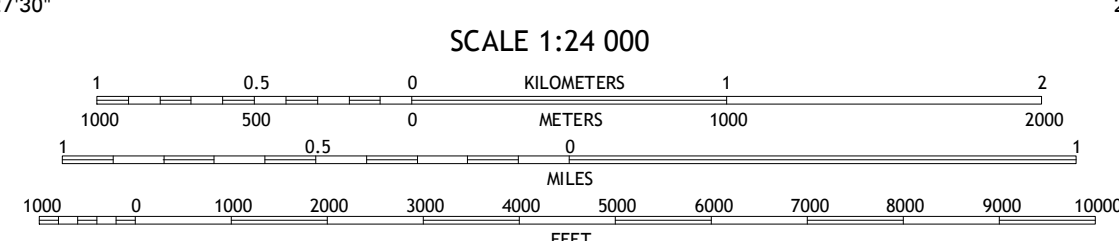
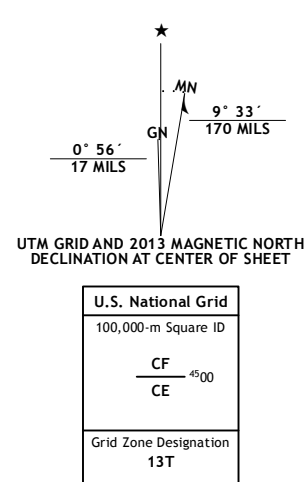
U.S. DEPARTMENT OF THE INTERIOR
U. S. GEOLOGICAL SURVEY



DELANEY BUTTE QUADRANGLE
COLORADO-JACKSON CO.
7.5-MINUTE SERIES

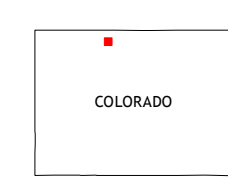


Produced by the United States Geological Survey
North American Datum of 1983 (NAD83)
World Geodetic System of 1984 (WGS84) Projection and
1 000-meter grid; Universal Transverse Mercator, Zone 13T
10 000-foot ticks; Colorado Coordinate System of 1983 (north zone)



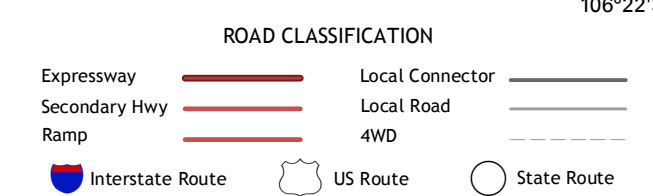
CONTOUR INTERVAL 20 FEET
NORTH AMERICAN VERTICAL DATUM OF 1988

This map was produced to conform with the National Geospatial Program US Topo Product Standard, 2011. A metadata file associated with this product is draft version 0.6.14



QUADRANGLE LOCATION

| | | |
|--------------------|---------------|----------------------|
| Boettcher Lake | Lake John | Cowdrey |
| Pitchpine Mountain | Delaney Butte | Walden |
| Teal Lake | Coalmont | MacFarlane Reservoir |



DELANEY BUTTE, CO
2013

ADJOINING 7.5 QUADRANGLES