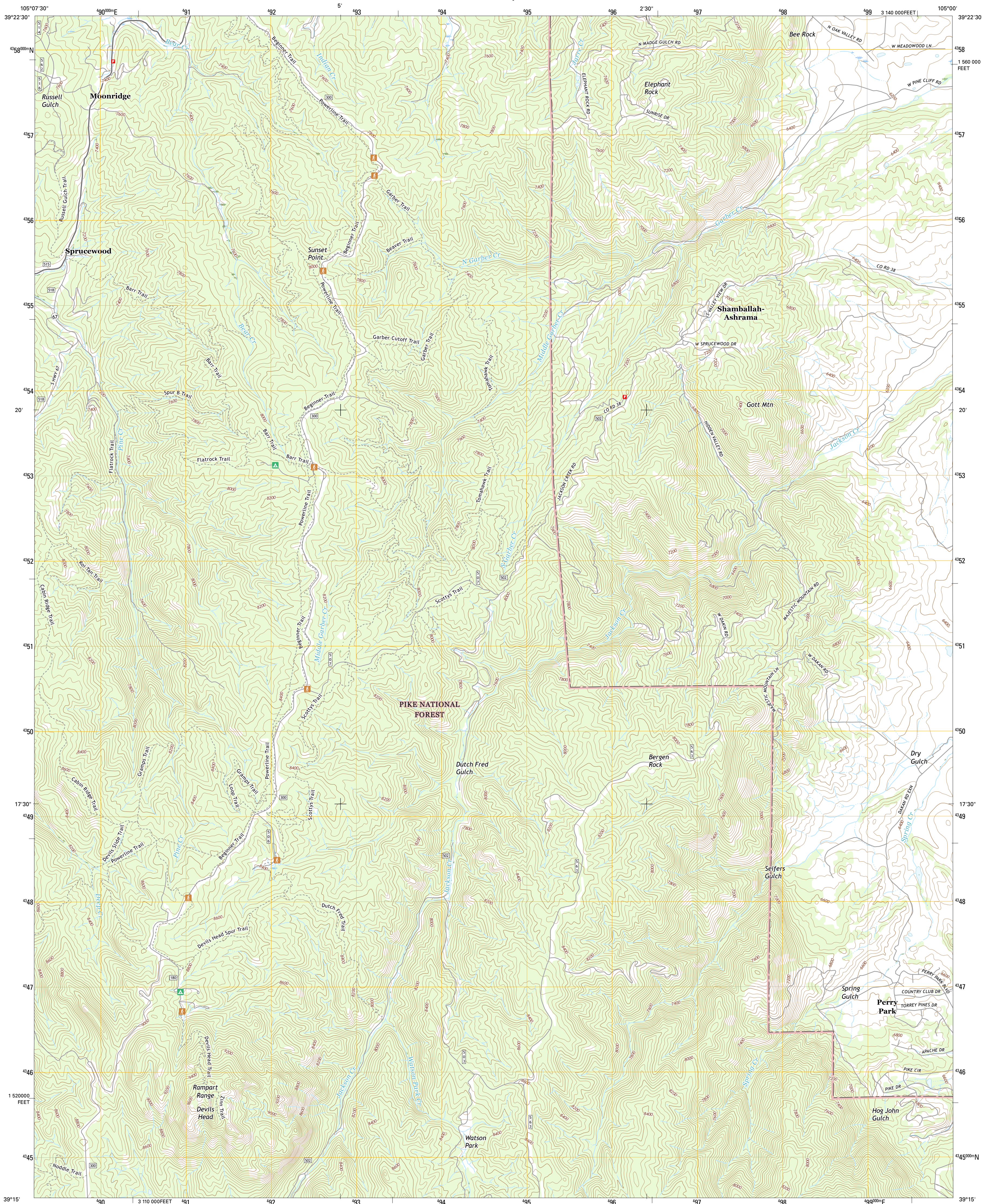




U.S. DEPARTMENT OF THE INTERIOR
U.S. GEOLOGICAL SURVEY



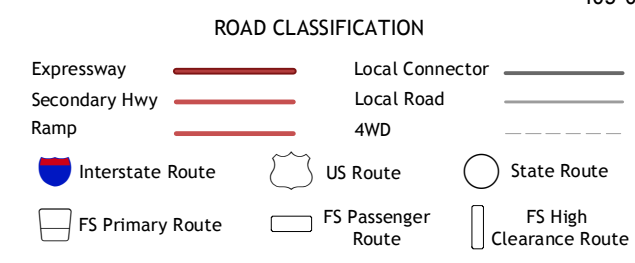
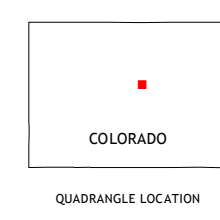
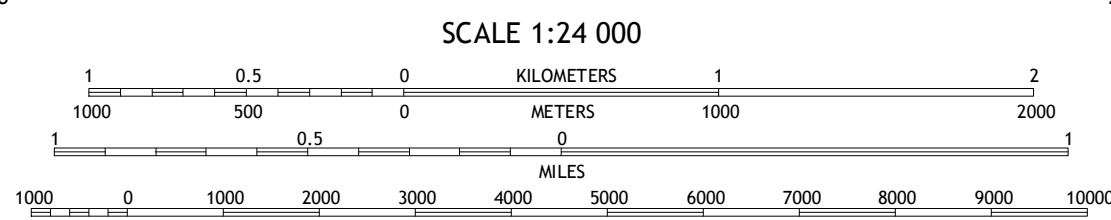
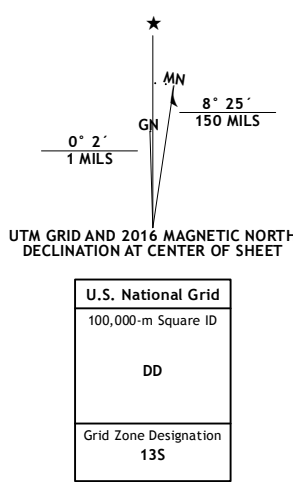
DEVILS HEAD QUADRANGLE
COLORADO-DOUGLAS CO.
7.5-MINUTE SERIES



Produced by the United States Geological Survey
North American Datum of 1983 (NAD83)
World Geodetic System of 1984 (WGS84) Projection and
1 000-meter grid: Universal Transverse Mercator, Zone 13S
10 000-foot ticks: Colorado Coordinate System of 1983 (central zone)

This map is not a legal document. Boundaries may be generalized for this map scale. Private lands within government reservations may not be shown. Obtain permission before entering private lands.

Imagery:NAIP, September 2013
Roads:U.S. Census Bureau, 2015 - 2016
Roads within US Forest Service Lands:FS Topo Data with limited Forest Service updates, 2012 - 2016
Names:GNIS, 2016
Hydrography:National Hydrography Dataset, 2013
Contours:National Elevation Dataset, 2002
Boundaries:Multiple sources; see metadata file 1972 - 2016
Public Land Survey System:BLM, 2011
Wetlands:FWS National Wetlands Inventory 1977 - 2014



1	2	3
4	5	6
7	8	

ADJOINING QUADRANGLES

1 Platte Canyon
2 Kassler
3 Scallia
4 Deckers
5 Dawson Butte
6 Westcreek
7 Dakan Mountain
8 Larkspur

DEVILS HEAD, CO
2016

