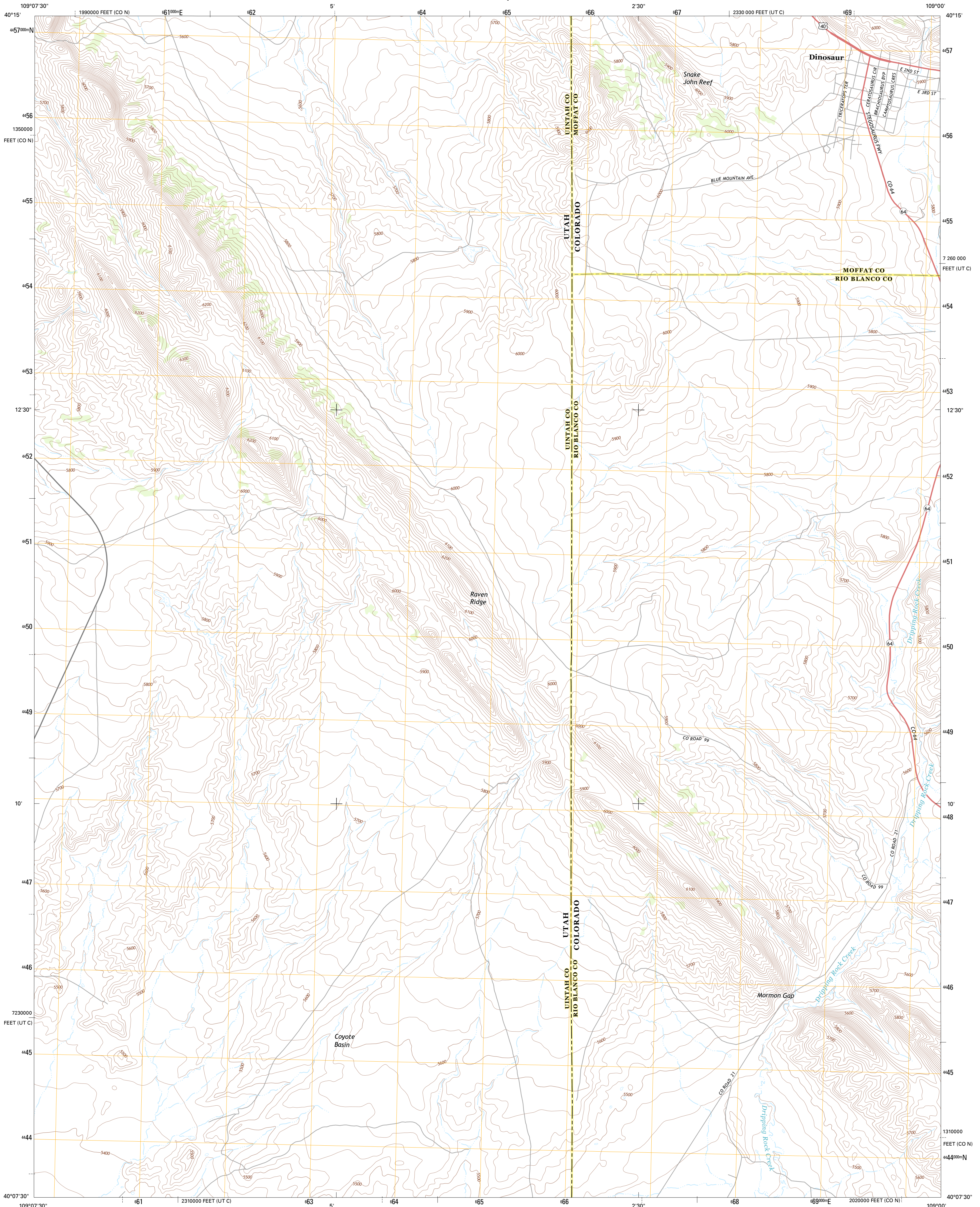




U.S. DEPARTMENT OF THE INTERIOR
U. S. GEOLOGICAL SURVEY

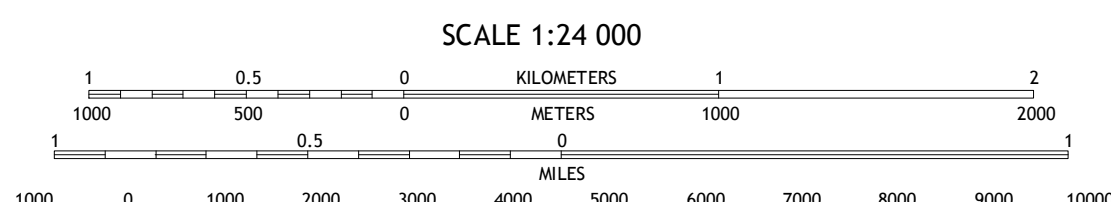
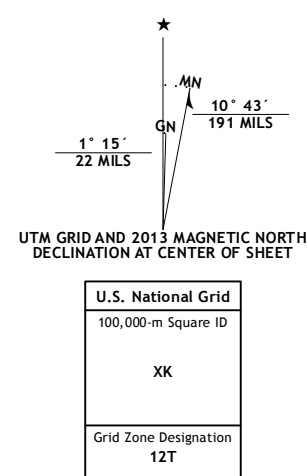


DINOSAUR QUADRANGLE
COLORADO-UTAH
7.5-MINUTE SERIES

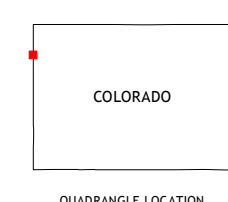


Produced by the United States Geological Survey
North American Datum of 1983 (NAD83)
World Geodetic System of 1984 (WGS84)
1 000-meter grid: Universal Transverse Mercator, Zone 12T
10 000-foot ticks: Utah Coordinate System of 1983 (central zone), Colorado Coordinate System of 1983 (north zone)

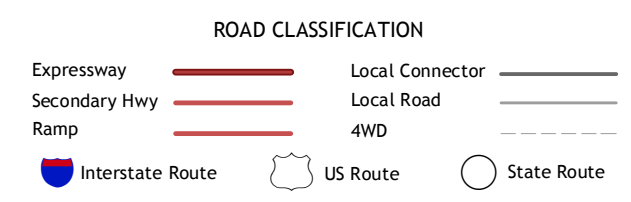
Imagery.....NAIP, June 2011 - July 2011
Roads.....©2006-2012 TomTom
Names.....GNIS, 2013
Hydrography.....National Hydrography Dataset, 2009
Contours.....National Elevation Dataset, 2003
Boundaries.....Census, IBWC, IBC, USGS, 1972 - 2012
Public Land Survey System.....BLM, 2011



CONTOUR INTERVAL 20 FEET
NORTH AMERICAN VERTICAL DATUM OF 1988
This map was produced to conform with the National Geospatial Program US Topo Product Standard, 2011. A metadata file associated with this product is draft version 0.6.14



Cliff Ridge	Snake John Reef	Plug Hat Rock
Dinosaur NW	Dinosaur	Mellen Hill
Bonanza	Walsh Knolls	Banty Point



DINOSAUR, CO-UT
2013

ADJOINING 7.5' QUADRANGLES