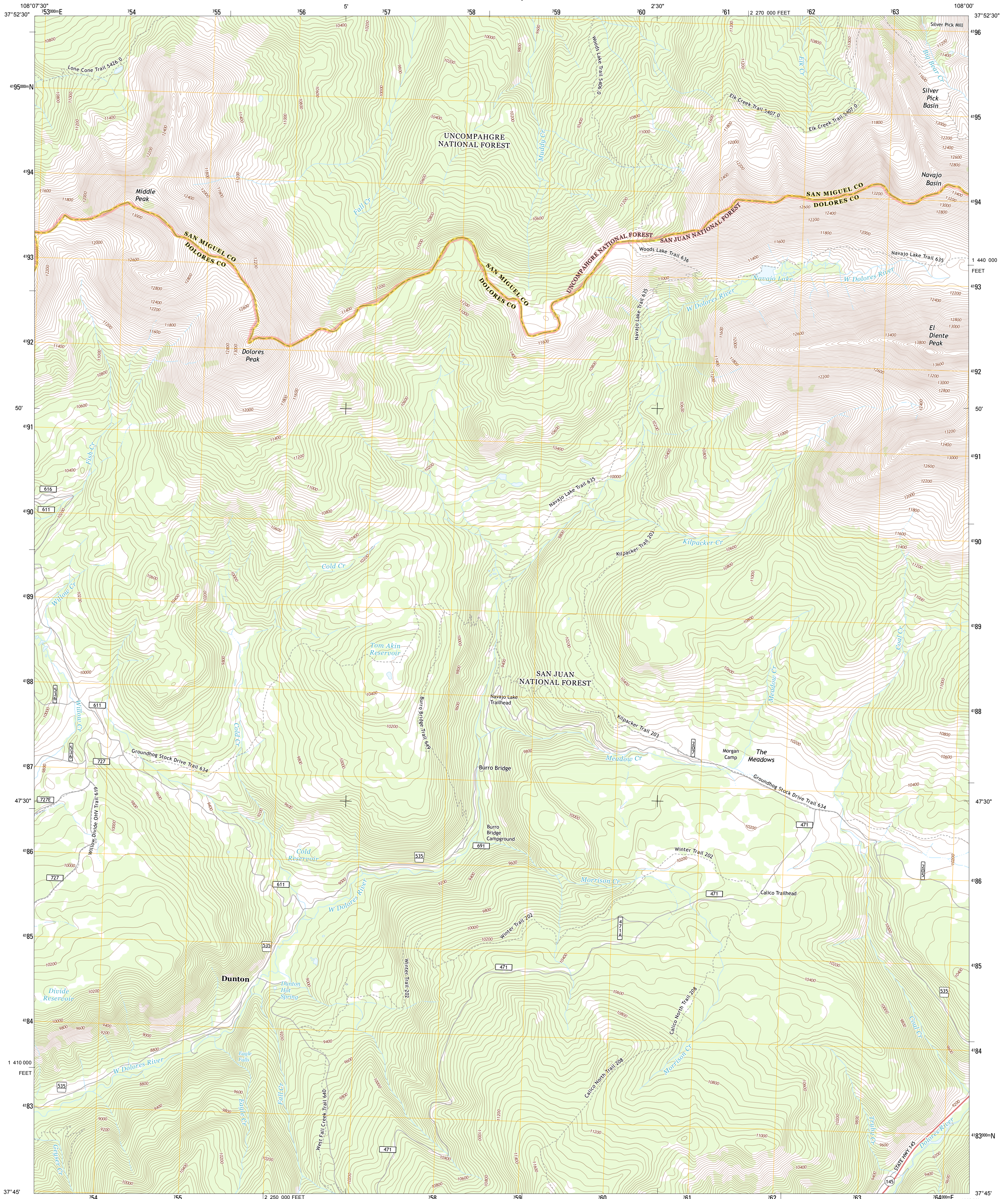




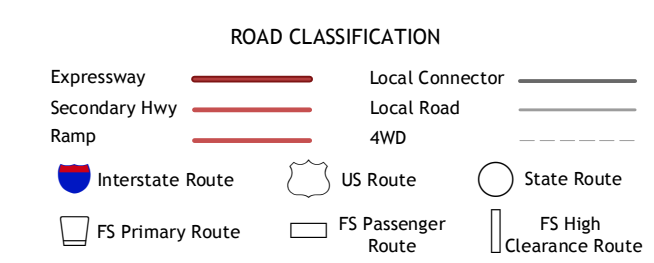
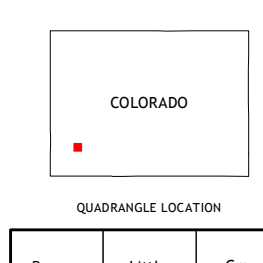
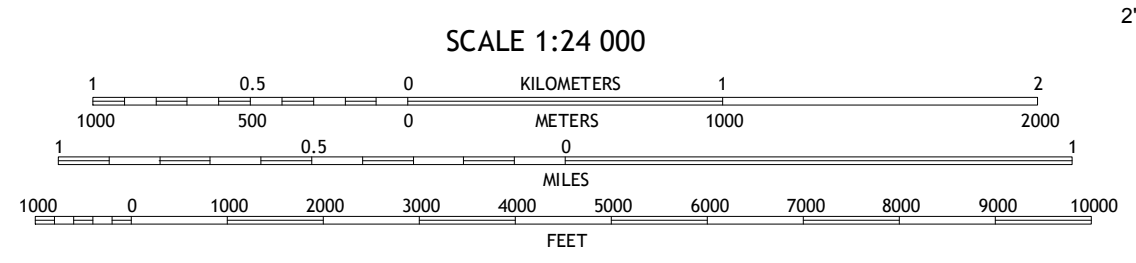
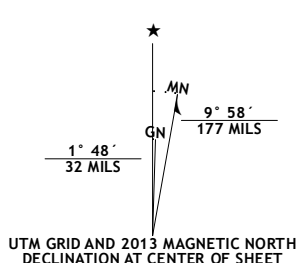
U.S. DEPARTMENT OF THE INTERIOR  
U. S. GEOLOGICAL SURVEY



**DOLORES PEAK QUADRANGLE**  
COLORADO  
7.5-MINUTE SERIES



Produced by the United States Geological Survey  
North American Datum of 1983 (NAD83)  
World Geodetic System of 1984 (WGS84), Projection and  
1 000-meter grid: Universal Transverse Mercator, Zone 12S  
10 000-foot ticks: Colorado Coordinate System of 1983 (south zone)



Imagery.....N.A.I.P., July 2011 - August 2011  
Roads.....2006-2012 TomTom  
Roads within US Forest Service Lands.....FS Topo Data  
with limited Forest Service updates, 2013  
Names.....GNIS, 2013  
Hydrography.....National Hydrography Dataset, 2011  
Contours.....National Elevation Dataset, 2005  
Boundaries.....Census, IBWC, IBC, USGS, 1972 - 2012  
Public Land Survey System.....BLM, 2011

U.S. National Grid	100,000-m Square ID
YG	
Grid Zone Designation	12S

CONTOUR INTERVAL 40 FEET  
NORTH AMERICAN VERTICAL DATUM OF 1988

This map was produced to conform with the  
National Geospatial Program US Topo Product Standard, 2011.  
A metadata file associated with this product is draft version 0.6.14

Beaver Park	Little Cone	Gray Head
Groundhog Mountain	Dolores Peak	Mount Wilson
Clyde Lake	Rico	Hermosa Peak

Check with local Forest Service unit  
for current travel conditions and restrictions.

**DOLORES PEAK, CO**  
2013

ADJOINING 7.5 QUADRANGLES