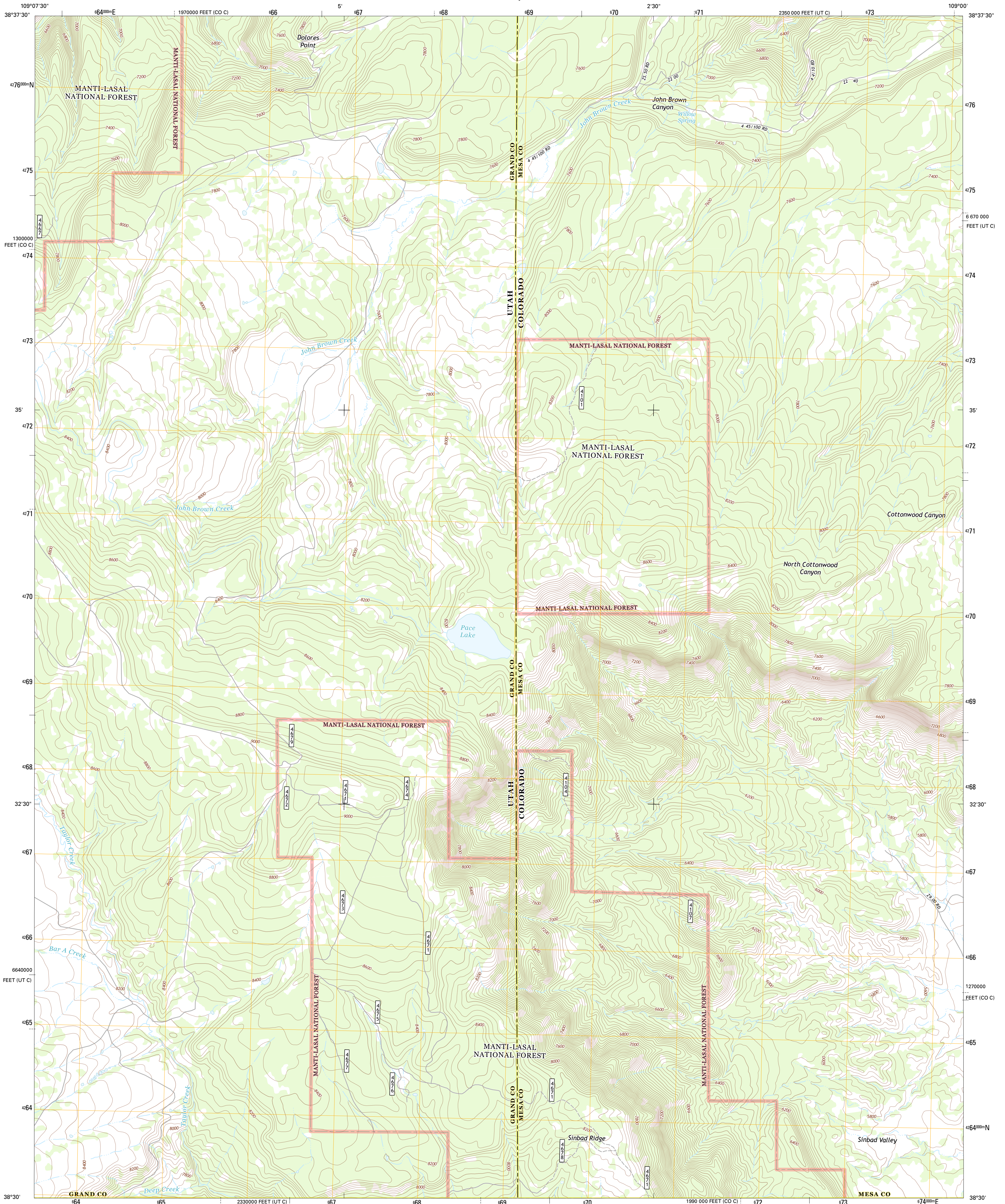




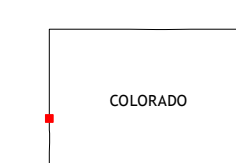
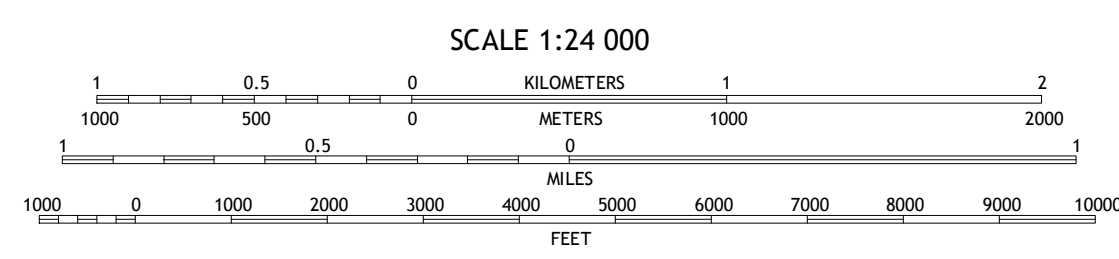
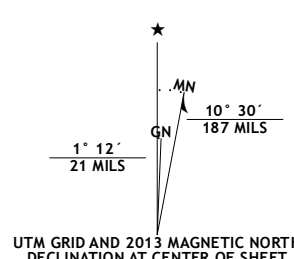
U.S. DEPARTMENT OF THE INTERIOR
U. S. GEOLOGICAL SURVEY



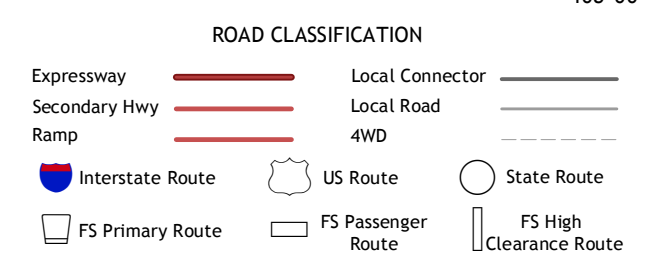
DOLORES POINT SOUTH QUADRANGLE
COLORADO-UTAH
7.5-MINUTE SERIES



Produced by the United States Geological Survey
North American Datum of 1983 (NAD83)
World Geodetic System of 1984 (WGS84). Projection and
1:500-meter grid: Universal Transverse Mercator, Zone 12S
10 000-foot ticks: Utah Coordinate System of 1983 (central
zone), Colorado Coordinate System of 1983 (central zone)



Fisher Valley	Dolores Point North	Gateway
Mount Waas	Dolores Point South	Junata Arch
Mount Peate	Buckeye Reservoir	Roc Creek



Check with local Forest Service unit for current travel conditions and restrictions.

Imagery.....NAIP, June 2011 - August 2011
Roads.....TomTom
Roads within US Forest Service Lands.....FS Topo Data with limited Forest Service updates, 2013
Names.....GNIS, 2013
Hydrography.....National Hydrography Dataset, 2009
Contours.....National Elevation Dataset, 2000
Boundaries.....Census, IBWC, IBC, USGS, 1972 - 2012
Public Land Survey System.....BLM, 2011

U.S. National Grid
100,000-m Square ID
XH
Grid Zone Designation
12S

CONTOUR INTERVAL 40 FEET
NORTH AMERICAN VERTICAL DATUM OF 1988

This map was produced to conform with the National Geospatial Program US Topo Product Standard, 2011. A metadata file associated with this product is draft version 0.6.14

DOLORES POINT SOUTH, CO-UT
2013

ADJOINING 7.5 QUADRANGLES