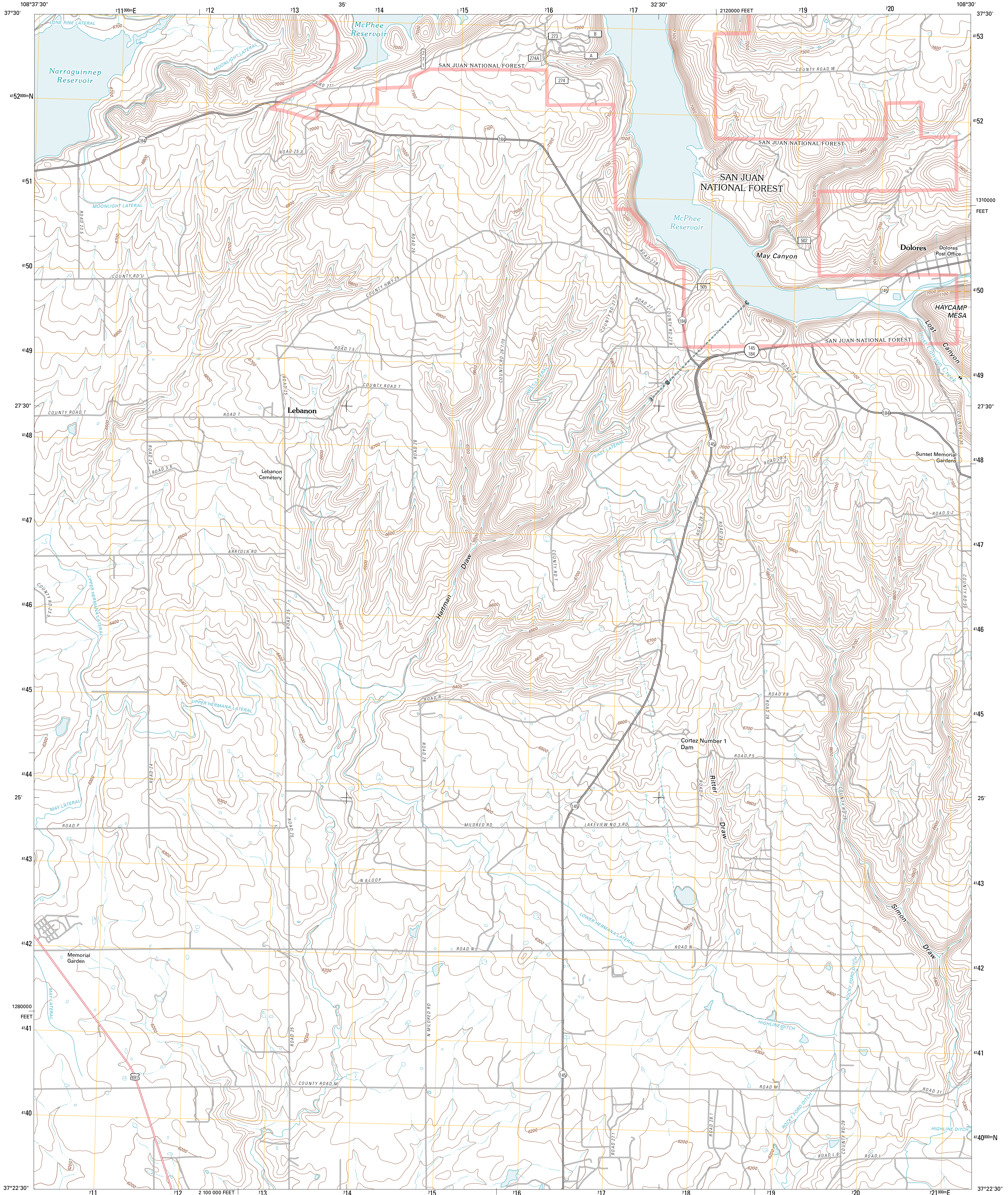




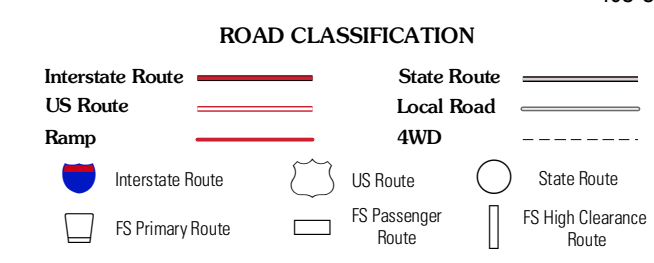
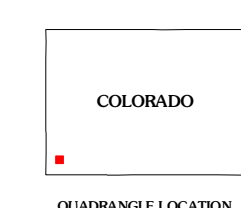
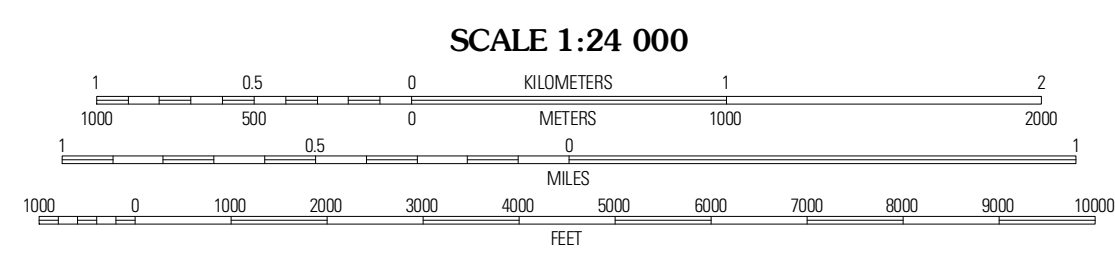
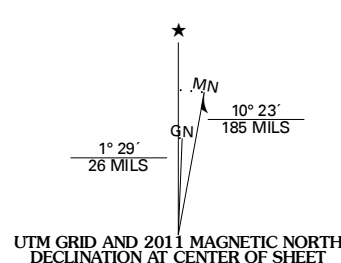
U.S. DEPARTMENT OF THE INTERIOR
U. S. GEOLOGICAL SURVEY



DOLORES WEST QUADRANGLE
COLORADO
7.5-MINUTE SERIES



Produced by the United States Geological Survey
North American Datum of 1983 (NAD83)
World Geodetic System of 1984 (WGS84). Projection and
1 000-meter grid: Universal Transverse Mercator, Zone 12S
10 000-foot ticks: Colorado Coordinate System of 1983
(south zone)



QUADRANGLE LOCATION

Yellow Jacket	Timble Point	Boggy Draw
Arritola	Dolores West	Dolores East
Mad Creek	Cortez	Point Lookout

Check with local Forest Service unit for current travel conditions and restrictions.

DOLORES WEST, CO
2011

Imagery: NAD, June 2009
Roads: ©2006-2010 Tele Atlas
Roads within US Forest Service Lands: FSTopo Data with limited Forest Service updates, 2009
Names: GNS, 2010
Hydrography: National Hydrography Dataset, 2009
Contours: National Elevation Dataset, 2005

U.S. National Grid
100,000m Square ID
Y6
Grid Zone Designation
12S

CONTOUR INTERVAL 20 FEET
NORTH AMERICAN VERTICAL DATUM OF 1988
This map was produced to conform with version 0.5.10 of the draft USGS Standards for 7.5-Minute Quadrangle Maps. A metadata file associated with this product is draft version 0.5.12

ADJOINING 7.5 QUADRANGLES