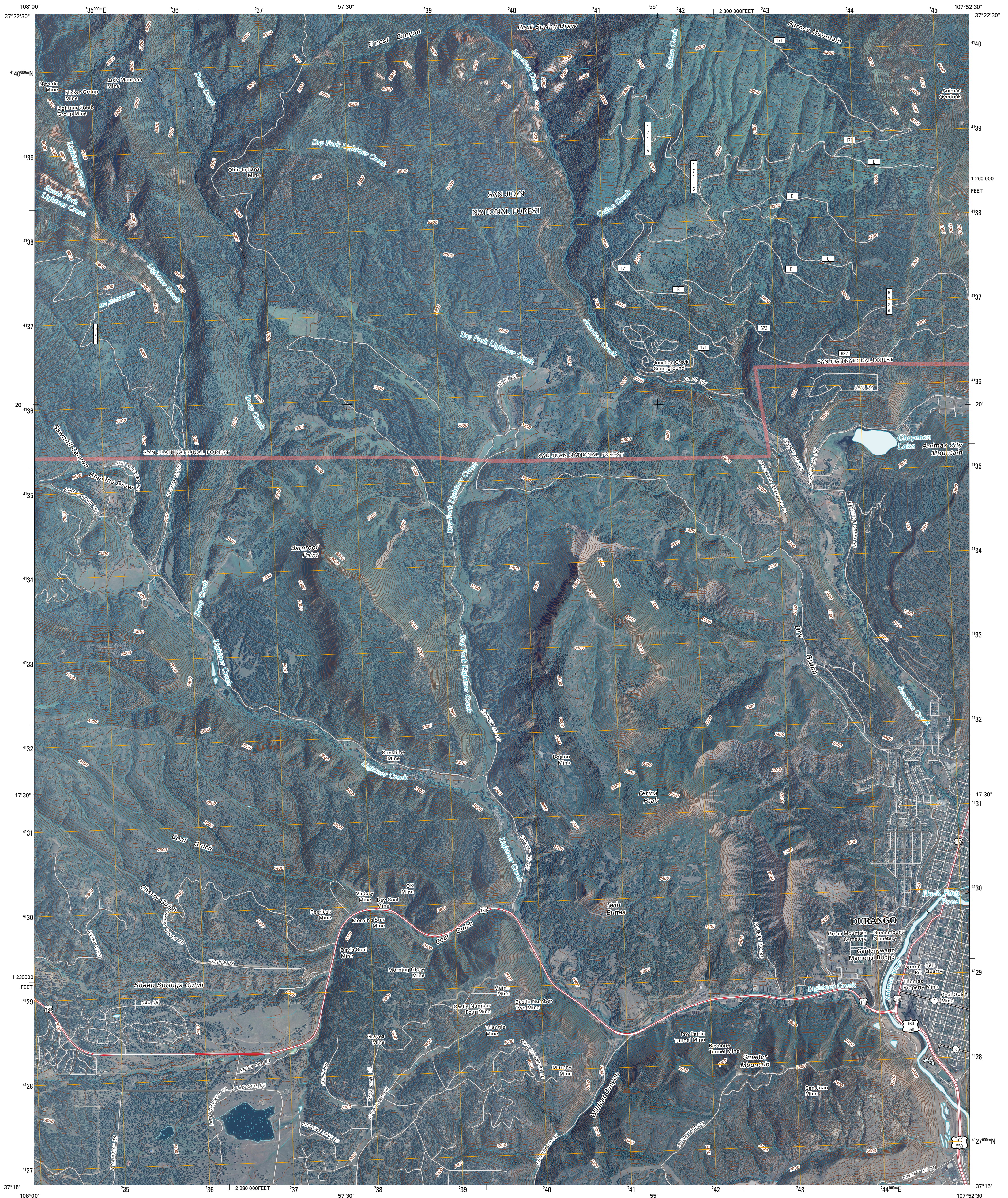




U.S. DEPARTMENT OF THE INTERIOR
U. S. GEOLOGICAL SURVEY

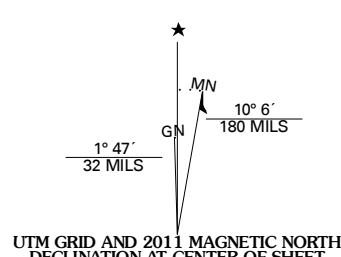


DURANGO WEST QUADRANGLE
COLORADO
7.5-MINUTE SERIES

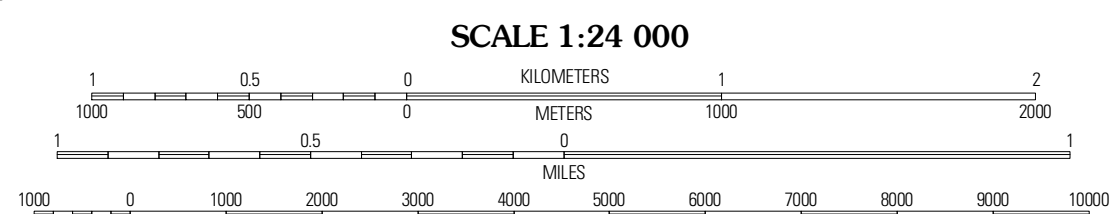


Produced by the United States Geological Survey
North American Datum of 1983 (NAD83)
World Geodetic System of 1984 (WGS84). Projection and
1 000-meter grid: Universal Transverse Mercator, Zone 13S
10 000-foot ticks: Colorado Coordinate System of 1983
(south zone)

Imagery.....NAIP, July 2009
Roads.....©2006-2010 Tele Atlas
Roads within US Forest Service Lands.....FS Topo Data
with limited Forest Service updates, 2009
Names.....GNIS, 2009
Hydrography.....National Hydrography Dataset, 2009
Contours.....National Elevation Dataset, 2004



| | |
|-----------------------|-----------------------|
| U.S. National Grid | 100,000 Square Meters |
| 88 | |
| Grid Zone Designation | 13S |



CONTOUR INTERVAL 40 FEET
NORTH AMERICAN VERTICAL DATUM OF 1988

This map was produced to conform with version 0.5.10 of the
draft USGS Standards for 7.5-Minute Quadrangle Maps.
A metadata file associated with this product is draft version 0.5.13

COLORADO

| | | |
|----------|----------------|--------------|
| La Plata | Monument Hill | Hermosa |
| Hesperus | Durango West | Durango East |
| Kline | Baden Mountain | Loma Linda |

ADJOINING 7.5' QUADRANGLES

ROAD CLASSIFICATION

| | | | |
|------------------|------------------|--------------------|-------------------------|
| Interstate Route | State Route | Local Road | 4WD |
| US Route | US Route | FS Passenger Route | FS High Clearance Route |
| Ramp | Interstate Route | US Route | FS Passenger Route |

Check with local Forest Service unit for current travel conditions and restrictions.

DURANGO WEST, CO
2011