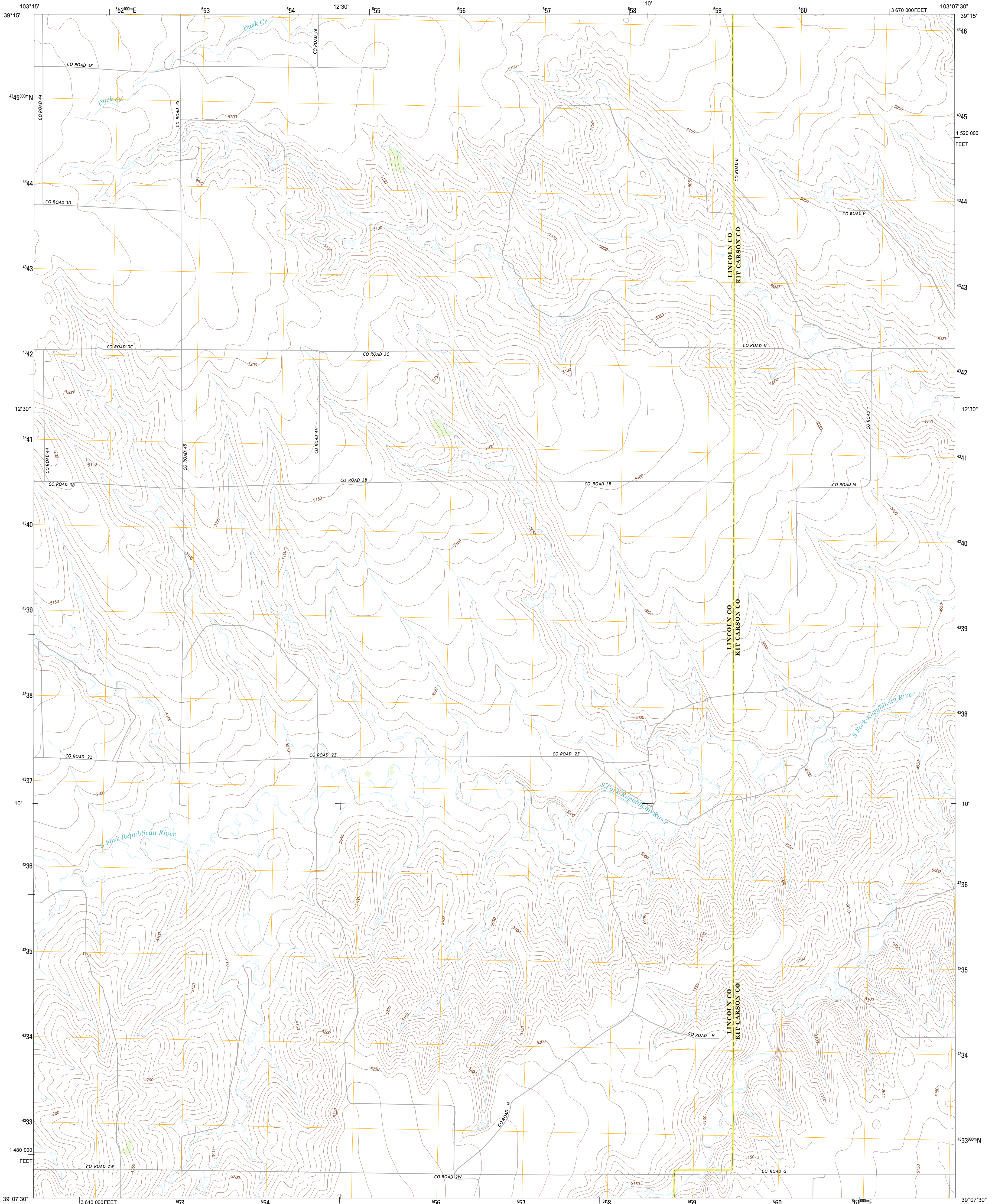




U.S. DEPARTMENT OF THE INTERIOR
U. S. GEOLOGICAL SURVEY

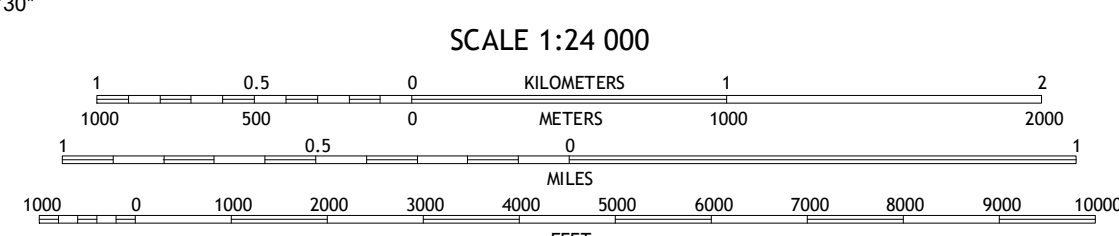
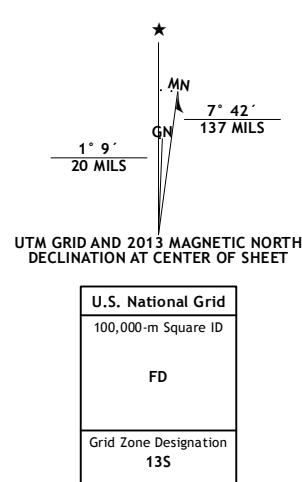


EAST OF SEVENMILE RANCH QUADRANGLE
COLORADO
7.5-MINUTE SERIES



Produced by the United States Geological Survey
North American Datum of 1983 (NAD83)
World Geodetic System of 1984 (WGS84) Projection and
1 000-meter grid: Universal Transverse Mercator, Zone 13S
10 000-foot ticks: Colorado Coordinate System of 1983 (central zone)

Imagery.....NAIP, July 2011
Roads.....C2006-2012, TomTom
Names.....GNIS, 2013
Hydrography.....National Hydrography Dataset, 2011
Contours.....National Elevation Dataset, 2007
Boundaries.....Census, BWC, USGS, 1972 - 2012
Public Land Survey System.....BLM, 2011



CONTOUR INTERVAL 10 FEET
NORTH AMERICAN VERTICAL DATUM OF 1988

This map was produced to conform with the National Geospatial Program US Topo Product Standard, 2011. A metadata file associated with this product is draft version 0.6.14

COLORADO

Arriba	Flagler SW	Flagler
Sevemille Ranch	East of Sevemille Ranch	South of Flagler
Clifford	Bledsoe Ranch	Bellyache Creek

ROAD CLASSIFICATION

Expressway Local Connector

Secondary Hwy Local Road

Ramp 4WD

Interstate Route US Route State Route

EAST OF SEVENMILE RANCH, CO
2013

ADJOINING 7.5 QUADRANGLES