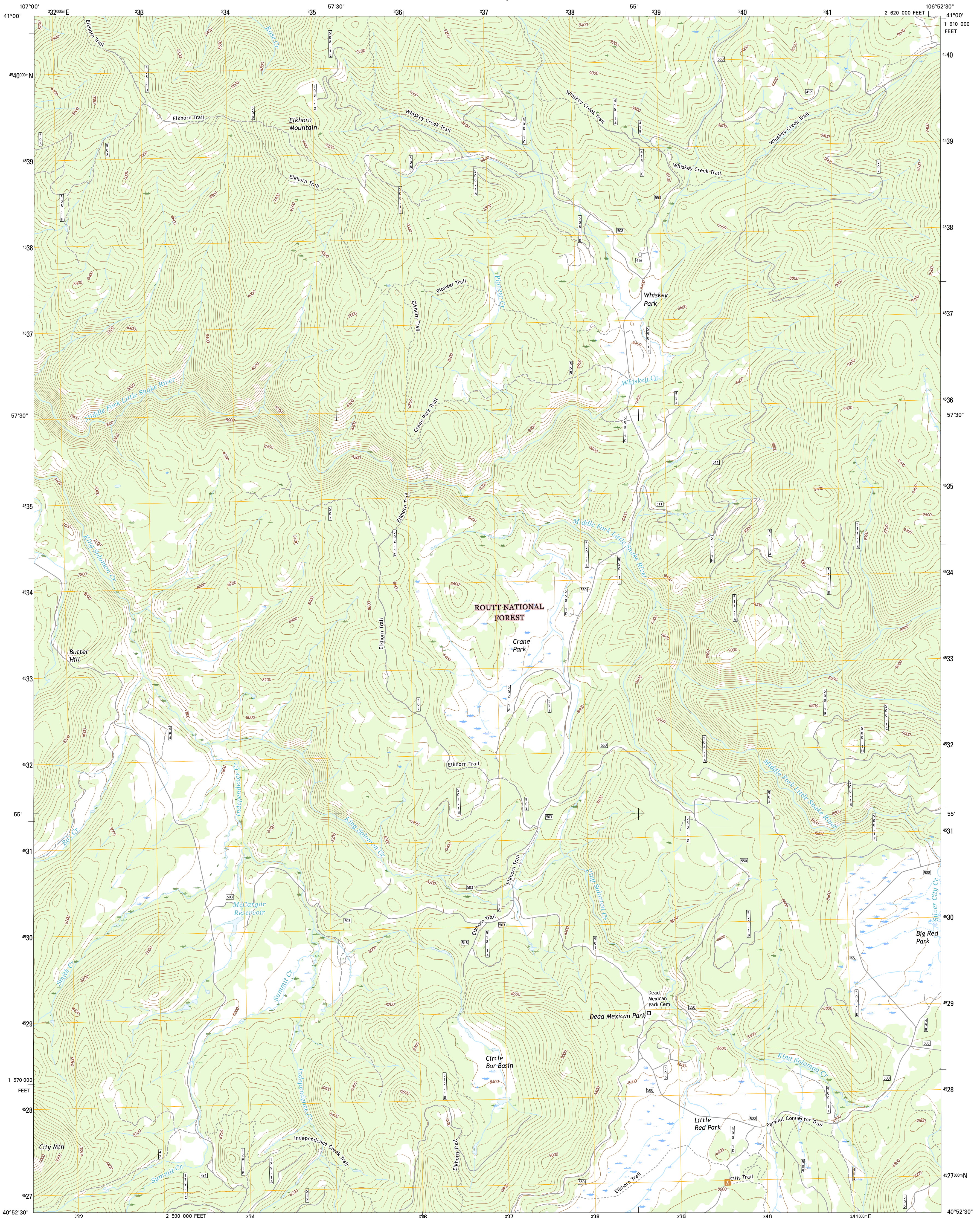




U.S. DEPARTMENT OF THE INTERIOR  
U.S. GEOLOGICAL SURVEY



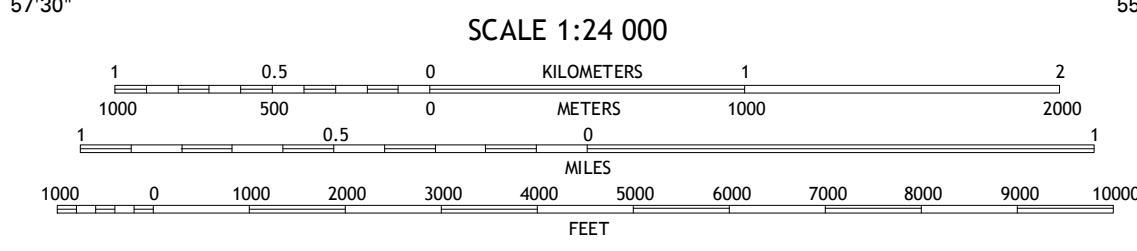
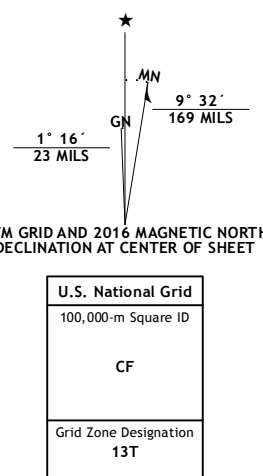
ELKHORN MOUNTAIN QUADRANGLE  
COLORADO-ROUTT CO.  
7.5-MINUTE SERIES



Produced by the United States Geological Survey  
North American Datum of 1983 (NAD83)  
World Geodetic System of 1984 (WGS84). Projection and  
1 000-meter grid: Universal Transverse Mercator, Zone 13T  
10 000-foot ticks: Colorado Coordinate System of 1983 (north  
zone)

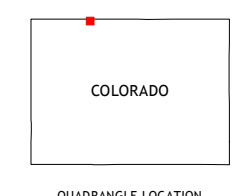
This map is not a legal document. Boundaries may be  
generalized for this map scale. Private lands within government  
reservations may not be shown. Obtain permission before  
entering private lands.

Imagery: N.A.I.P., July 2013  
Roads: U.S. Census Bureau, 2015-2016  
Roads within US Forest Service Lands: FSTopo Data  
with limited Forest Service updates, 2012-2016  
Names: National Hydrography Dataset, 2015  
Hydrography: National Hydrography Dataset, 2015  
Contours: National Elevation Dataset, 2004  
Boundaries: Multiple sources; see metadata file 1972-2016  
Public Land Survey System: BLM, 2011  
Wetlands: FWS National Wetlands Inventory 1977-2014



CONTOUR INTERVAL 40 FEET  
NORTH AMERICAN VERTICAL DATUM OF 1988

This map was produced to conform with the  
National Geospatial Program US Topo Product Standard, 2011.  
A metadata file associated with this product is draft version 0.6.19



ROAD CLASSIFICATION

Expressway	Local Connector
Secondary Hwy	Local Road
Ramp	4WD
Interstate Route	US Route
FS Primary Route	FS Passenger Route
	State Route
	FS High Clearance Route

Check with local Forest Service unit  
for current travel conditions and restrictions.

1 Fletcher Peak
2 Solomon Creek
3 Dudley Creek
4 Shield Mountain
5 West Fork Lake
6 Meaden Peak
7 Hahns Peak
8 Farwell Mountain

ELKHORN MOUNTAIN, CO  
2016

