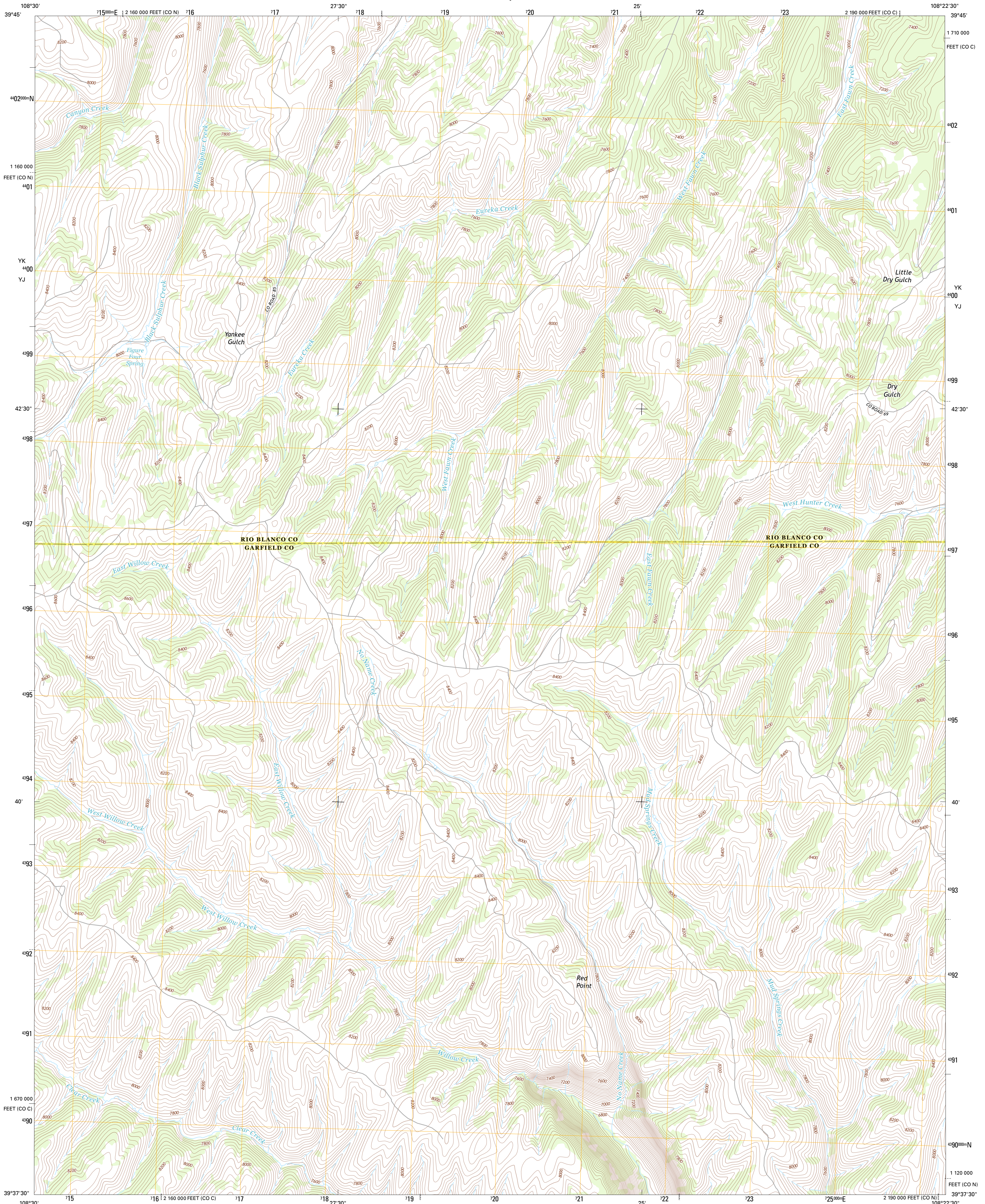




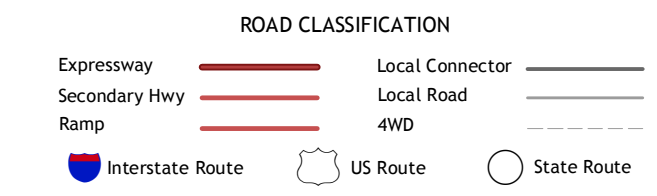
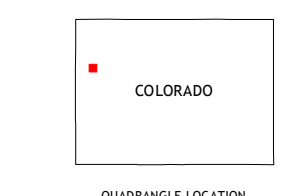
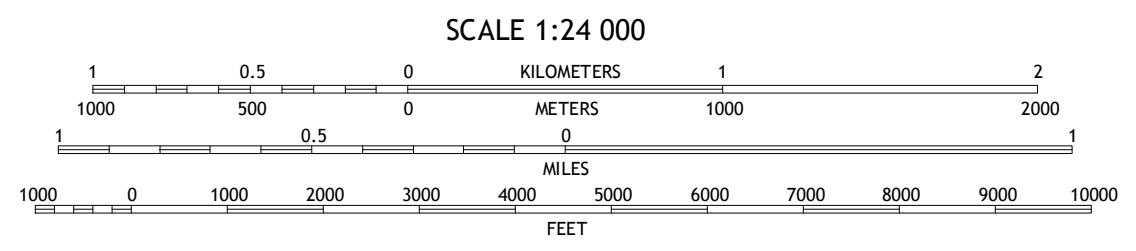
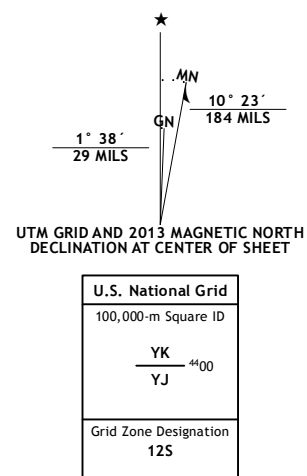
U.S. DEPARTMENT OF THE INTERIOR
U. S. GEOLOGICAL SURVEY



FIGURE FOUR SPRING QUADRANGLE
COLORADO
7.5-MINUTE SERIES



Produced by the United States Geological Survey
North American Datum of 1983 (NAD83)
World Geodetic System of 1984 (WGS84). Projection and
1 000-meter grid: Universal Transverse Mercator, Zone 12S
10 000-foot ticks: Colorado Coordinate System of 1983 (central
and north zones)



QUADRANGLE LOCATION

Black Cabin Gulch	Yankee Gulch	Rock School
Razorback Ridge	Figure Four Spring	Bull Fork
Henderson Ridge	Desert Gulch	Mount Blaine

Imagery.....NAIP, July 2011
Roads.....©2006-2012 TomTom
Names.....GNIS, 2013
Hydrography.....National Hydrography Dataset, 2011
Contours.....National Elevation Dataset, 2006
Boundaries.....IRWC, IBC, USGS, 1972 - 2012
Public Land Survey System.....BLM, 2011

CONTOUR INTERVAL 40 FEET
NORTH AMERICAN VERTICAL DATUM OF 1988
This map was produced to conform with the
National Geospatial Program US Topo Product Standard, 2011.
A metadata file associated with this product is draft version 0.6.14

FIGURE FOUR SPRING, CO
2013

ADJOINING 7.5 QUADRANGLES