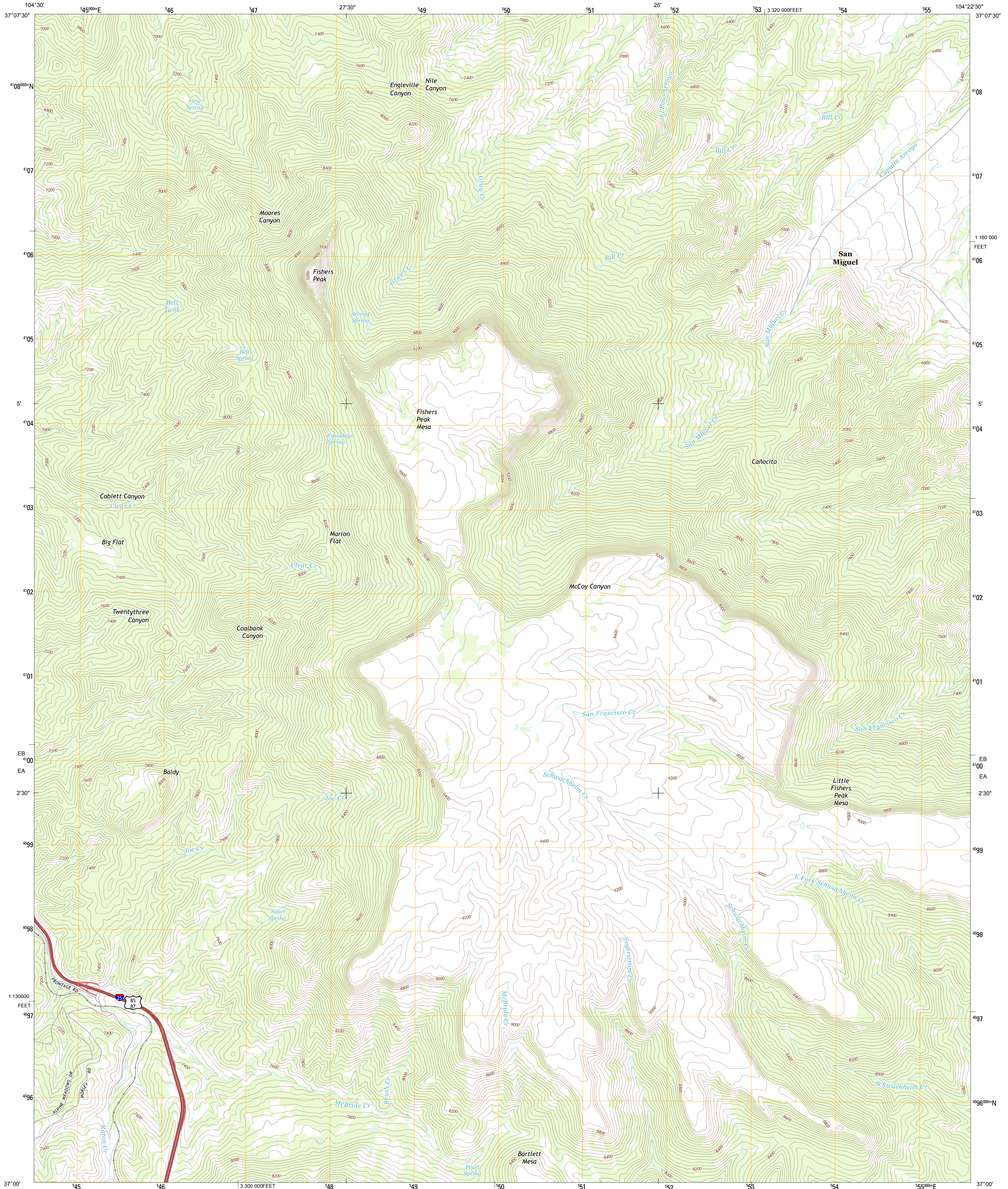




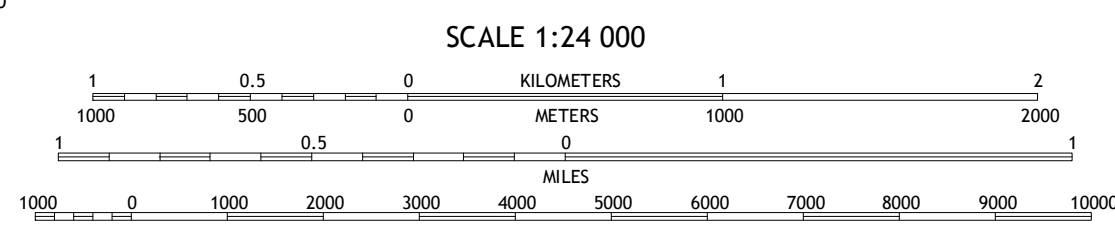
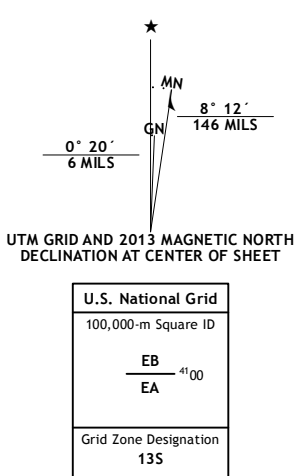
U.S. DEPARTMENT OF THE INTERIOR
U. S. GEOLOGICAL SURVEY



FISHERS PEAK QUADRANGLE
COLORADO-LAS ANIMAS CO.
7.5-MINUTE SERIES

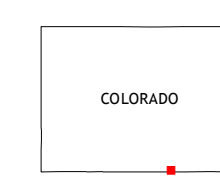


Produced by the United States Geological Survey
North American Datum of 1983 (NAD83)
World Geodetic System of 1984 (WGS84). Projection and
1 000-meter grid: Universal Transverse Mercator, Zone 13S
10 000-foot ticks: Colorado Coordinate System of 1983 (south
zone)



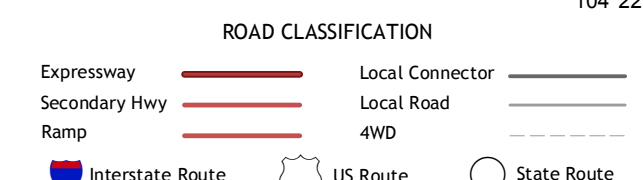
CONTOUR INTERVAL 40 FEET
NORTH AMERICAN VERTICAL DATUM OF 1988

This map was produced to conform with the
National Geospatial Program US Topo Product Standard, 2011.
A metadata file associated with this product is draft version 0.6.14



QUADRANGLE LOCATION

| | | |
|----------------|---------------|--------------|
| Trinidad West | Trinidad East | Mooney Hills |
| Starkville | Fishers Peak | Barella |
| Tin Pan Canyon | Raton | Yankee |



FISHERS PEAK, CO
2013

ADJOINING 7.5 QUADRANGLES