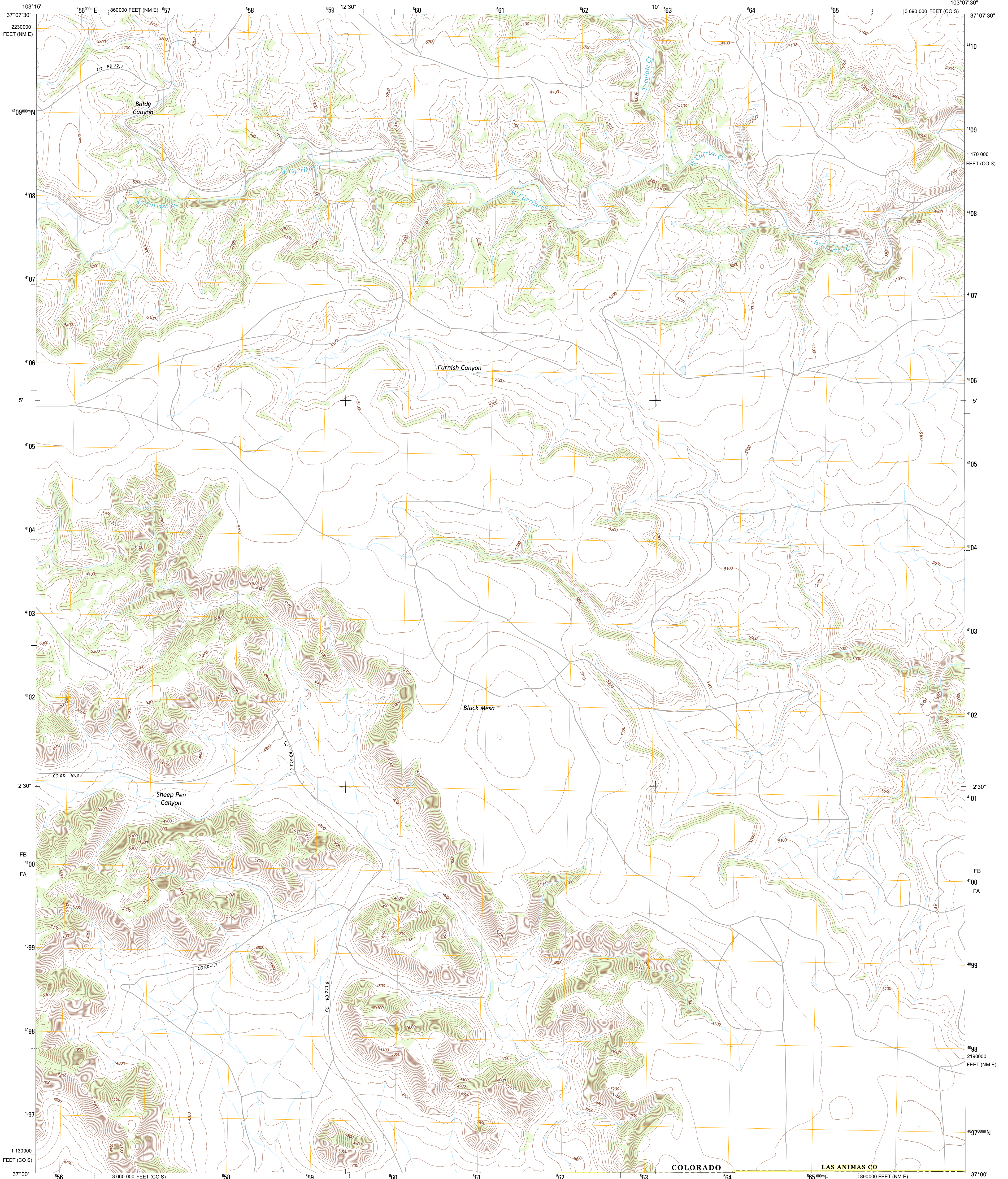




U.S. DEPARTMENT OF THE INTERIOR  
U. S. GEOLOGICAL SURVEY

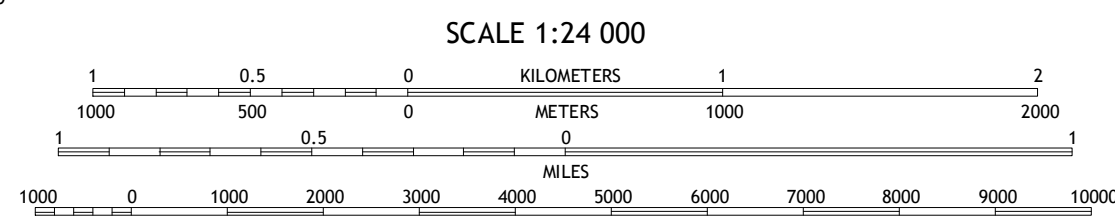
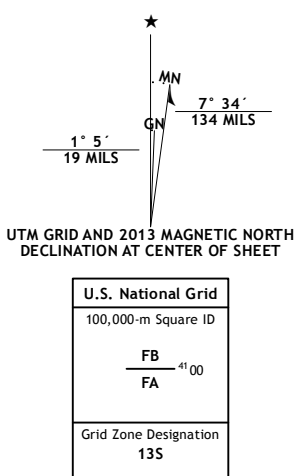


FURNISH CANYON WEST QUADRANGLE  
COLORADO-NEW MEXICO  
7.5-MINUTE SERIES

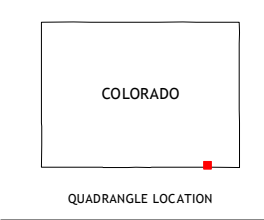


Produced by the United States Geological Survey  
North American Datum of 1983 (NAD83)  
World Geodetic System of 1984 (WGS84). Projection and  
1 000-meter grid: Universal Transverse Mercator, Zone 13S  
10 000-foot ticks: Colorado Coordinate System of 1983 (south  
zone), New Mexico Coordinate System of 1983 (east zone)

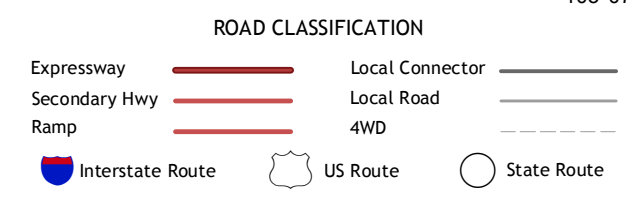
Imagery.....N.A.I.P., July 2011  
Roads.....©2006-2012, TomTom  
Names.....©2006-2012, TomTom  
Hydrography.....National Hydrography Dataset, 2011  
Contours.....National Elevation Dataset, 2005  
Boundaries, IRW, etc., USGS, 1972-2012  
Public Land Survey System.....BLM, 2011



CONTOUR INTERVAL 20 FEET  
NORTH AMERICAN VERTICAL DATUM OF 1988  
This map was produced to conform with the  
National Geospatial Program US Topo Product Standard, 2011.  
A metadata file associated with this product is draft version 0.6.14



| QUADRANGLE LOCATION |                     |                     |
|---------------------|---------------------|---------------------|
| Kim South           | Pintada Creek       | Carrizo Mountain    |
| Dennis Canyon       | Furnish Canyon West | Furnish Canyon East |
| Tub Spring          | Wedding Cake Butte  | Goodson School      |



FURNISH CANYON WEST, CO-NM  
2013

ADJOINING 7.5 QUADRANGLES