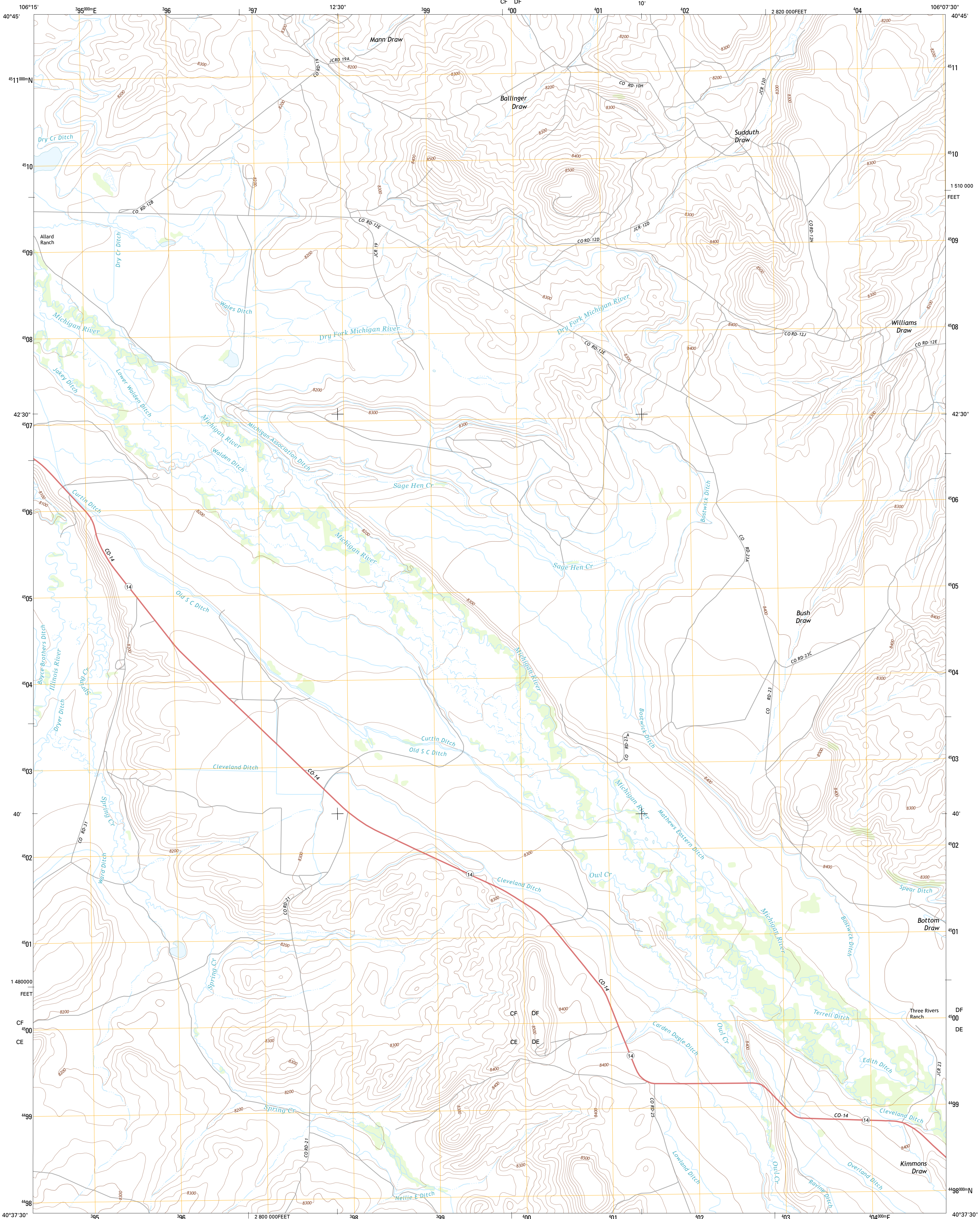




U.S. DEPARTMENT OF THE INTERIOR
U. S. GEOLOGICAL SURVEY

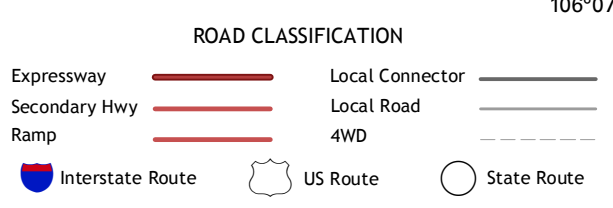
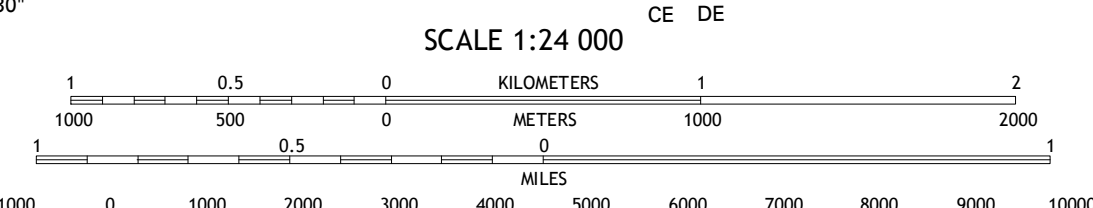
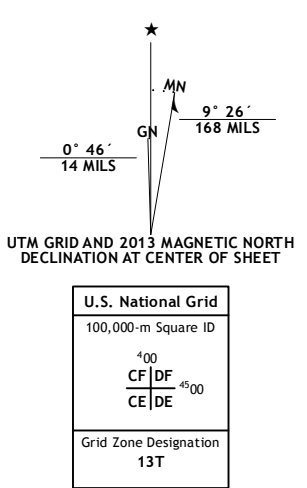


GOULD NW QUADRANGLE
COLORADO-JACKSON CO.
7.5-MINUTE SERIES



Produced by the United States Geological Survey
North American Datum of 1983 (NAD83)
World Geodetic System of 1994 (WGS84) Projection and
1 000-meter grid: Universal Transverse Mercator, Zone 13T
10 000-foot ticks: Colorado Coordinate System of 1983 (north zone)

Imagery.....NAIP, July 2011
Roads.....©2006-2012 TomTom
Names.....©2013
Hydrography.....National Hydrography Dataset, 2011
Contours.....National Elevation Dataset, 2005
Boundaries.....Census, BVC, IBC, USGS, 1972-2012
Public Land Survey System.....BLM, 2011



Cowdrey	Eagle Hill	Shipman Mountain
Walden	Gould NW	Johnny Moore Mountain
MacFarlane Reservoir	Owl Ridge	Gould

GOULD NW, CO
2013

CONTOUR INTERVAL 20 FEET
NORTH AMERICAN VERTICAL DATUM OF 1988

This map was produced to conform with the National Geospatial Program US Topo Product Standard, 2011. A metadata file associated with this product is draft version 0.6.14