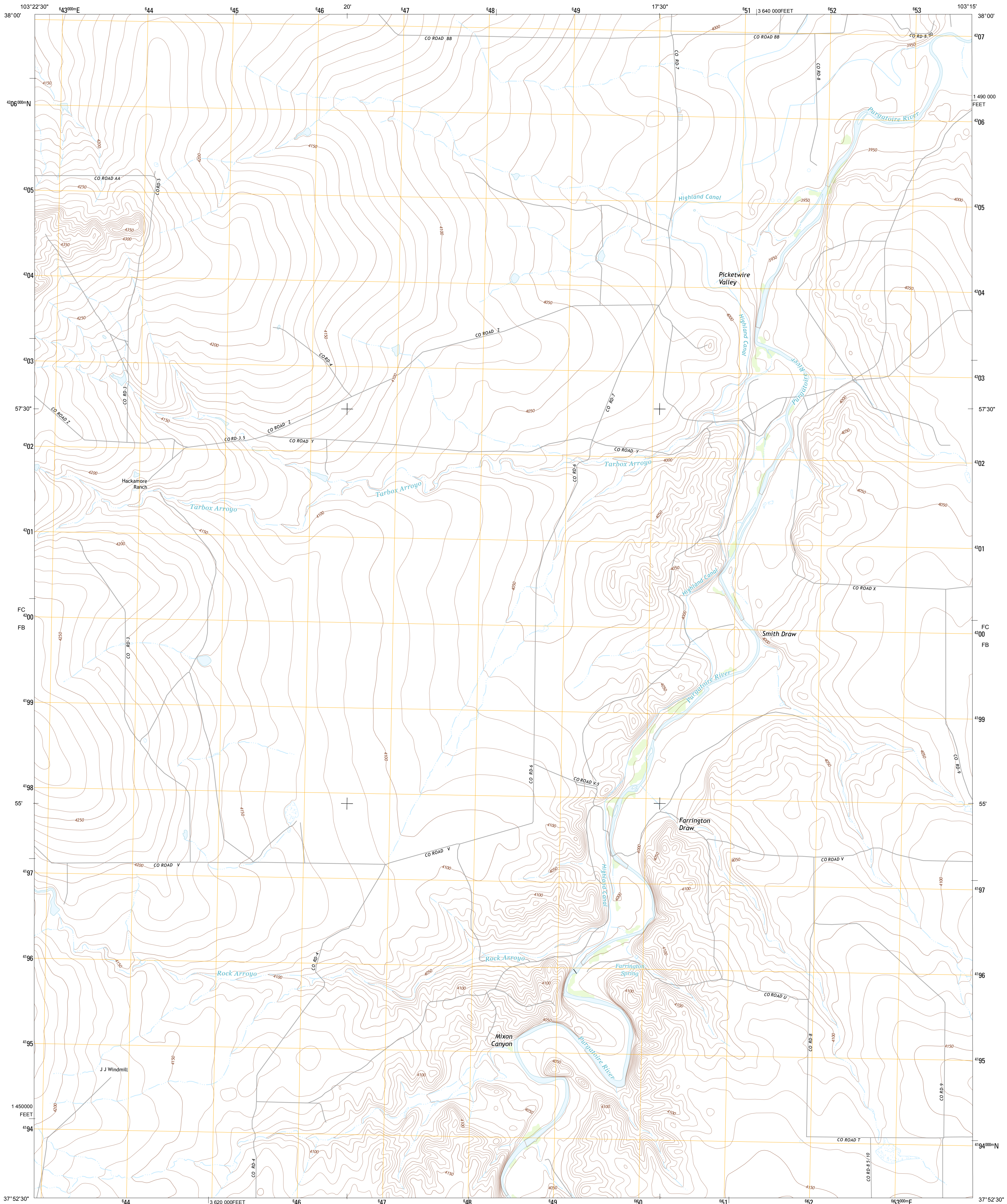




U.S. DEPARTMENT OF THE INTERIOR
U. S. GEOLOGICAL SURVEY

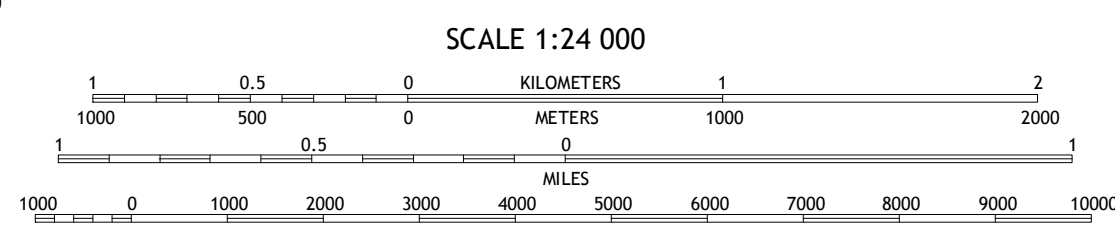
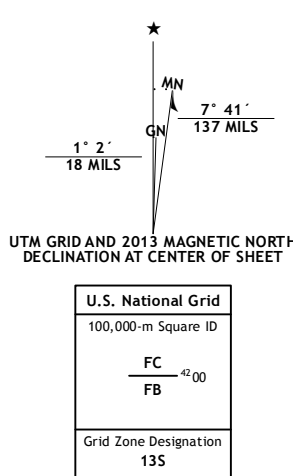


HACKMORE RANCH QUADRANGLE
COLORADO-BENT CO.
7.5-MINUTE SERIES

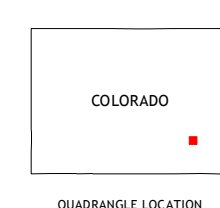


Produced by the United States Geological Survey
North American Datum of 1983 (NAD83)
World Geodetic System of 1984 (WGS84) Projection and
1 000-meter grid: Universal Transverse Mercator, Zone 13S
10 000-foot ticks: Colorado Coordinate System of 1983 (south zone)

Imagery.....NAIP, July 2011
Roads.....©2006-2012 TomTom
Names.....GNIS, 2013
Hydrography.....National Hydrography Dataset, 2011
Contours.....National Elevation Dataset, 2007
Boundaries.....Census, IBC, USGS, 1972-2012
Public Land Survey System.....BLM, 2011

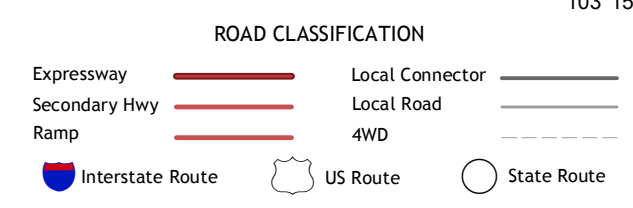


CONTOUR INTERVAL 10 FEET
NORTH AMERICAN VERTICAL DATUM OF 1988
This map was produced to conform with the
National Geospatial Program US Topo Product Standard, 2011.
A metadata file associated with this product is draft version 0.6.14



QUADRANGLE LOCATION

Hedley	Cornelia	Las Animas
Thompson Arroyo	Hackmore Ranch	Gilpin
Higbee	Turkey Canyon	Toonerville



HACKMORE RANCH, CO
2013

ADJOINING 7.5 QUADRANGLES