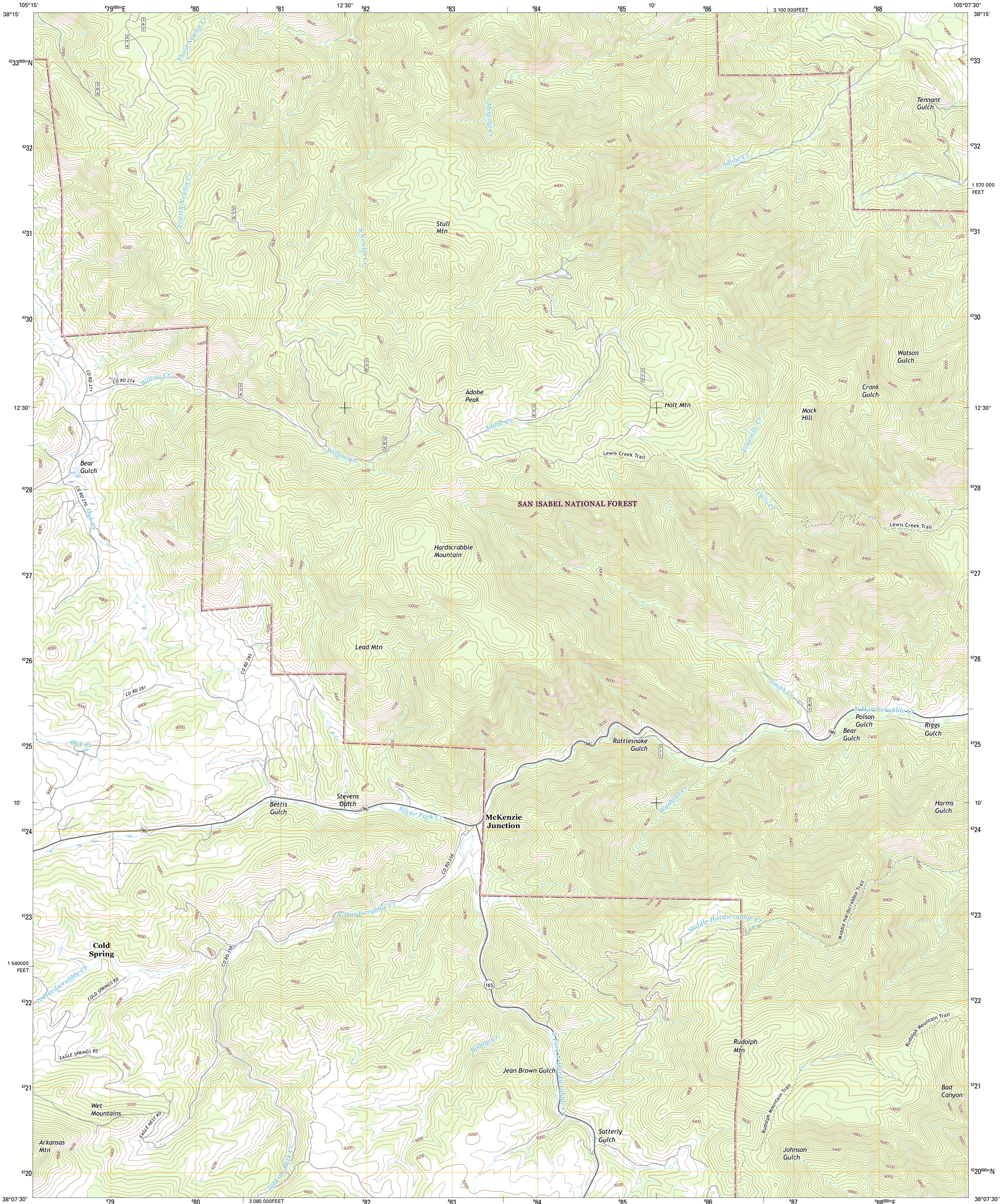




U.S. DEPARTMENT OF THE INTERIOR
U.S. GEOLOGICAL SURVEY



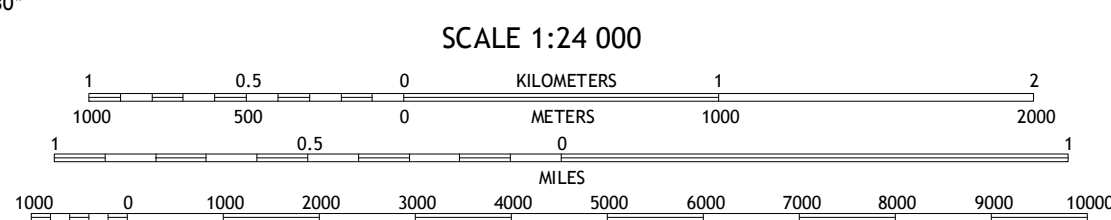
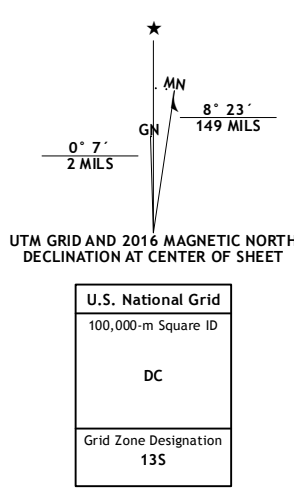
HARDSCRABBLE MOUNTAIN QUADRANGLE
COLORADO-CUSTER CO.
7.5-MINUTE SERIES



Produced by the United States Geological Survey
North American Datum of 1983 (NAD83)
World Geodetic System of 1984 (WGS84) Projection and
1 000-meter grid: Universal Transverse Mercator, Zone 13S
10 000-foot ticks: Colorado Coordinate System of 1983 (south zone)

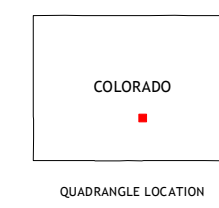
This map is not a legal document. Boundaries may be generalized for this map scale. Private lands within government reservations may not be shown. Obtain permission before entering private lands.

Image: NAIP, September 2013
Roads: U.S. Census Bureau, 2015
Roads within US Forest Service Lands: FSTopo Data with limited Forest Service updates, 2012 - 2016
Names: GNIS, 2016
Hydrography: National Hydrography Dataset, 2013
Contours: National Elevation Dataset, 2008
Boundaries: Multiple sources; see metadata file 1972 - 2016
Public Land Survey System: BLM, 2011
Wetlands: FWS National Wetlands Inventory 1977 - 2014



CONTOUR INTERVAL 40 FEET
NORTH AMERICAN VERTICAL DATUM OF 1988

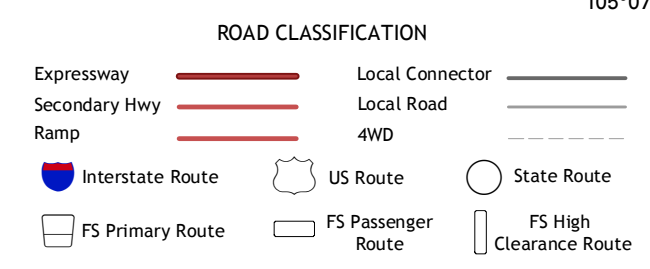
This map was produced to conform with the National Geospatial Program US Topo Product Standard, 2011. A metadata file associated with this product is draft version 0.6.19



ADJACENT QUADRANGLES

1	2	3
4	5	6
7	8	9

1 Curley Peak
2 Rockvale
3 Florence SE
4 Mount Tyndall
5 Wetmore
6 Rosita
7 Deer Peak
8 Saint Charles Peak



Check with local Forest Service unit for current travel conditions and restrictions.

HARDSCRABBLE MOUNTAIN, CO
2016

