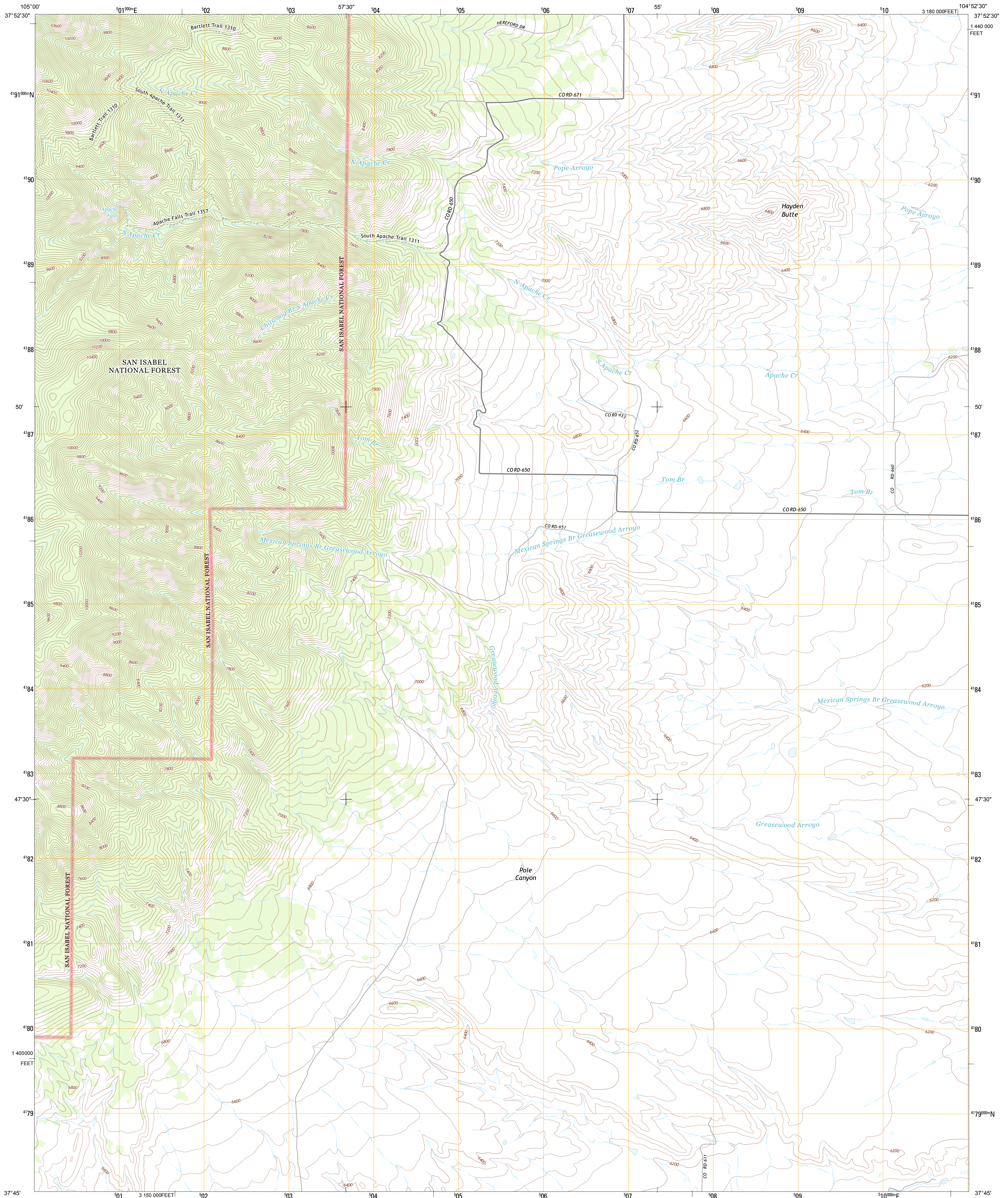




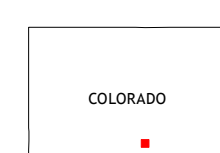
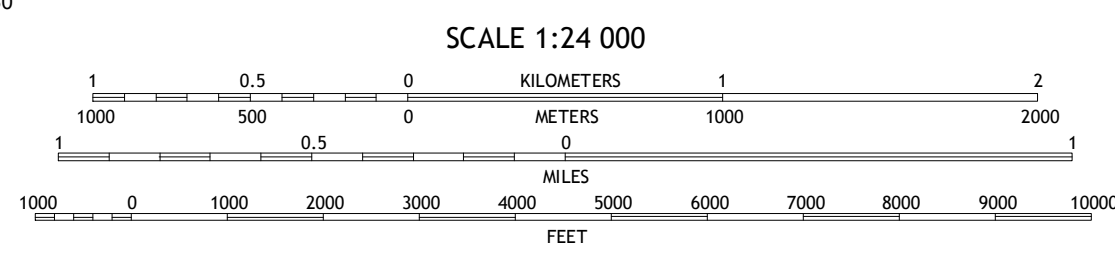
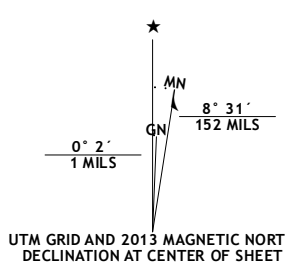
U.S. DEPARTMENT OF THE INTERIOR  
U. S. GEOLOGICAL SURVEY



HAYDEN BUTTE QUADRANGLE  
COLORADO-HUERFANO CO.  
7.5-MINUTE SERIES



Produced by the United States Geological Survey  
North American Datum of 1983 (NAD83)  
World Geodetic System of 1984 (WGS84) Projection and  
1 000-meter grid: Universal Transverse Mercator, Zone 13S  
10 000-foot ticks: Colorado Coordinate System of 1983 (south zone)



**ROAD CLASSIFICATION**

Expressway	Local Connector
Secondary Hwy	Local Road
Ramp	4WD
Interstate Route	US Route
FS Primary Route	FS Passenger Route
	FS High Clearance Route

Check with local Forest Service unit for current travel conditions and restrictions.

**QUADRANGLE LOCATION**

San Isabel	Rye	Colorado City
Badito Cone	Hayden Butte	Huerfano Butte
Fairlita	Black Hills	Walsenburg North

Imagery.....NAIP, August 2011  
Roads.....2006-2012 TomTom  
Roads within US Forest Service Lands.....FS Topo Data with limited Forest Service updates, 2013  
Names.....GNIS, 2013  
Hydrography.....National Hydrography Dataset, 2011  
Contours.....National Elevation Dataset, 2006  
Boundaries.....Census, IBWC, IBC, USGS, 1972 - 2012  
Public Land Survey System.....BLM, 2011

**U.S. National Grid**  
100,000-Square ID

EB
----

Grid Zone Designation 13S

CONTOUR INTERVAL 40 FEET  
NORTH AMERICAN VERTICAL DATUM OF 1988  
This map was produced to conform with the National Geospatial Program US Topo Product Standard, 2011. A metadata file associated with this product is draft version 0.6.14

**HAYDEN BUTTE, CO**  
2013

ADJOINING 7.5 QUADRANGLES