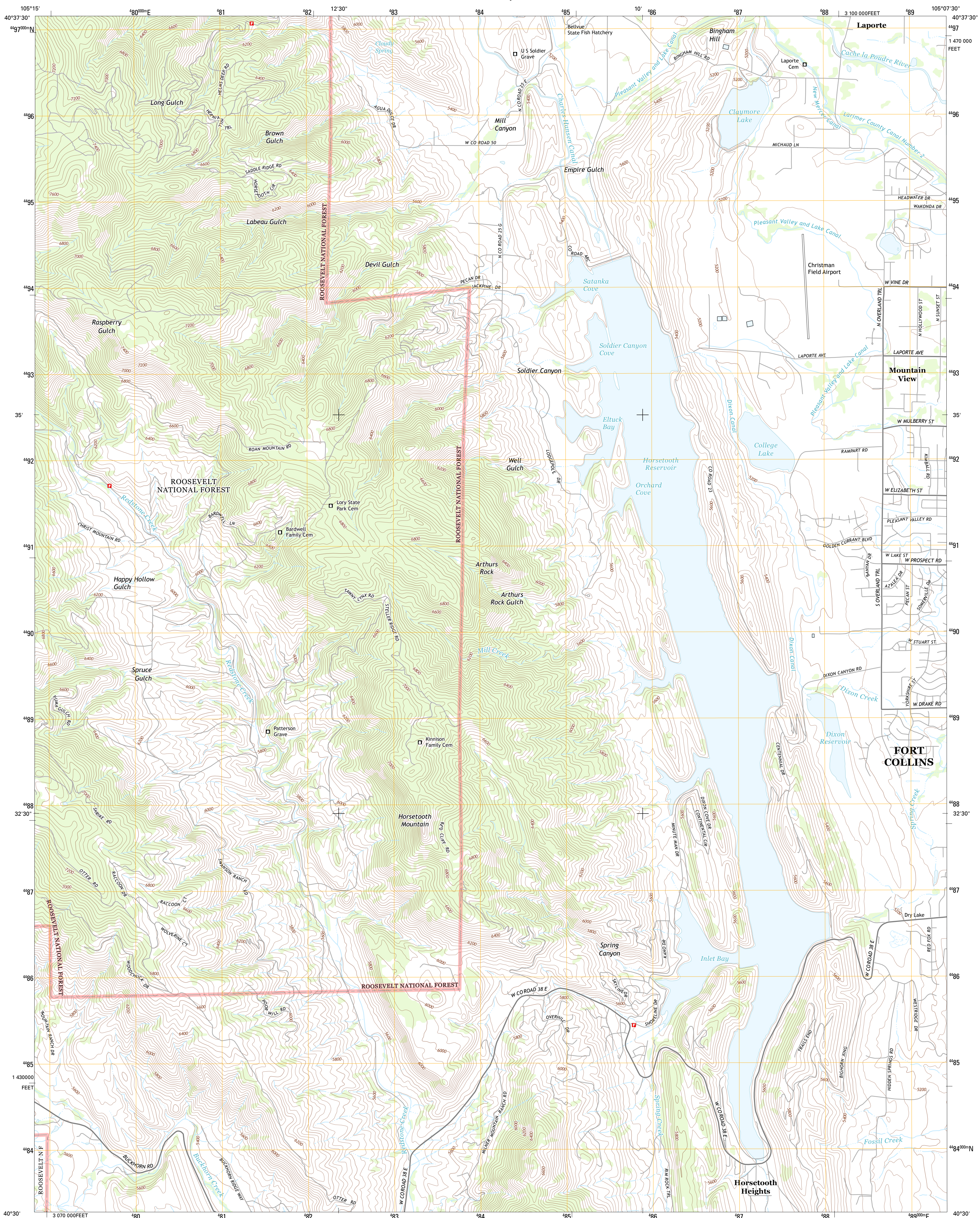




U.S. DEPARTMENT OF THE INTERIOR
U. S. GEOLOGICAL SURVEY

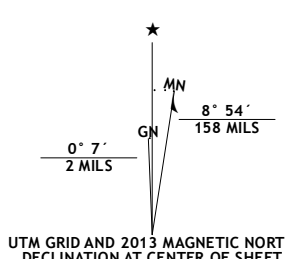


HORSETOOTH RESERVOIR QUADRANGLE
COLORADO-LARIMER CO.
7.5-MINUTE SERIES

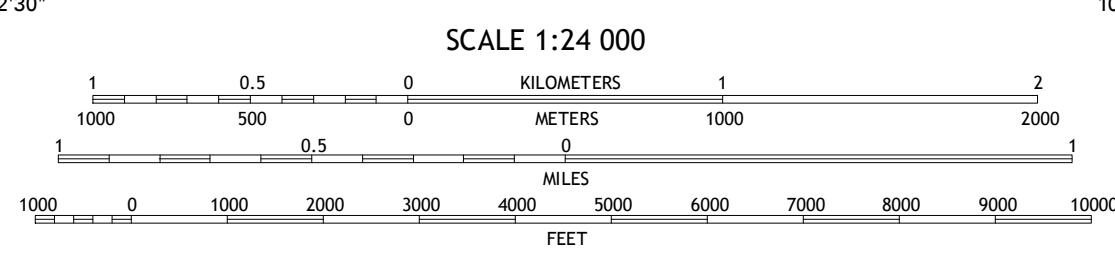


Produced by the United States Geological Survey
North American Datum of 1983 (NAD83)
World Geodetic System of 1984 (WGS84) Projection and
1 000-meter grid; Universal Transverse Mercator, Zone 13T
10 000-foot ticks: Colorado Coordinate System of 1983 (north
zone)

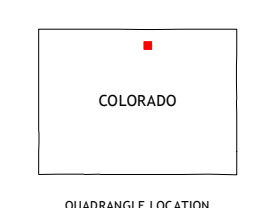
Imagery.....N.A.P., July 2011
Roads.....2006-2012, TomTom
Roads within US Forest Service Lands.....FS Topo Data
with limited Forest Service updates, 2013
Names.....GNIS, 2013
Hydrography.....National Hydrography Dataset, 2011
Contours.....National Elevation Dataset, 2001
Boundaries.....Census, IBC, USGS, 1972 - 2012
Public Land Survey System.....BLM, 2011



U.S. National Grid	100,000-m Square ID
DE	
Grid Zone Designation	13T

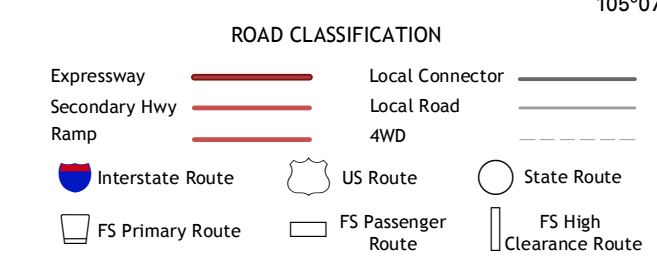


CONTOUR INTERVAL 40 FEET
NORTH AMERICAN VERTICAL DATUM OF 1988
This map was produced to conform with the
National Geospatial Program US Topo Product Standard, 2011.
A metadata file associated with this product is draft version 0.6.14



QUADRANGLE LOCATION

Poudre Park	Laporte	Wellington
Buckhorn Mountain	Horsetooth Reservoir	Fort Collins
Drake	Masonville	Loveland



Check with local Forest Service unit
for current travel conditions and restrictions.

HORSETOOTH RESERVOIR, CO
2013

ADJOINING 7.5 QUADRANGLES